

APP CRS	Rwy Ldg	3403
222°	TDZE	7
	Apt Elev	7

RNAV (GPS) RWY 22

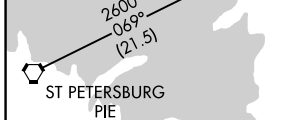
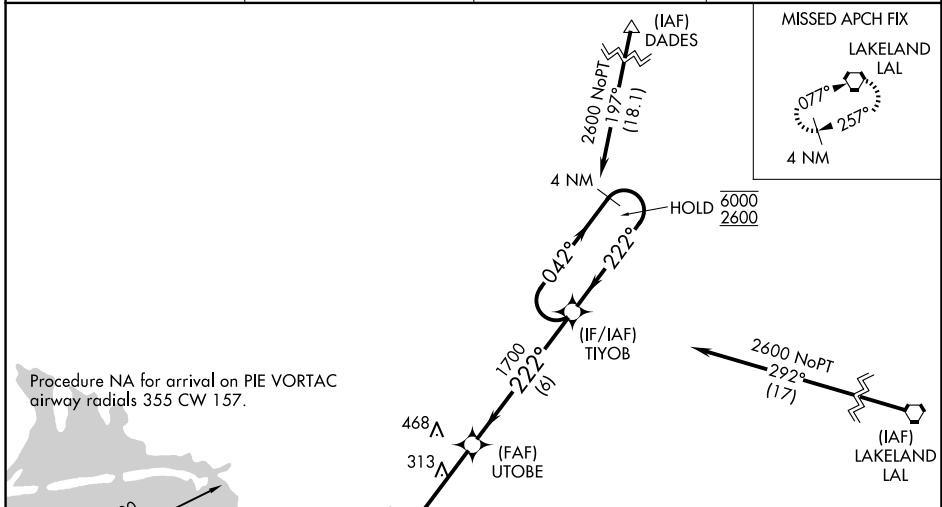
PETER O KNIGHT (TPF)

RNP APCH - GPS.

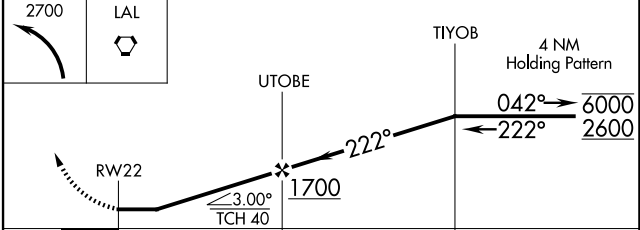
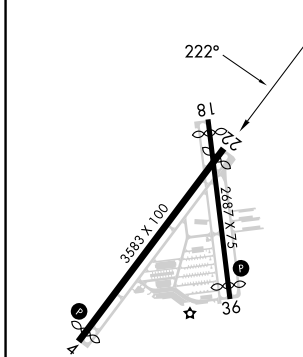
▼ Procedure NA at night. Rwy 22 helicopter visibility reduction below 1 SM NA.
 ▲ Circling NA northwest of Rwy 4-22. Circling NA to Rwy 18. When local altimeter setting not received, use TPA altimeter setting and increase all MDA 20 feet.

MISSED APPROACH: Climbing left turn to 2700 direct LAL VORTAC and hold.

AWOS-3 118.925	TAMPA APP CON 119.9 290.3	CLNC DEL 119.8	UNICOM 122.725 (CTAF) 0
--------------------------	-------------------------------------	--------------------------	--



ELEV	7	D	TDZE	7
------	----------	----------	------	----------



CATEGORY	A	B	C	D
LNAV MDA	580-1	573 (600-1)	NA	
CIRCLING	720-1	713 (800-1)	NA	

REIL Rwy 22 **0**
 MIRL Rwy 4-22 and 18-36 **0**

SE-3, 14 MAY 2026 to 11 JUN 2026

SE-3, 14 MAY 2026 to 11 JUN 2026