

TAMPA, FLORIDA

RNAV (GPS) RWY 23

APCH CRS	Rwy ldg	11,421
229°	TDZE	14
	Arprt Elev	14

AL-418 (USAF)

MACDILL AFB (KMCF)

RNP APCH

ALS-1

MISSED APPROACH: Climb to 1600, then climbing left turn to 1600 direct MILNE and hold.

* When ALS inop, increase vis to 1 1/4 miles.
 ** When ALS inop, increase CAT AB RVR to 55, vis to 1 mile; CAT CDE vis to 1 1/4 miles.

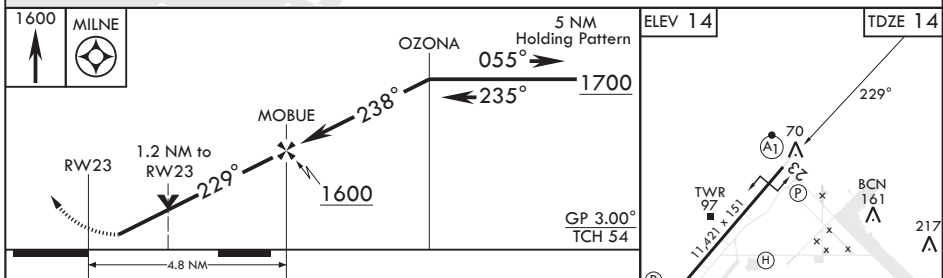
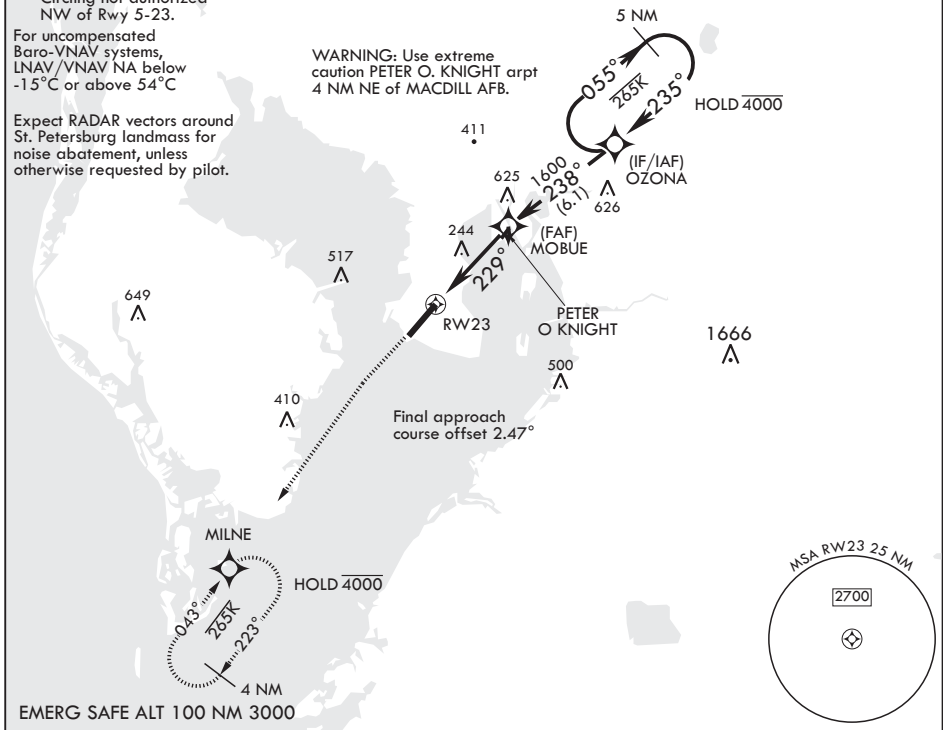
ATIS 133.825 270.1	TAMPA APP CON 124.95 354.0	TOWER 120.175 294.7	GND CON 118.575 275.8
------------------------------	--------------------------------------	-------------------------------	---------------------------------

*** Circling not authorized NW of Rwy 5-23.

For uncompensated Baro-VNAV systems, LNAV/VNAV NA below -15°C or above 54°C

Expect RADAR vectors around St. Petersburg landmass for noise abatement, unless otherwise requested by pilot.

WARNING: Use extreme caution PETER O. KNIGHT arprt 4 NM NE of MACDILL AFB.



CATEGORY	A	B	C	D	E
LNAV/VNAV DA*	440/40		426	(500-¾)	
LNAV MDA**	440/24	426 (500-½)	440/40	426	(500-¾)
CIRCLING***	500-1 486 (500-1)	540-1 526 (600-1)	540-1½ 526 (600-1½)	580-2 566 (600-2)	1020-3 1006 (1100-3)

HIRL all Rwys

TAMPA, FLORIDA
Amdt 2 10AUG23

27°51'N - 82°31'W

MACDILL AFB (KMCF)

RNAV (GPS) RWY 23

SE-3, 14 MAY 2026 to 11 JUN 2026

SE-3, 14 MAY 2026 to 11 JUN 2026