

TAMPA, FLORIDA

# RNAV (GPS) RWY 5

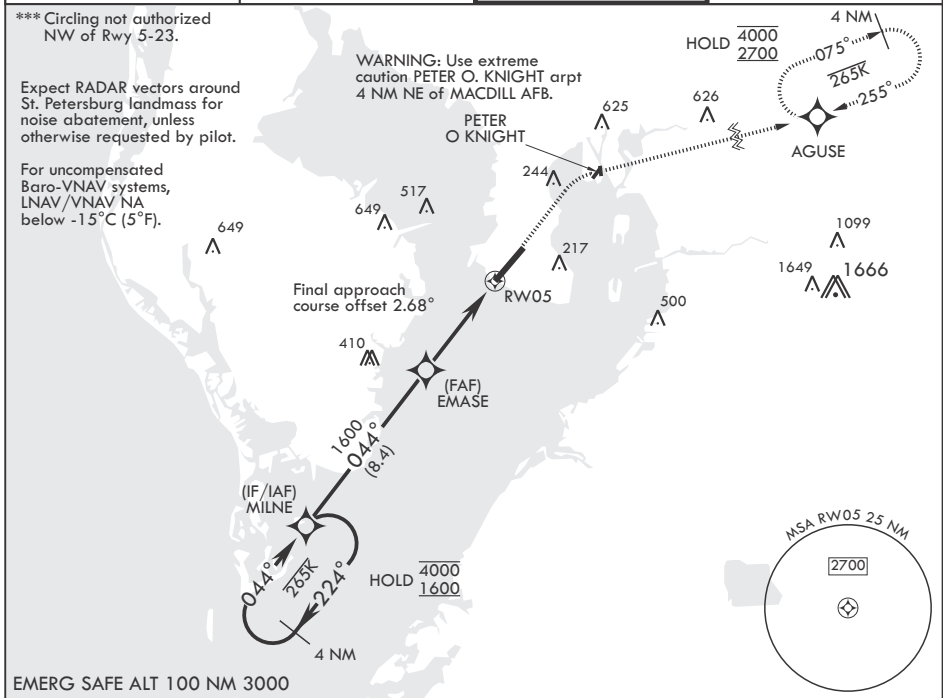
APCH CRS <b>044°</b>	Rwy Idg TDZE Arpt Elev	<b>11,421</b> <b>10</b> <b>14</b>
-------------------------	------------------------------	---

- (USAF)

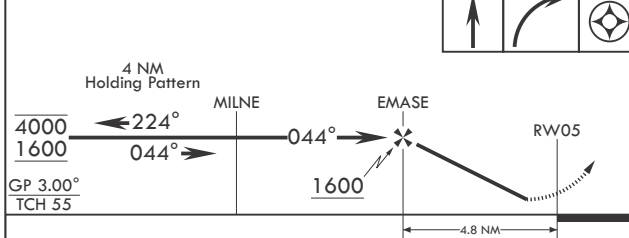
MACDILL AFB (KMCF)

RNP APCH	ALSF-1	MISSED APPROACH: Climb to 1700 then climbing right turn to 2700 direct AGUSE and hold.
<p>* When ALS inop, increase CAT AB RVR to 40, vis to 3/4 mile; CAT CDE RVR to 45, vis to 7/8 mile.                  ** When ALS inop, increase CAT AB RVR to 55, vis to 1 mile, CAT CDE RVR to 60, vis to 1 1/8 miles.</p>		

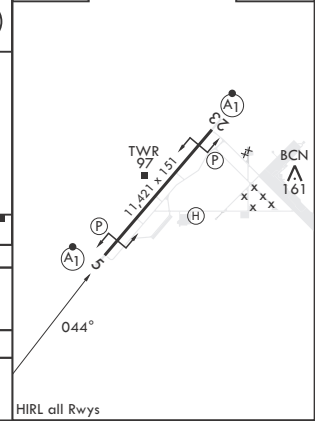
ATIS <b>133.825 270.1</b>	TAMPA APP CON <b>124.95 354.0</b>	TOWER <b>120.175 294.7</b>	GND CON <b>118.575 275.8</b>
------------------------------	--------------------------------------	-------------------------------	---------------------------------



EMERG SAFE ALT 100 NM 3000	1700	2700	AGUSE	ELEV 14	TDZE 10
----------------------------	------	------	-------	---------	---------



CATEGORY	A	B	C	D	E
LNAV/VNAV DA*	260/24 250 (300-1/2)	264/24 254 (300-1/2)	272/24 262 (300-1/2)	283/24 273 (300-1/2)	304/24 294 (300-1/2)
LNAV MDA**	420/24 410 (500-1/2)	420/40	410	500-3/4	
<b>C</b> CIRCLING***	500-1 486 (500-1)	540-1 526 (600-1)	540-1 1/2 526 (600-1/2)	580-2 566 (600-2)	1020-3 1006 (1100-3)



SE-3, 14 MAY 2026 to 11 JUN 2026

SE-3, 14 MAY 2026 to 11 JUN 2026

TAMPA, FLORIDA

27°51'N - 82°31'W

MACDILL AFB (KMCF)

Amdt 2 10AUG23

# RNAV (GPS) RWY 5