

# TACAN RWY 5

TACAN MCF Chan <b>47</b>	APCH CRS <b>043°</b>	Rwy Idg <b>11,421</b> TDZE <b>10</b> Arprt Elev <b>14</b>
-----------------------------	-------------------------	---

AL-418 [USAF]

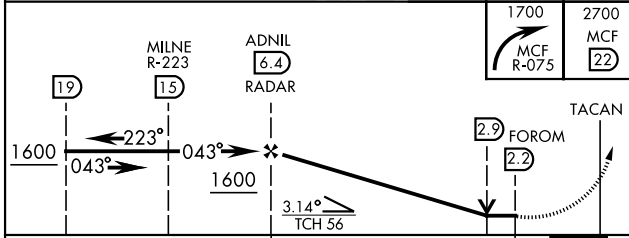
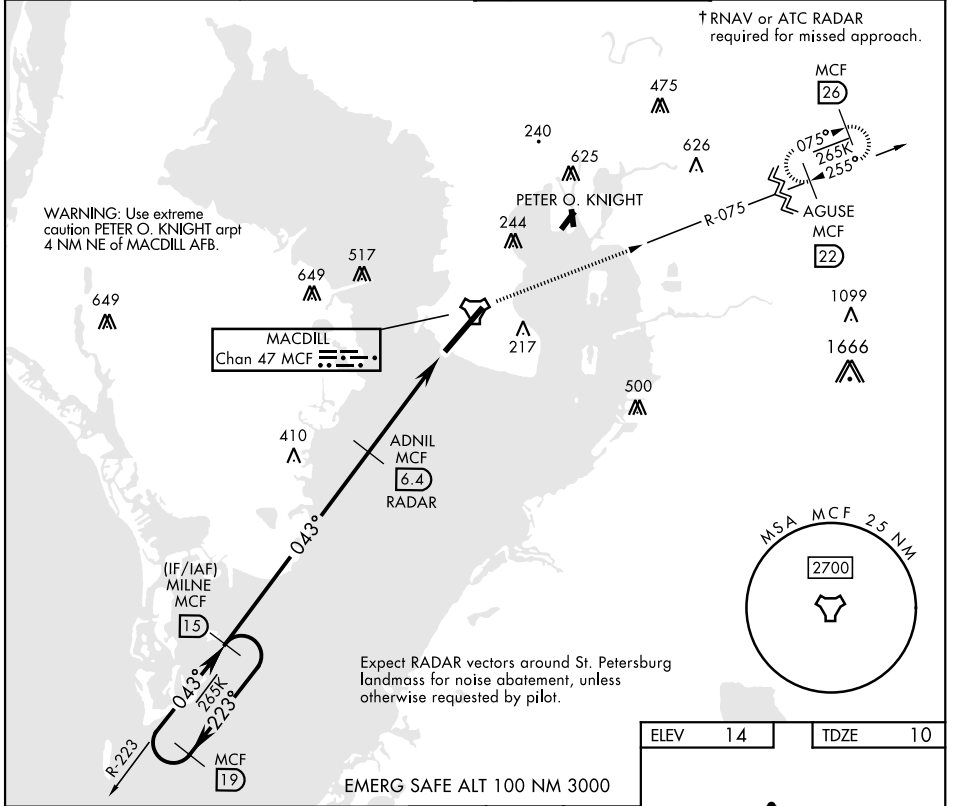
MACDILL AFB (KMCF)

\* When ALS inop, increase CAT AB RVR to 55, vis to 1 mile; CAT CDE RVR to 60, vis to 1½ miles.  
 \*\* Circling not authorized NW of Rwy 5-23.

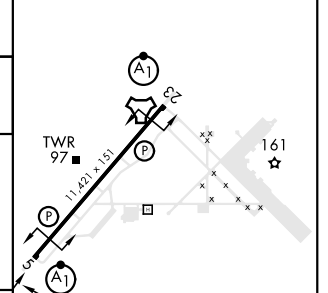


† MISSED APPROACH: Climb to 2700 via MCF R-075 to 22 DME and hold. Cross 8 DME at 1700.

ATIS <b>133.825 270.1</b>	TAMPA APP CON <b>124.95 354.0</b>	TOWER <b>120.175 294.7</b>	GND CON <b>118.575 275.8</b>
------------------------------	--------------------------------------	-------------------------------	---------------------------------



ELEV	14	TDZE	10
------	----	------	----



CATEGORY	A	B	C	D	E
S-5*	420/24 410 (500-½)		420/40 410 (500-¾)		
CIRCLING**	500-1 486 (500-1)	540-1 526 (600-1)	540-1½ 526 (600-1½)	580-2 566 (600-2)	1020-3 1006 (1100-3)

HIRL Rwy 5-23

# TACAN RWY 5

SE-3, 14 MAY 2026 to 11 JUN 2026

SE-3, 14 MAY 2026 to 11 JUN 2026