

WAAS Ch 53699 W22A	APP CRS 220°	Rwy Ldg 6602 TDZE 384 Apt Elev 390
--	------------------------	---

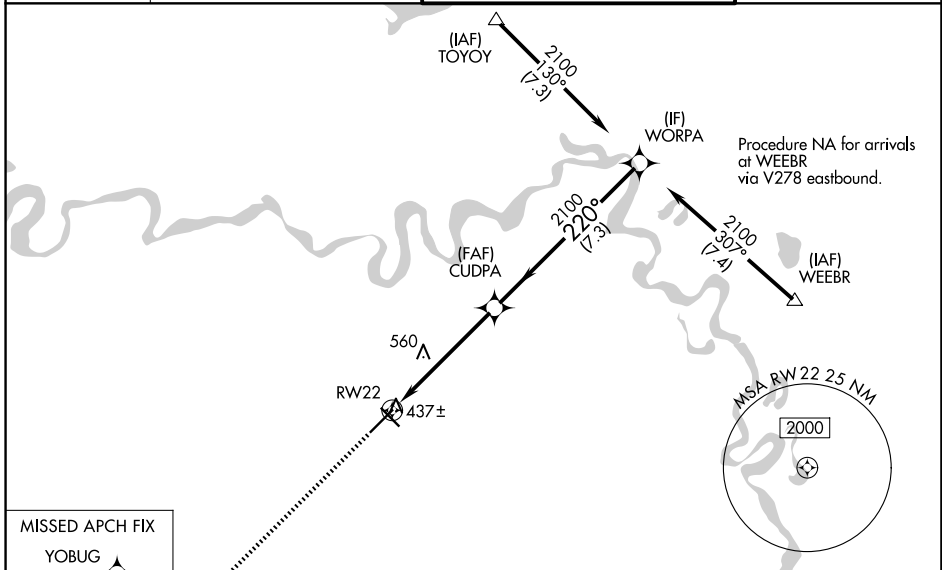
RNAV (GPS) RWY 22

TEXARKANA RGNL-WEBB FLD (TXK)

⚠ DME/DME RNP-0.3 NA. For uncompensated Baro-VNAV systems, LNAV/VNAV NA below -1.5°C (5°F) or above 48°C (118°F). When local altimeter setting not received, use J Lynn Helms Sevier County altimeter setting and increase all DA/MDA 100 feet, increase LPV all Cats visibility ¼ mile, LNAV/VNAV all Cats visibility ½ mile, LNAV and circling Cat C and D visibility ¼ mile. Baro-VNAV and VDP NA when using J Lynn Helms Sevier County altimeter setting. For inoperative MALSR when using J Lynn Helms Sevier County altimeter setting increase LPV all Cats visibility to 1¼.

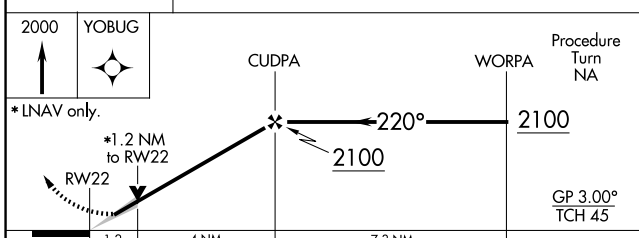
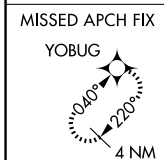
MALSR
MISSED APPROACH:
Climb to 2000 direct YOBUG and hold.

ATIS 120.2	FORT WORTH CENTER 123.925 269.475	TEXARKANA TOWER ★ 123.875 (CTAF) 0 235.625	GND CON 119.225
----------------------	---	--	---------------------------



SC-1, 14 MAY 2026 to 11 JUN 2026

SC-1, 14 MAY 2026 to 11 JUN 2026



CATEGORY	A	B	C	D
LPV DA	634-½		250 (300-½)	
LNAV/VNAV DA	687-½		303 (300-½)	687-¾ 303 (300-¾)
LNAV MDA	820-½	436 (500-½)	820-¾ 436 (500-¾)	820-1 436 (500-1)
CIRCLING	820-1 430 (500-1)	900-1 510 (600-1)	1000-1¾ 610 (700-1¾)	1080-2¼ 690 (700-2¼)

