

VORTAC TXK 116.3 Chan 110	APP CRS 122°	Rwy Ldg 4559 TDZE 388 Apt Elev 390
--	------------------------	---

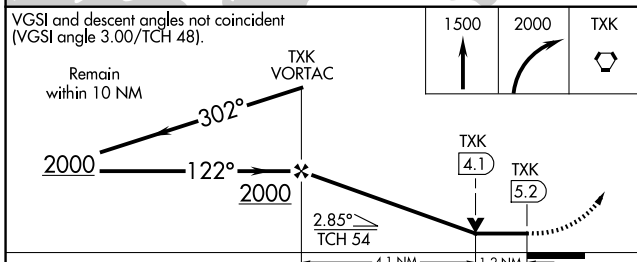
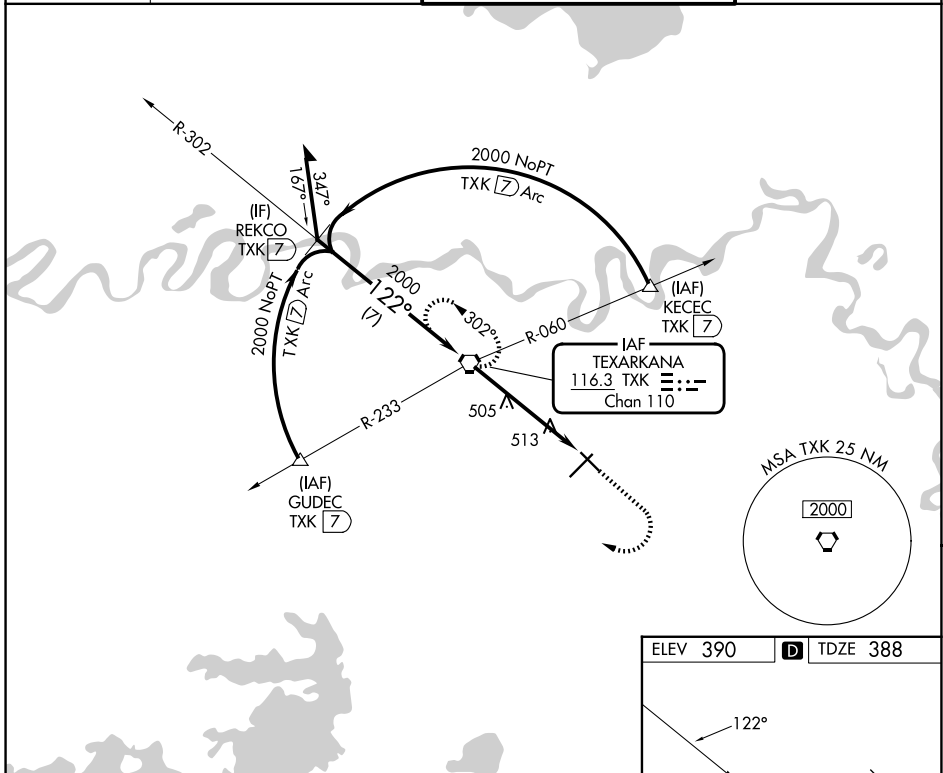
VOR RWY 13

TEXARKANA RGNL-WEBB FLD (TXK)

⚠ When local altimeter setting not received, use De Queen altimeter setting and increase all MDA 100 feet, increase S-13 and Cat C and D visibility $\frac{1}{4}$ SM, and Circling Cat C and D visibility $\frac{1}{4}$ SM. Visibility reduction by helicopters NA. VDP NA when using De Queen altimeter setting.

MISSED APPROACH: Climb to 1500 then climbing right turn to 2000 direct TXK VORTAC and hold.

ATIS 120.2	FORT WORTH CENTER 123.925 269.475	TEXARKANA TOWER* 123.875 (CTAF) 235.625	GND CON 119.225
----------------------	---	--	---------------------------



ELEV 390	D TDZE 388
----------	-------------------

MIRL Rwy 13-31 1
HIRL Rwy 4-22 1
FAF to MAP 5.2 NM
Knots: 60 90 120 150 180
Min:Sec: 5:12 3:28 2:36 2:05 1:44

CATEGORY	A	B	C	D
S-13	780-1 392 (400-1)		780-1 $\frac{1}{8}$ 392 (400-1 $\frac{1}{8}$)	780-1 $\frac{1}{4}$ 392 (400-1 $\frac{1}{4}$)
CIRCLING	820-1 430 (500-1)	900-1 510 (600-1)	1000-1 $\frac{3}{4}$ 610 (700-1 $\frac{3}{4}$)	1080-2 $\frac{1}{4}$ 690 (700-2 $\frac{1}{4}$)

SC-1, 14 MAY 2026 to 11 JUN 2026

SC-1, 14 MAY 2026 to 11 JUN 2026