

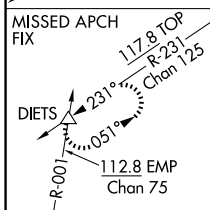
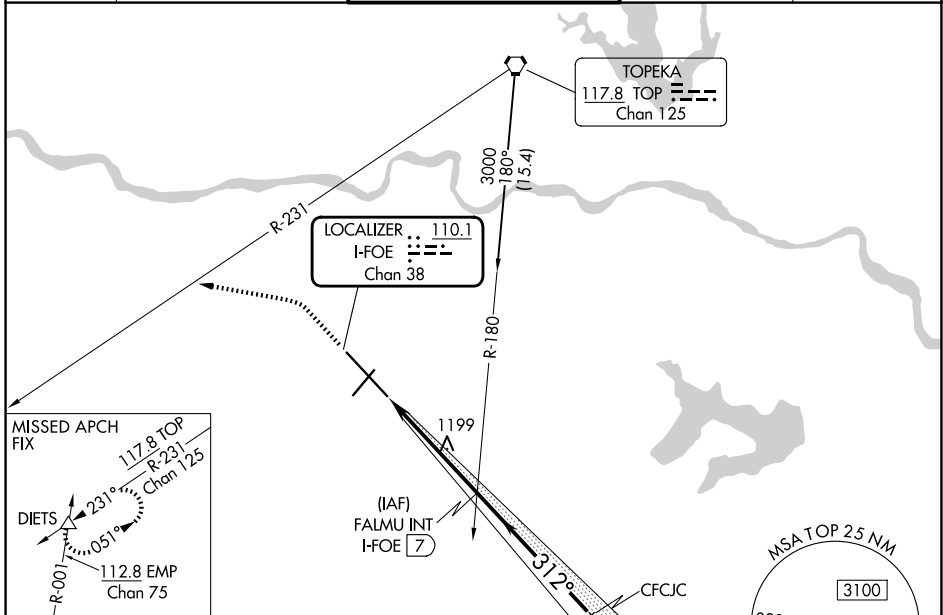
LOC/DME I-FOE <b>110.1</b> Chan <b>38</b>	APP CRS <b>312°</b>	Rwy Ldg <b>12803</b> TDZE <b>1037</b> Apt Elev <b>1078</b>
---	------------------------	--

# ILS or LOC RWY 31

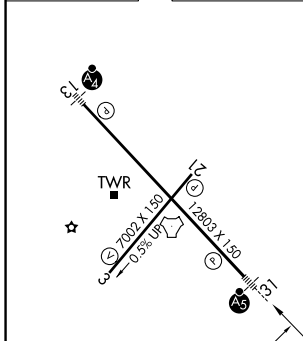
TOPEKA RGNL (FOE)

<p><b>⚠</b> For inop ALS, increase S-ILS Cat E visibility to RVR 4000 and S-LOC Cat E visibility to 1¼ SM. *RVR 1800 authorized with use of FD or AP or HUD to DA.</p>		<p>MALSR <b>45</b></p>	<p>MISSED APPROACH: Climb to 1900 then climbing left turn to 3700 on heading 275° and on TOP VORTAC R-231 to DIETS INT and hold.</p>
--	--	----------------------------	--

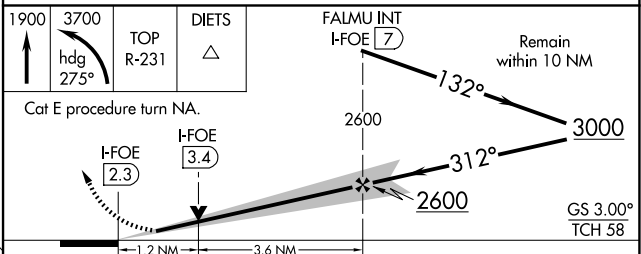
ATIS <b>128.25</b>	KANSAS CITY CENTER <b>123.8 343.7</b>	FORBES TOWER* <b>120.8 (CTAF) 0 340.2</b>	GND CON <b>118.425 275.8</b>	UNICOM <b>122.95</b>
-----------------------	--	--	---------------------------------	-------------------------



ELEV 1078	<b>D</b> TDZE 1037
-----------	--------------------



Knots	60	90	120	150	180
Min:Sec	4:42	3:08	2:21	1:53	1:34



CATEGORY	A	B	C	D	E
S-ILS 31*	1237/24 200 (200-½)				
S-LOC 31	1460/24	423 (400-½)	1460/40	423 (400-¾)	
CIRCLING	1520-1 442 (500-1)	1580-1 502 (600-1)	1580-1½ 502 (600-1½)	1700-2 622 (700-2)	1720-2¼ 642 (700-2¼)

NC-2, 14 MAY 2026 to 11 JUN 2026

NC-2, 14 MAY 2026 to 11 JUN 2026