

LOC I-TRI 109.9	APP CRS 230°	Rwy Ldg 8000
		TDZE 1519
		Apt Elev 1519

ILS RWY 23 (SA CAT I)

TRI-CITIES (TRI)

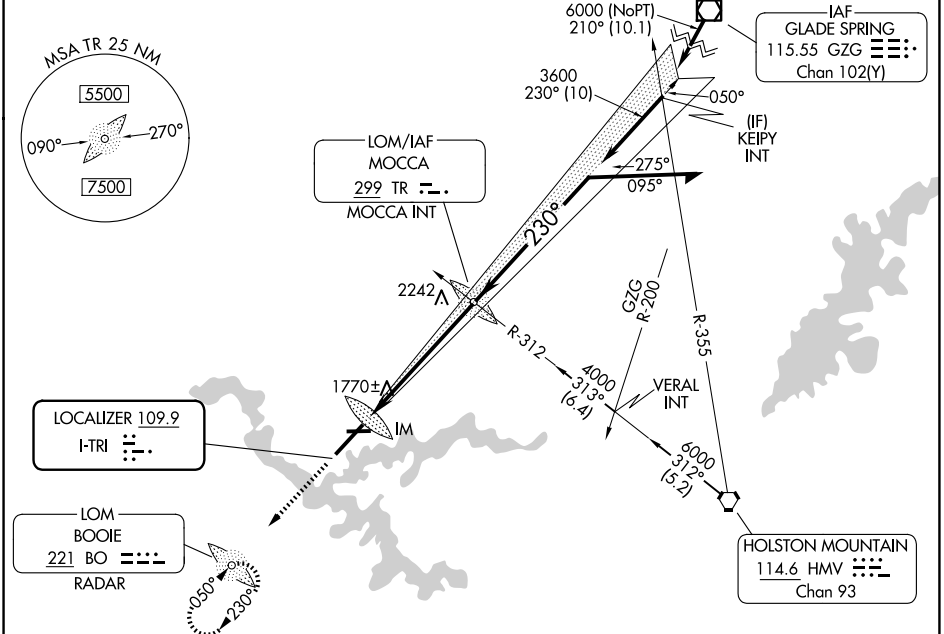
ADF or RADAR required.

Requires specific OPSPEC, MSPEC, or LOA approval and use of HUD to DH. CAUTION:
 Air traffic control tower 1634 feet MSL located 940 feet right of runway centerline
 357 feet from runway threshold. Procedure NA when tower closed.

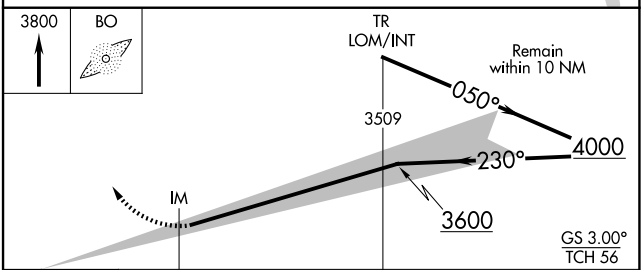
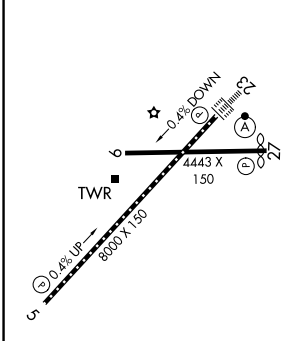


MISSED APPROACH: Climb to 3800 direct BOOIE LOM/RADAR and hold.

ATIS 118.25	TRI-CITY APP CON ★ 134.425 349.0	TRI-CITY TOWER ★ 119.5 (CTAF) 257.8	GND CON 121.7 348.6	UNICOM 122.95
-----------------------	--	---	-------------------------------	-------------------------



ELEV 1519	D	TDZE 1518
-----------	----------	-----------



1050'	6 NM			
CATEGORY	A	B	C	D
S-ILS 23	RA 192/16 150 DA 1668			

SA CATEGORY I ILS - SPECIAL AIRCREW & AIRCRAFT CERTIFICATION REQUIRED

REIL Rwy 5 and 27
 TDZL/RCLS Rwy 23
 HIRL Rwy 5-23
 MIRL Rwy 9-27

SE-1, 14 MAY 2026 to 11 JUN 2026

SE-1, 14 MAY 2026 to 11 JUN 2026