

LOC I-BON 111.5	APP CRS 050°	Rwy Ldg TDZE Apt Elev	8000 1498 1519
---------------------------	------------------------	-----------------------------	---

ILS or LOC RWY 5

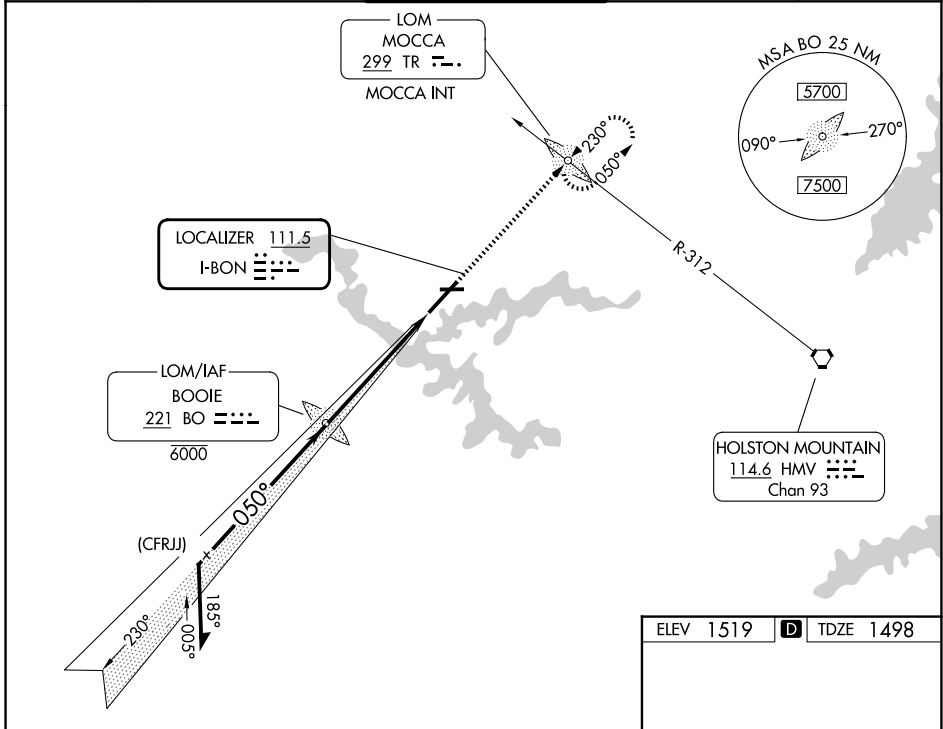
TRI-CITIES (TRI)

ADF required. RADAR required for procedure entry.

⚠ Circling to Rwy 9 NA at night. Circling NA northwest of Rwy 9 and 23. Autopilot coupled approach NA below 2200. Procedure NA when control tower closed.

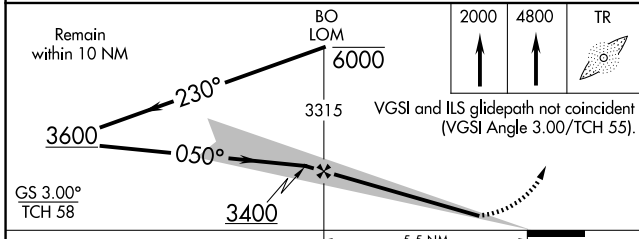
MISSED APPROACH: Climb to 2000 then climb to 4800 direct MOCCA LOM INT and hold, continue climb-in-hold to 4800.

ATIS 118.25	TRI-CITY APP CON ★ 134.425 349.0	TRI-CITY TOWER ★ 119.5 (CTAF) 257.8	GND CON 121.7 348.6	UNICOM 122.95
-----------------------	--	---	-------------------------------	-------------------------

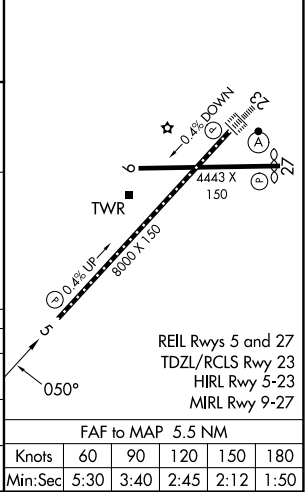


SE-1, 14 MAY 2026 to 11 JUN 2026

SE-1, 14 MAY 2026 to 11 JUN 2026



ELEV 1519	D	TDZE 1498
-----------	----------	-----------



CATEGORY	A	B	C	D
S-ILS 5	1698/40		200 (200-¾)	
S-LOC 5	2100/55	602 (600-1)	2100-1¾	602 (600-1¾)
CIRCLING	2120-1 601 (700-1)	2180-1 661 (700-1)	2320-2¼ 801 (900-2¼)	2500-3 981 (1000-3)

FAF to MAP 5.5 NM					
Knots	60	90	120	150	180
Min:Sec	5:30	3:40	2:45	2:12	1:50