

WAAS CH 77626 W23A	APP CRS 230°	Rwy Ldg TDZE Apt Elev	8000 1518 1519
--	------------------------	-----------------------------	---

RNAV (GPS) RWY 23

TRI-CITIES (TRI)

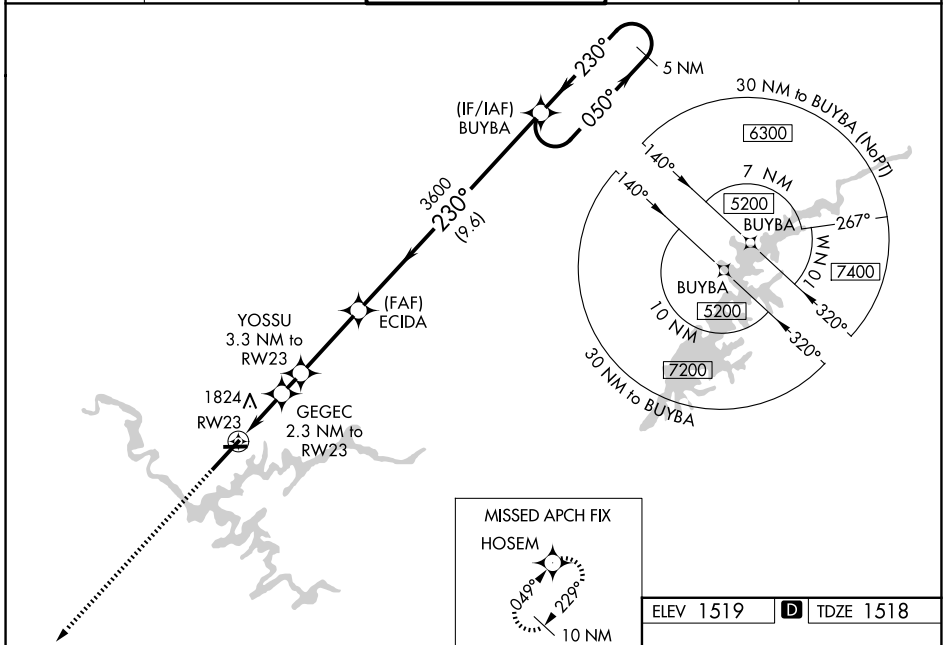
RNP APCH.

▽ For uncompensated Baro-VNAV systems, LNAV/VNAV NA below -13°C (9°F) or above 34°C (93°F). Circling NA NW of Rwy 9-23. For inoperative ALS, increase LNAV Cats C and D visibility to 1½ SM. Circling Rwy 9 NA at night.



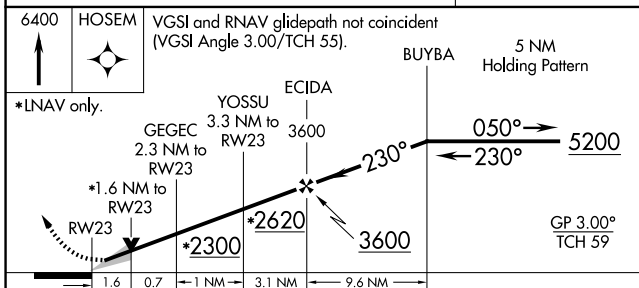
MISSED APPROACH:
Climb to 6400 direct HOSEM and hold, continue climb-in-hold to 6400.

ATIS 118.25	TRI-CITY APP CON ★ 134.425 349.0	TRI-CITY TOWER ★ 119.5 (CTAF) 257.8	GND CON 121.7 348.6	UNICOM 122.95
-----------------------	--	---	-------------------------------	-------------------------



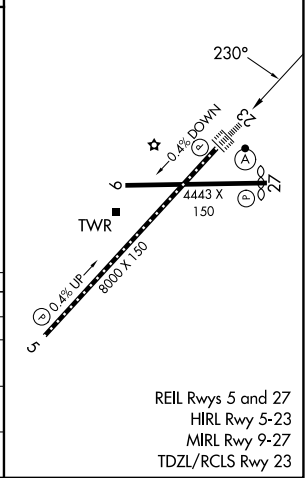
SE-1, 14 MAY 2026 to 11 JUN 2026

SE-1, 14 MAY 2026 to 11 JUN 2026



ELEV 1519	D TDZE 1518
-----------	--------------------

CATEGORY	A	B	C	D
LPV DA		1718/18	200 (200-½)	
LNAV/VNAV DA		2160-1¾	642 (700-1¾)	
LNAV MDA	2080/24	562 (600-½)	2080-1¼	562 (600-1¼)
CIRCLING	2120-1 601 (700-1)	2180-1 661 (700-1)	2300-2¼ 781 (800-2¼)	2500-3 981 (1000-3)



REIL Rwy 5 and 27
HIRL Rwy 5-23
MIRL Rwy 9-27
TDZL/RCLS Rwy 23