

APP CRS **215°**  
 Rwy Ldg **5500**  
 TDZE **5757**  
 Apt Elev **5762**

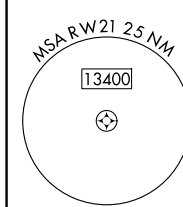
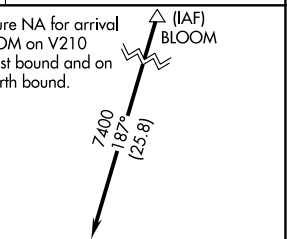
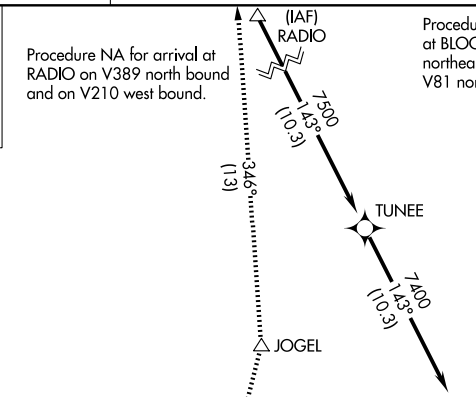
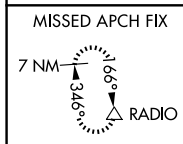
# RNAV (GPS) RWY 21

PERRY STOKES (TAD)

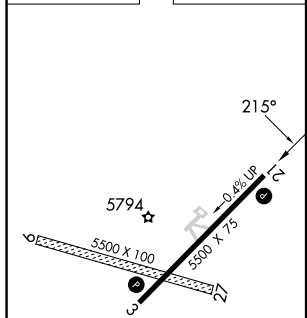
**⚠** Circling NA to Rwy 9 and 27. DME/DME RNP-0.3 NA. When local altimeter setting not received, use Pueblo altimeter setting and increase all MDA 300 feet: increase LNAV Cat C/D visibility ½ SM, Circling Cat B/D visibility ¼ SM and Circling Cat C visibility 1 SM. VDP NA when using Pueblo altimeter setting.

**⚠** MISSED APPROACH: Climb to 6200 then climbing right turn to 10000 direct JOGEL and on track 346° to RADIO and hold.

ASOS **119.025**      DENVER CENTER **128.375 379.95**      UNICOM **122.8 (CTAF)**



ELEV 5762      TDZE 5757



6200	10000	JOGEL	tr 346°	RADIO	PREYS	GOERS
↑	↷	△	△	△		
		GAUGE 2.4 NM to RW21		≤ 3.00° TCH 40	7400	7400
		0.8 NM to RW21	0.8 NM	1.6 NM	2.7 NM	5 NM
CATEGORY	A		B		C	D
LNAV MDA	6020-1 263 (300-1)					
CIRCLING	6180-1 418 (500-1)	6300-1 538 (600-1)	6340-1½ 578 (600-1½)	6580-2¾ 818 (900-2¾)		

MIRL Rwy 3-21  
 REIL Rwy 3 and 21

SW-1, 14 MAY 2026 to 11 JUN 2026

SW-1, 14 MAY 2026 to 11 JUN 2026