

(TAD1.TAD) 23278

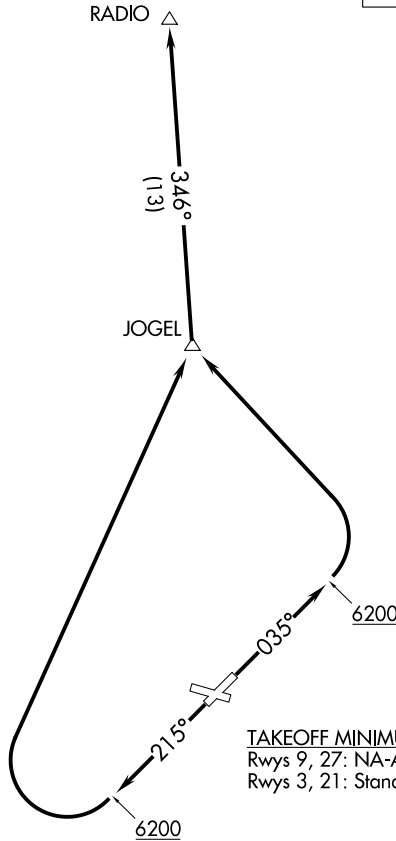
AL-427 (FAA)

TRINIDAD ONE DEPARTURE (OBSTACLE) (RNAV)

PERRY STOKES (TAD)
TRINIDAD, COLORADO

DENVER CENTER
128.375

**TOP ALTITUDE:
ASSIGNED BY ATC**



TAKEOFF MINIMUMS
Rwys 9, 27: NA-ATC
Rwys 3, 21: Standard

NOTE: GPS required.

NOTE: RNAV-1.

TAKEOFF OBSTACLE NOTES

Rwy 3: Multiple trees beginning 46' from DER, left and right of centerline, up to 15' AGL/5744' MSL.

NOTE: Chart not to scale.

DEPARTURE ROUTE DESCRIPTION

TAKEOFF RUNWAY 3: Climb heading 035° to 6200, then climbing left turn to 10000 direct JOGEL and on track 346° to RADIO.

TAKEOFF RUNWAY 21: Climb heading 215° to 6200, then climbing right turn to 10000 direct JOGEL and on track 346° to RADIO.

LOST COMMUNICATIONS:

If not in contact with Denver ARTCC at 10000 or assigned altitude if lower, continue climb to assigned altitude and thence on assigned route.

TRINIDAD ONE DEPARTURE (OBSTACLE) (RNAV)

TRINIDAD, COLORADO
PERRY STOKES (TAD)

(TAD1.TAD) 15SEP16

SW-1, 14 MAY 2026 to 11 JUN 2026

SW-1, 14 MAY 2026 to 11 JUN 2026