

HI-ILS or LOC Z RWY 13

LOC I-AFB 109.3	APCH CRS 128°	Rwy Idg 13,645 TDZE 2615 Arpt Elev 2704
---------------------------	-------------------------	--

[USAF]

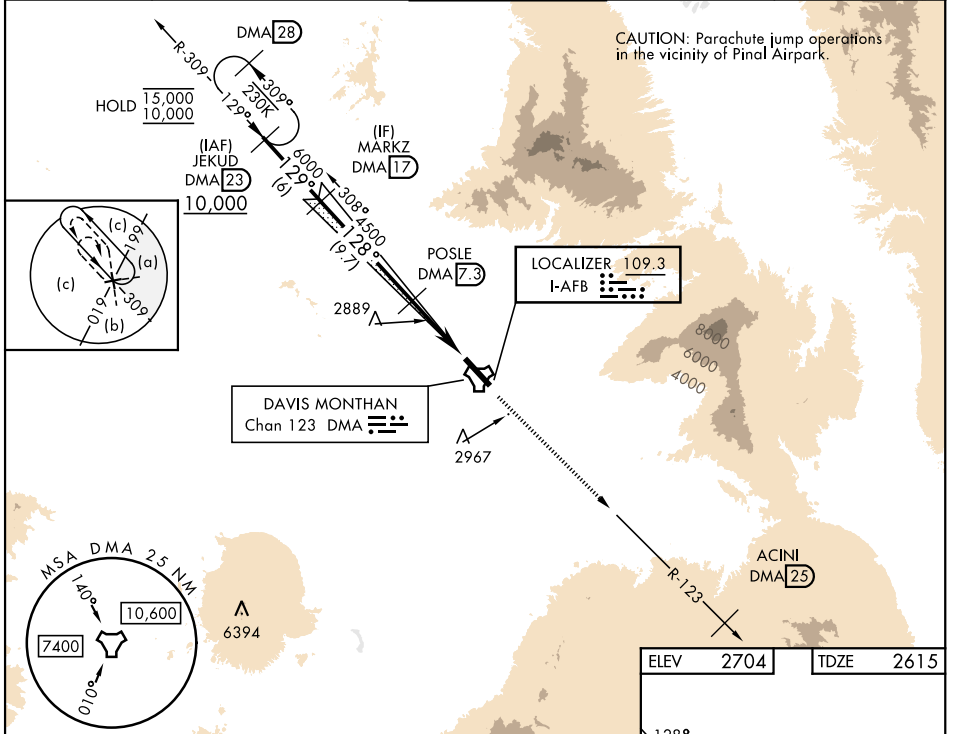
DAVIS-MONTHAN AFB (KDMA)

DME or RADAR required

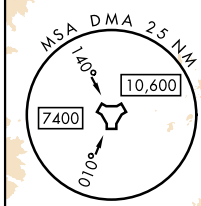
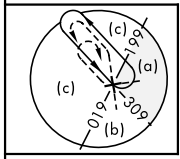
▼ * Circling not authorized SW of Rwy 13-31.

MISSED APPROACH: Climbing to 8000 intercept DMA TACAN R-123 to ACINI. Expect RADAR vectors.

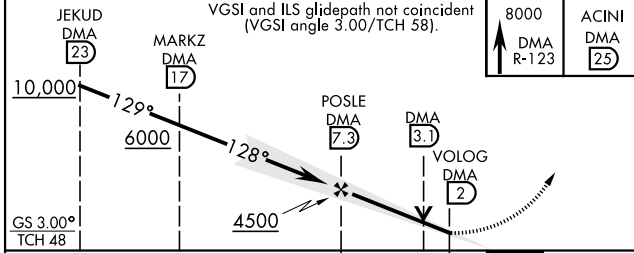
ATIS★ 132.3 270.1	TUCSON APP CON 066°-274° 119.4 318.1 275°-065° 125.1 269.55	TOWER 118.85 253.5	GND CON 121.8 275.8	CLNC DEL 121.8 275.8
-----------------------------	---	------------------------------	-------------------------------	--------------------------------



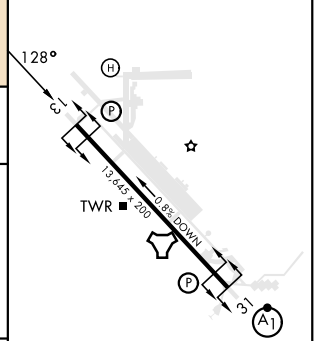
CAUTION: Parachute jump operations in the vicinity of Pinal Airpark.



EMERG SAFE ALT 100 NM 17,000



ELEV 2704	TDZE 2615
-----------	-----------



CATEGORY	C	D	E
S-ILS 13		2815/40 200 (200-¾)	
S-LOC 13		3160-1½ 545 (500-1%)	
CIRCLING*	3280-1⅝ 576 (600-1%)	3420-2¼ 716 (800-2¼)	3460-2¾ 756 (800-2¾)

REIL Rwy 13	
HIRL Rwy 13-31	
FAF to MAP 5.3 NM	
Knots	120 140 160 180 200
Min:Sec	2:39 2:16 1:59 1:46 1:35

HI-ILS or LOC Z RWY 13

SW-4, 14 MAY 2026 to 11 JUN 2026

SW-4, 14 MAY 2026 to 11 JUN 2026