

TUCSON, ARIZONA

# TACAN Y RWY 31

DAVIS-MONTHAN AFB (KDMA)

TACAN DMA Chan <b>123</b>	APCH CRS <b>302°</b>	Rwy Idg <b>13,645</b> TDZE <b>2704</b> Arprt Elev <b>2704</b>
------------------------------	-------------------------	---

[USAF]

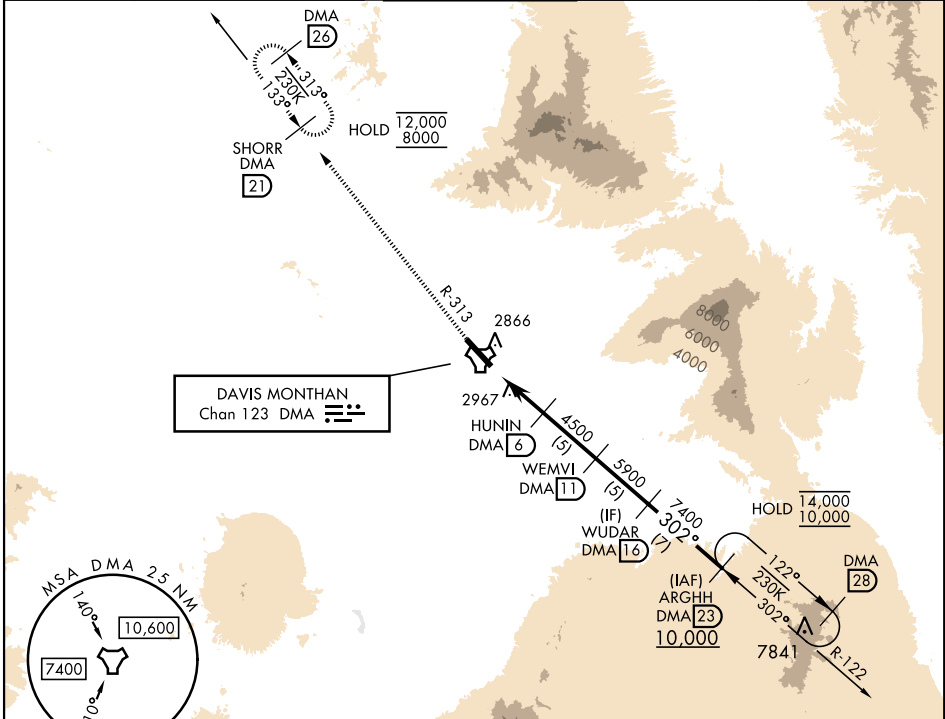
▼ \* When ALS inop, increase CAT AB RVR to 55 vis to 1 mile; CAT CDE vis to 2 miles.  
\*\* Circling not authorized SW of Rwy 13-31.

ALSF-1

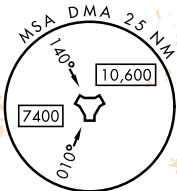


MISSED APPROACH: Climb to 8000, intercept DMA TACAN R-313 to SHORR and hold, continue climb-in-hold to 8000.

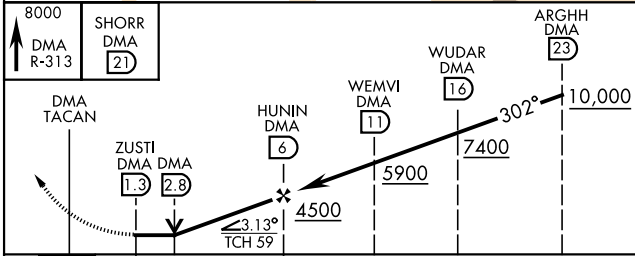
ATIS★ <b>132.3 270.1</b>	TUCSON APP CON 066°-274° <b>119.4 318.1</b> 275°-065° <b>125.1 269.55</b>	TOWER <b>118.85 253.5</b>	GND CON <b>121.8 275.8</b>	CLNC DEL <b>121.8 275.8</b>
-----------------------------	---	------------------------------	-------------------------------	--------------------------------



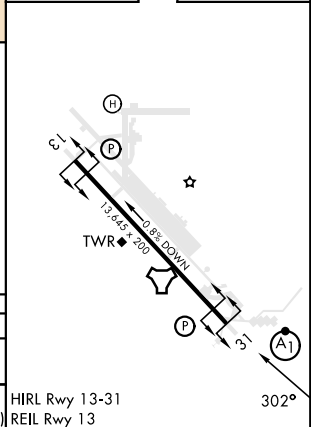
DAVIS MONTHAN  
Chan 123 DMA



EMERG SAFE ALT 100 NM 17,000



ELEV	2704	TDZE	2704
------	------	------	------



CATEGORY	A	B	C	D	E
S-31 *	3420/24 716 (800-½)		3420-1⅞ 716 (800-1⅞)		
CIRCLING **	3420-1 716 (800-1)		3420-2 716 (800-2)	3420-2¼ 716 (800-2¼)	3460-2¾ 756 (800-2¾)

HIRL Rwy 13-31  
REIL Rwy 13

TUCSON, ARIZONA

32°10'N-110°53'W

DAVIS-MONTHAN AFB (KDMA)

Orig 31OCT24

# TACAN Y RWY 31

SW-4, 14 MAY 2026 to 11 JUN 2026

SW-4, 14 MAY 2026 to 11 JUN 2026