

LOC/DME I-TUS 111.7 Chan 54	APP CRS 126°	Rwy Ldg 10996 TDZE 2599 Apt Elev 2643
---	------------------------	--

ILS or LOC RWY 12

TUCSON INTL (TUS)

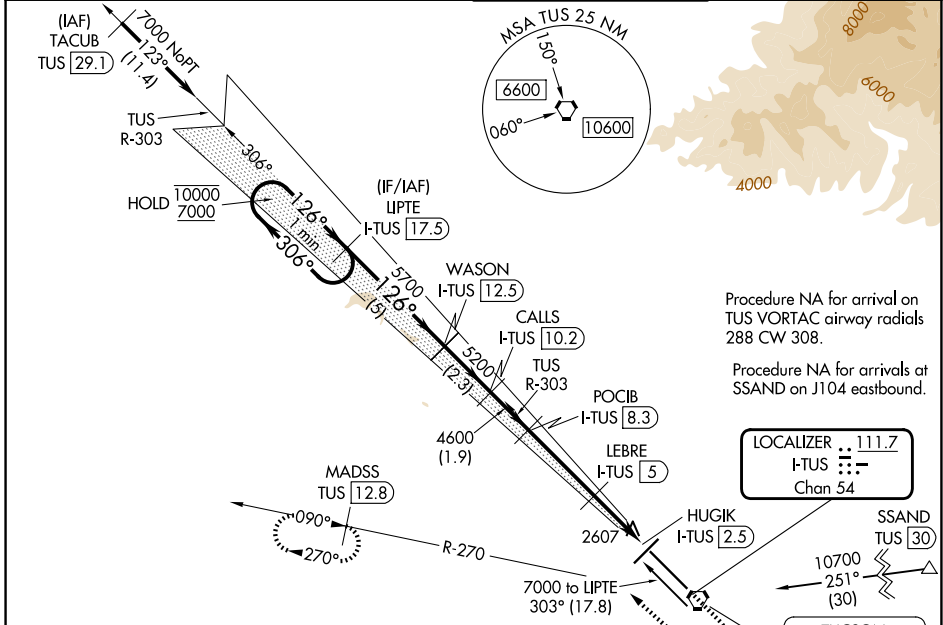
RADAR or DME required. RADAR required for procedure entry at TACUB.

- For inop ALS, increase S-ILS 12 Cat E visibility to RVR 4000,
- S-LOC 12 Cat E visibility to 2 1/2 SM; LEBRE fix minimums: S-LOC 12 Cat C/D/E visibility to RVR 5500.
- *RVR 1800 authorized with use of FD or AP or HUD to DA.



MISSED APPROACH: Climb to 4000 then climbing right turn to 6000 on heading 300° and on TUS VORTAC R-270 to MADSS/TUS 12.8 DME and hold, continue climb in-hold to 6000.

ATIS 123.8 279.65	TUCSON APP CON 119.4 318.1	TUCSON TOWER 118.3 257.8	GND CON 120.025 348.6
-----------------------------	--------------------------------------	------------------------------------	---------------------------------



Procedure NA for arrival on TUS VORTAC airway radials 288 CW 308.

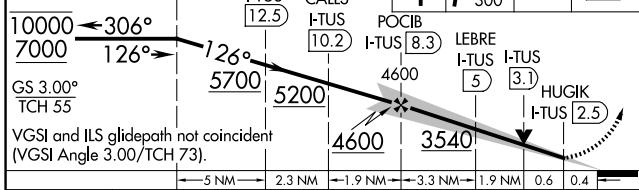
Procedure NA for arrivals at SSAND on J104 eastbound.

LOCALIZER 111.7
I-TUS
Chan 54

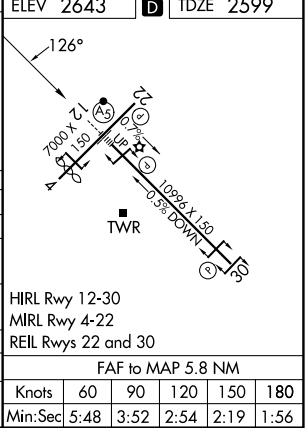
TUCSON 116.0
TUS
Chan 107

Use I-TUS DME when on the localizer course.

LIPTTE I-TUS (17.5)	WASON I-TUS (12.5)	CALLS I-TUS (10.2)	POCIB I-TUS (8.3)	LEBRE I-TUS (5)	HUGIK I-TUS (2.5)	TUS R-270	MADSS TUS (12.8)
---------------------	--------------------	--------------------	-------------------	-----------------	-------------------	-----------	------------------



CATEGORY	A	B	C	D	E
S-ILS 12*	2799/24 200 (200-1/2)				
S-LOC 12	3540/40	941 (900-3/4)	3540-2 941 (900-2)		
CIRCLING	3540-1 1/4	897 (900-1 1/4)	3540-2 3/4 897 (900-2 3/4)	3640-3 997 (1000-3)	3900-3 1257 (1300-3)
LEBRE FIX MINIMUMS					
S-LOC 12	2960/24	361 (400-1/2)	2960/35	361 (400-3/4)	
CIRCLING	3160-1 517 (600-1)	3220-1 577 (600-1)	3220-1 1/2 577 (600-1 1/2)	3640-3 997 (1000-3)	3900-3 1257 (1300-3)



SW-4, 14 MAY 2026 to 11 JUN 2026

SW-4, 14 MAY 2026 to 11 JUN 2026