

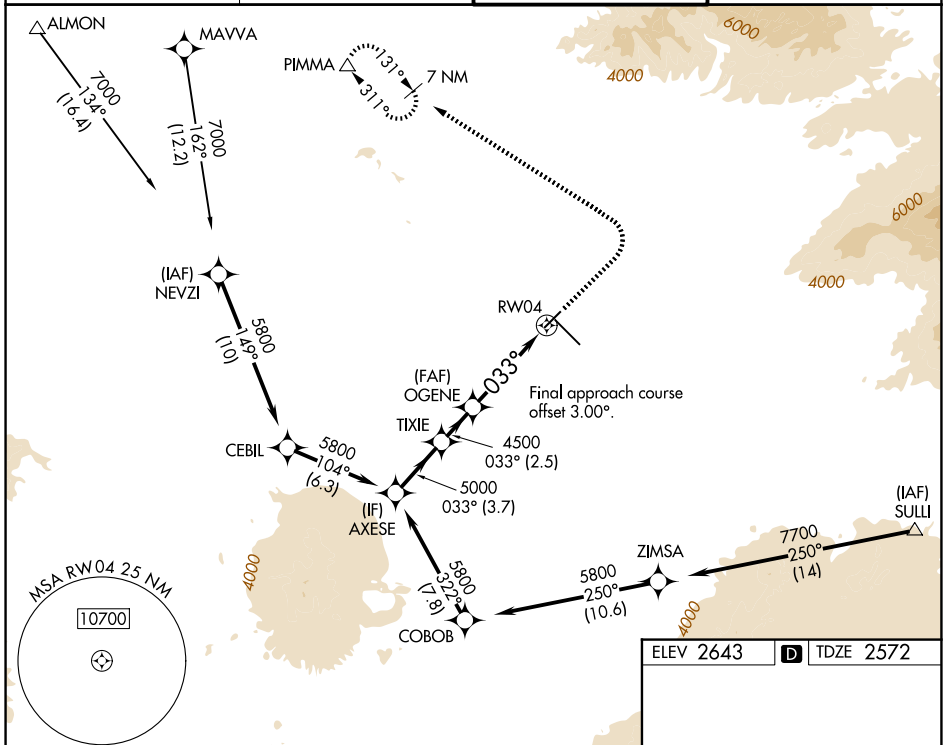
APP CRS	Rwy Ldg	6150
033°	TDZE	2572
	Apt Elev	2643

RNAV (GPS) RWY 4

TUCSON INTL (TUS)

RNP APCH - GPS.	MISSED APPROACH: Climb to 3500 then climbing left turn to 6500 direct PIMMA and hold.
<p>▼ Rwy 4 helicopter visibility reduction below 3/4 SM NA. For uncompensated Baro-VNAV systems, LNAV/VNAV NA below -2°C or above 54°C.</p> <p>▲</p>	

ATIS 123.8 279.65	TUCSON APP CON 119.4 318.1	TUCSON TOWER 118.3 257.8	GND CON 120.025 348.6
-----------------------------	--------------------------------------	------------------------------------	---------------------------------

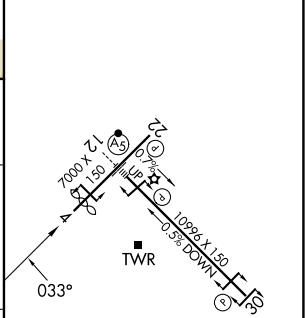


SW-4, 14 MAY 2026 to 11 JUN 2026

SW-4, 14 MAY 2026 to 11 JUN 2026

ELEV 2643	D TDZE 2572
-----------	--------------------

	AXESE	TIXIE	OGENE	3500	6500	PIMMA
	5800		4500	↑	↶	△
	033°		4500	1.8 NM to RW04		
GP 3.00°						
TCH 50						
	← 3.7 NM	← 2.5 NM	← 4.1 NM	← 1.8 NM		
CATEGORY	A	B	C	D		
LNAV/ VNAV DA	3284-2½		712 (700-2½)			
LNAV MDA	3180-1	608 (600-1)	3180-1¾	608 (600-1¾)		
CIRCLING	3180-1 537 (600-1)	3220-1 577 (600-1)	3220-1¾ 577 (600-1¾)	3660-3 1017 (1100-3)		



HIRL Rwy 12-30
MIRL Rwy 4-22
REIL Rwy 22 and 30