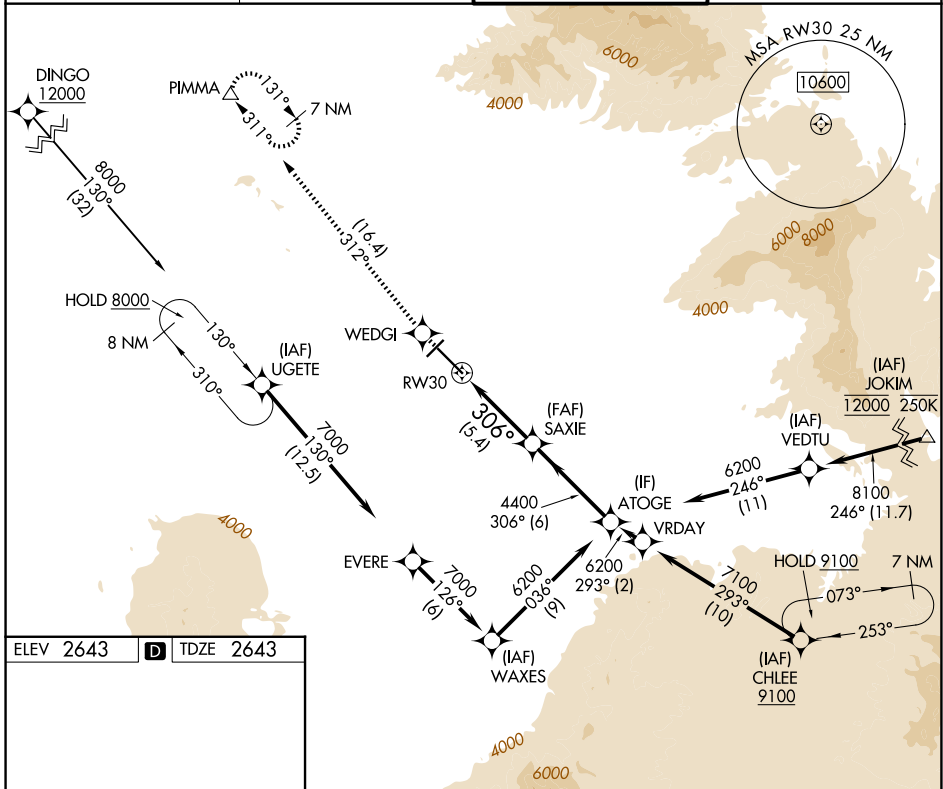


APP CRS 306°	Rwy Ldg TDZE Apt Elev	10996 2643 2643
------------------------	-----------------------------	--

RNAV (RNP) Y RWY 30

TUCSON INTL (TUS)

RNP AR APCH - GPS.		MISSED APPROACH: Climb to 6800 direct WEDGI and on track 312° to PIMMA and hold.	
ATIS 123.8 279.65	TUCSON APP CON 119.4 318.1	TUCSON TOWER 118.3 257.8	GND CON 120.025 348.6



ELEV 2643	D	TDZE 2643
-----------	----------	-----------

HIRL Rwy 12-30
MIRL Rwy 4-22
REIL Rwy 22 and 30

6800	WEDGI	PIMMA	VGSI and RNAV glidepath not coincident (VGSI Angle 3.00/TCH 81).
↑	✦	tr 312°	
SAXIE 4400		ATOGE 6200	
RW30		GP 3.00° TCH 53	
5.4 NM		6 NM	
CATEGORY	A	B	C
RNP 0.30 DA	3062-1½ 419 (500-1½)		

AUTHORIZATION REQUIRED

SW-4, 14 MAY 2026 to 11 JUN 2026

SW-4, 14 MAY 2026 to 11 JUN 2026