

LOC/DME I-DWE 109.7 Chan 34	APP CRS 180°	Rwy Ldg TDZE 10000 641 Apt Elev 678
---	------------------------	--

ILS or LOC RWY 18L

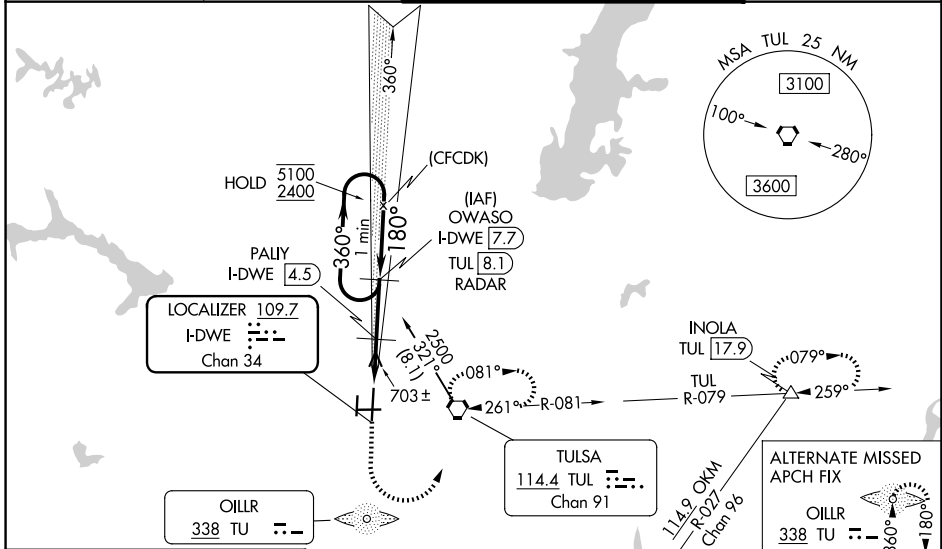
TULSA INTL (TUL)

DME required for LOC only.
DME or RADAR required for procedure entry.

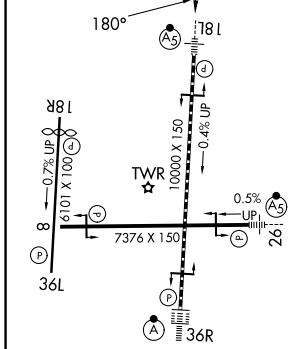
ASR Circling NA for Cat E south of Rwy 8-26. Simultaneous approach authorized with Rwy 18R. Autopilot coupled approach NA below 813 feet. For inop ALS, increase S-ILS 18L Cat E visibility to RVR 4000, S-LOC 18L Cat E visibility to 1 $\frac{1}{2}$ SM, and PALIY fix minimums S-LOC 18L Cat E visibility to RVR 4500. #RVR 1800 authorized with use of FD or AP or HUD to DA.

MALSR MISSED APPROACH: Climb to 2000 then climbing left turn to 2500 direct TUL VORTAC and hold, continue climb-in-hold to 2500. (TACAN aircraft climb to 1800 then climbing left turn to 3500 on TUL VORTAC R-079 to INOLA INT/17.9 DME and hold E, RT, 259° inbound).

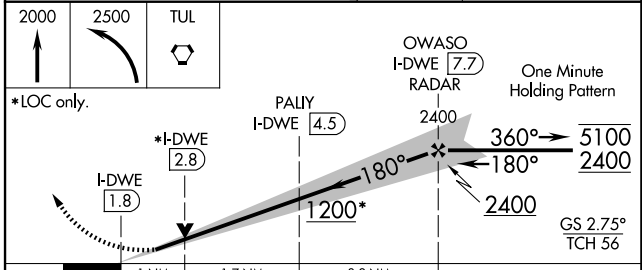
D-ATIS 124.9 377.2	TULSA APP CON 124.0 338.3	TULSA TOWER 121.2 310.8 (08/26, 18L/36R) 118.7 257.8 (18R/36L)	GND CON 121.9 348.6
------------------------------	-------------------------------------	--	-------------------------------



ELEV 678	D	TDZE 641
----------	----------	----------



TDZ/CL Rwy 36R	HIRL Rwy 8-26, 18L-36R and 18R-36L	REIL Rwy 8, 18L and 36L			
FAF to MAP 5.9 NM					
Knots	60	90	120	150	180
Min:Sec	5:54	3:56	2:57	2:22	1:58



CATEGORY	A	B	C	D	E
S-ILS 18L #	841/24 200 (200- $\frac{1}{2}$)				
S-LOC 18L	1200/24	559 (600- $\frac{1}{2}$)	1200/60 559 (600-1 $\frac{1}{4}$)		
CIRCLING	1200-1	522 (600-1)	1520-2 $\frac{1}{2}$ 842 (900-2 $\frac{1}{2}$)	1520-2 $\frac{3}{4}$ 842 (900-2 $\frac{3}{4}$)	1520-3 842 (900-3)
PALIY FIX MINIMUMS (DME REQUIRED)					
S-LOC 18L	960/24	319 (300- $\frac{1}{2}$)	960/40 319 (300- $\frac{3}{4}$)		
CIRCLING	1120-1 442 (500-1)	1160-1 482 (500-1)	1520-2 $\frac{1}{2}$ 842 (900-2 $\frac{1}{2}$)	1520-2 $\frac{3}{4}$ 842 (900-2 $\frac{3}{4}$)	1520-3 842 (900-3)

SC-1, 14 MAY 2026 to 11 JUN 2026

SC-1, 14 MAY 2026 to 11 JUN 2026