

WAAS CH <b>82214</b> <b>W36A</b>	APP CRS <b>360°</b>	Rwy Ldg <b>10000</b> TDZE <b>650</b> Apt Elev <b>678</b>
--	------------------------	--

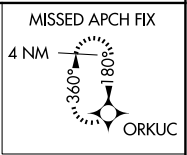
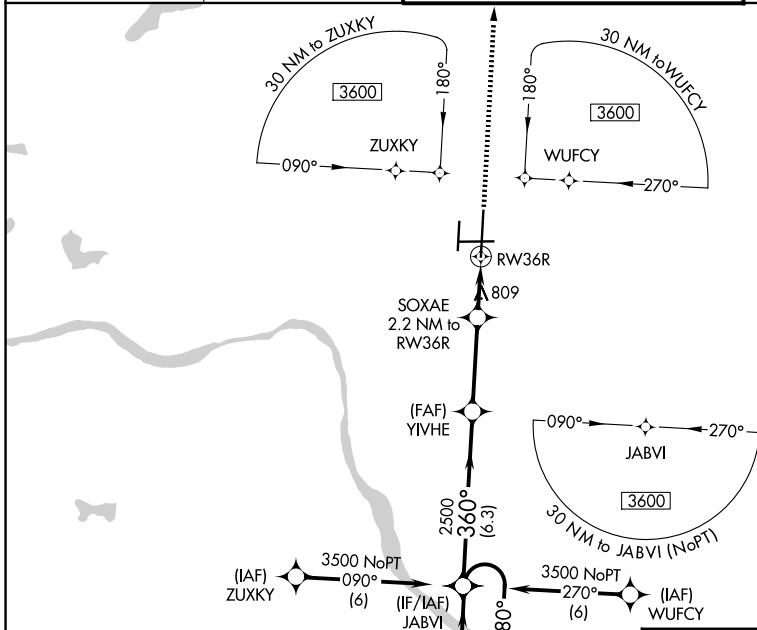
# RNAV (GPS) RWY 36R

TULSA INTL (TUL)

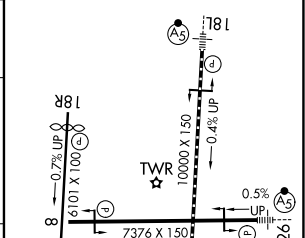
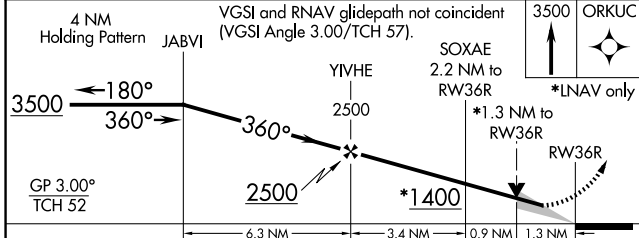
**⚠** For uncompensated Baro-VNAV systems, LNAV/VNAV NA below -13°C (9°F) or above 54°C (130°F). Circling NA for Cat E south of Rwy 8-26. DME/DME RNP-0.3 NA.  
**ASR** For inop ALSF-2, increase LPV Cat E visibility to RVR 4000, LNAV/VNAV all Cats visibility to 1½ mile, and LNAV Cats C/D/E visibility to 1½ mile.

**ALSF-2**  
 MISSED APPROACH:  
 Climb to 3500 direct ORKUC and hold.

D-ATIS <b>124.9 377.2</b>	TULSA APP CON <b>124.0 338.3</b>	TULSA TOWER <b>121.2 310.8</b> (08/26, 18L/36R) <b>118.7 257.8</b> (18R/36L)	GND CON <b>121.9 348.6</b>
------------------------------	-------------------------------------	--	-------------------------------



ELEV 678	<b>D</b> TDZE 650
TDZ/CL Rwy 36R HIRL Rwys 8-26, 18L-36R and 18R-36L REIL Rwys 8, 18R and 36L	



CATEGORY	A	B	C	D	E	
LPV DA	850/18		200 (200-½)			
LNAV/VNAV DA	1145-1¼		495 (500-1¼)			
LNAV MDA	1120/24		470 (500-½)		1120/50	470 (500-1)
CIRCLING	1120-1	1160-1	1520-2½	1520-2¾	1520-3	
	442 (500-1)	482 (500-1)	842 (900-2½)	842 (900-2¾)	842 (900-3)	

SC-1, 14 MAY 2026 to 11 JUN 2026

SC-1, 14 MAY 2026 to 11 JUN 2026