

WAAS CH 63131 W08A	APP CRS 086°	Rwy Ldg 7376 TDZE 671 Apt Elev 678
--	------------------------	---

RNAV (GPS) RWY 8

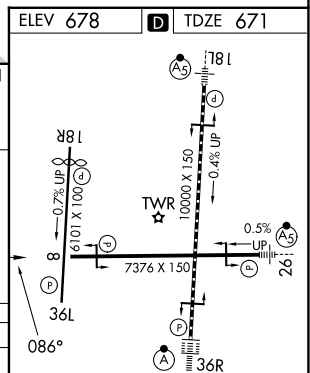
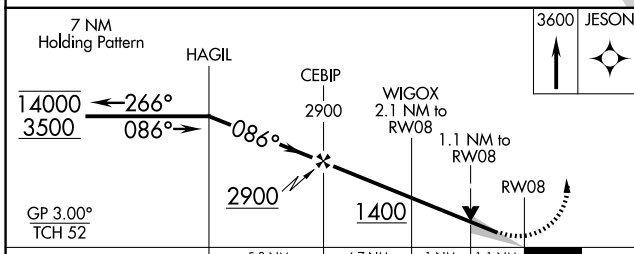
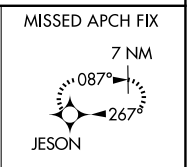
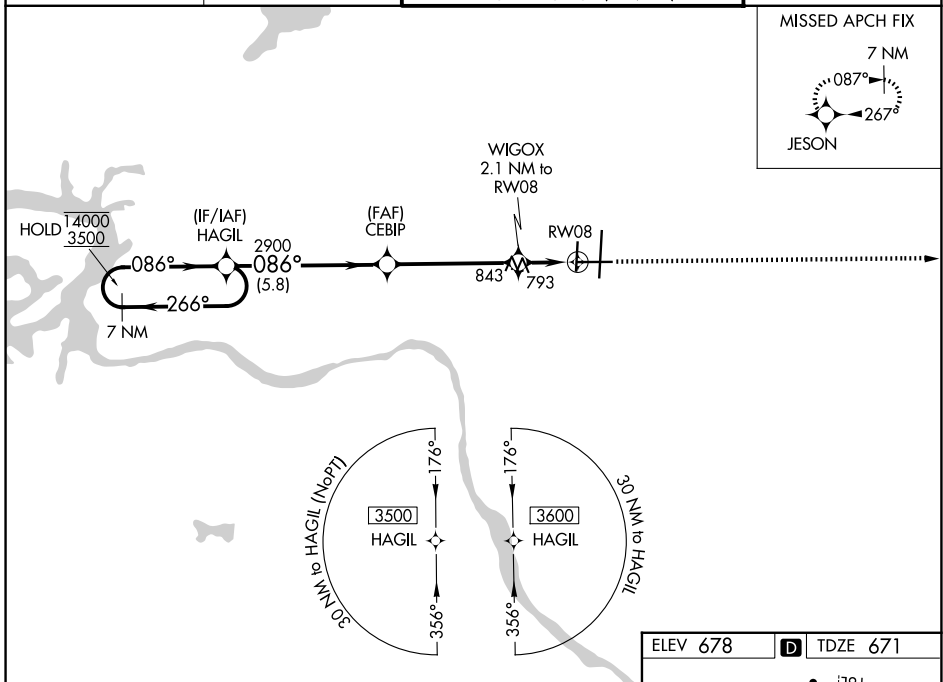
TULSA INTL (TUL)

RNP APCH - GPS.

ASR Circling NA for Cat E south of Rwy 8-26. For uncompensated Baro-VNAV systems, LNAV/VNAV NA below -12°C or above 54°C.

MISSED APPROACH: Climb to 3600 direct JESON and hold, continue climb in hold to 3600.

D-ATIS 124.9 377.2	TULSA APP CON 124.0 338.3	TULSA TOWER 121.2 310.8 (08/26, 18L/36R) 118.7 257.8 (18R/36L)	GND CON 121.9 348.6
------------------------------	-------------------------------------	--	-------------------------------



CATEGORY	A	B	C	D	E
LPV DA		871- ³ / ₄	200 (200- ³ / ₄)		
LNAV/VNAV DA		985- ⁷ / ₈	314 (400- ⁷ / ₈)		
LNAV MDA	1060-1	389 (400-1)	1060- ¹ / ₈	389 (400- ¹ / ₈)	
CIRCLING	1120-1 442 (500-1)	1160-1 482 (500-1)	1520-2 ¹ / ₂ 842 (900-2 ¹ / ₂)	1520-2 ³ / ₄ 842 (900-2 ³ / ₄)	1520-3 842 (900-3)

TDZ/CL Rwy 36R
HIRL Rwy 8-26, 18L-36R and 18R-36L
REIL Rwy 8, 18R and 36L

SC-1, 14 MAY 2026 to 11 JUN 2026

SC-1, 14 MAY 2026 to 11 JUN 2026