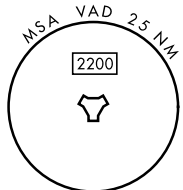
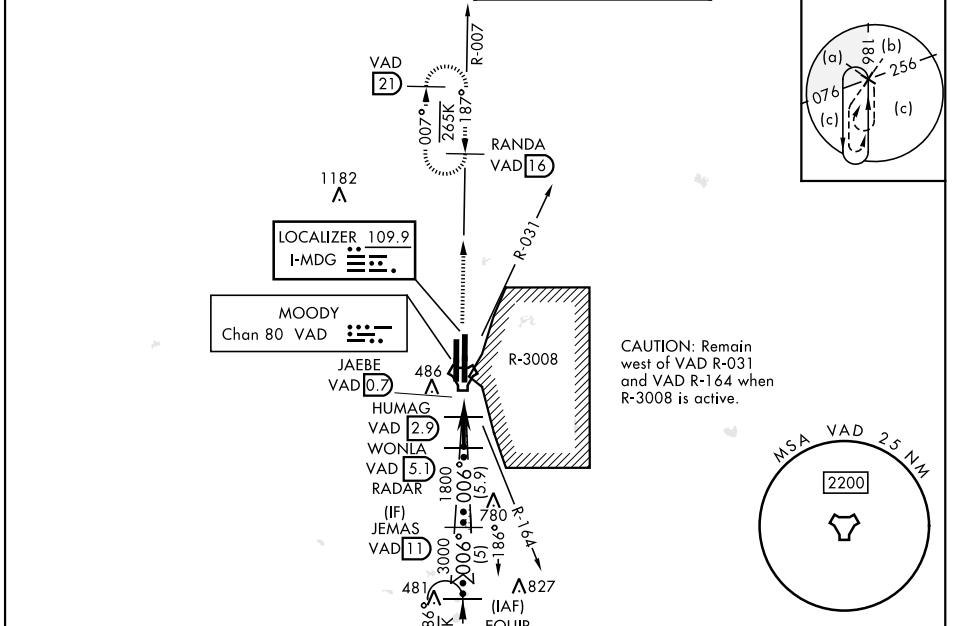


HI-ILS Z or LOC Z RWY 1R

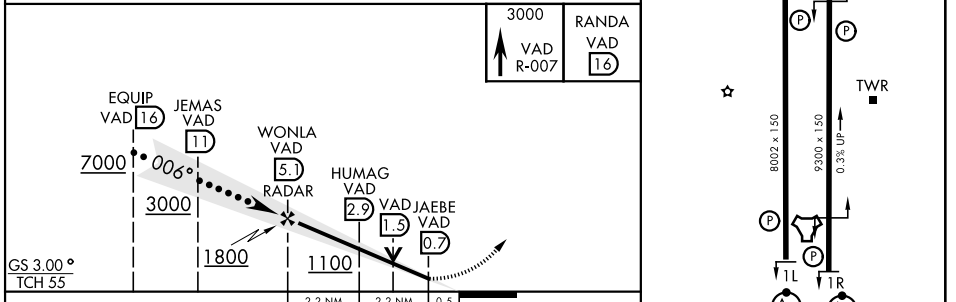
LOC I-MDG 109.9	APCH CRS 006°	Rwy Idg TDZE Arpt Elev 9300 217 233	[USAF]	MOODY AFB (KVAD)
---------------------------	-------------------------	---	--------	------------------

RADAR or DME required	ALSIF-1 (A1)	MISSED APPROACH: Climb to 3000 on VAD TACAN R-007 to RANDA and hold.
-----------------------	-----------------	--

ATIS ★ 142.6 273.5	VALDOSTA APP CON ★ 126.6 285.6	TOWER ★ 128.45 (CTAF) 257.625	GND CON 138.95 275.8
------------------------------	--	---	--------------------------------



ELEV 233	TDZE 217
----------	----------



CATEGORY	C	D	E
S-ILS 1R*	417/24	200	(200-1/2)
S-LOC 1R**	660/45	443	(500-1/2)
CIRCLING	800-1 1/2 567 (600-1/2)	800-2 567 (600-2)	

HIRL all rws	FAF to MAP 4.3 NM				
Knots	120	140	160	180	200
Min:Sec	2:09	1:51	1:37	1:26	1:17

HI-ILS Z or LOC Z RWY 1R

SE-4, 14 MAY 2026 to 11 JUN 2026

SE-4, 14 MAY 2026 to 11 JUN 2026