

# HI-TACAN Z RWY 1R

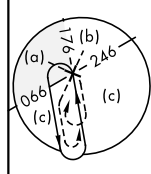
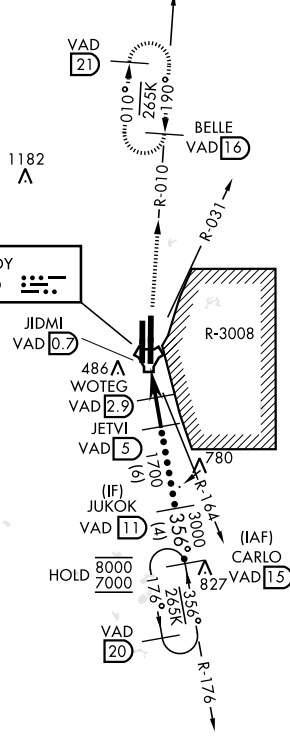
TACAN VAD Chan <b>80</b>	APCH CRS <b>356°</b>	Rwy ldg TDZE Arprt Elev <b>9300</b> <b>217</b> <b>233</b>
-----------------------------	-------------------------	--

[USAF]

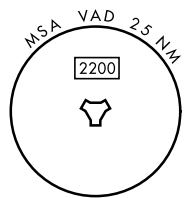
MOODY AFB (KVAD)

<p>▲ * When ALS inop, increase vis to 1½ miles.</p>	<p>ALSF-1 <b>(A1)</b></p>	<p>MISSED APPROACH: Climb to 3000 on VAD TACAN R-010 to BELLE and hold.</p>
---	-------------------------------	---

<p>ATIS ★ <b>142.6 273.5</b></p>	<p>VALDOSTA APP CON ★ <b>126.6 285.6</b></p>	<p>TOWER ★ <b>128.45 (CTAF) 257.625</b></p>	<p>GND CON <b>138.95 275.8</b></p>
--------------------------------------	--	---	--



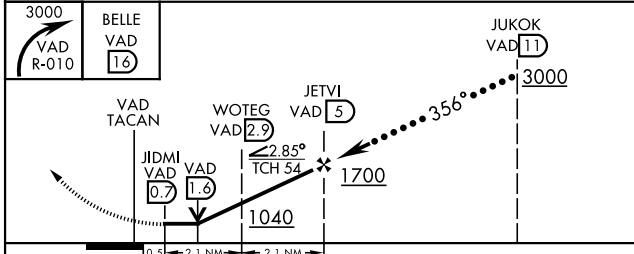
CAUTION: Remain west of VAD R-031 and VAD R-164 when R-3008 is active.



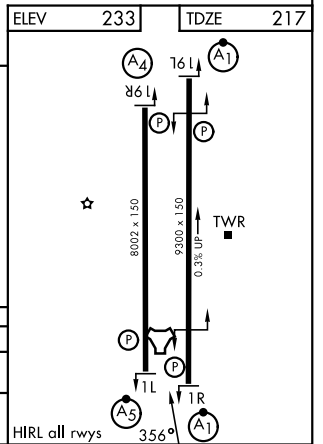
SE-4, 14 MAY 2026 to 11 JUN 2026

SE-4, 14 MAY 2026 to 11 JUN 2026

EMERG SAFE ALT 100 NM 3300



CATEGORY	C	D	E
S-1R*	680/50	463 (500-1)	
CIRCLING	800-1½ 567 (600-1½)	800-2 567 (600-2)	



# HI-TACAN Z RWY 1R