

# ILS Y or LOC Y RWY 1R

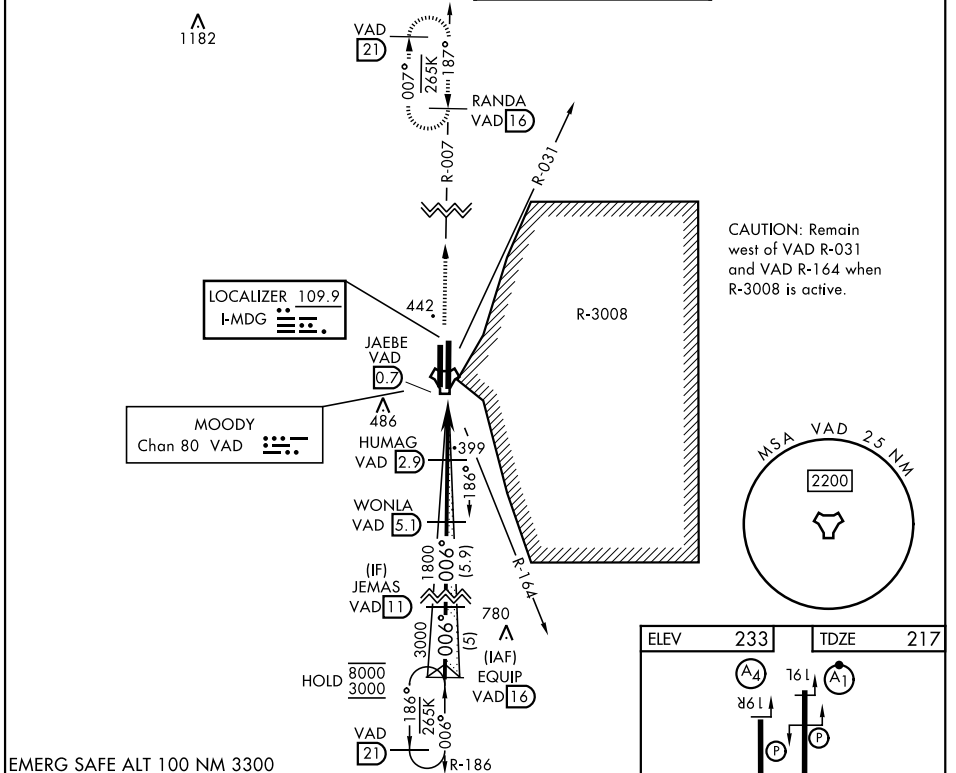
LOC I-MDG <b>109.9</b>	APCH CRS <b>006°</b>	Rwy Idg TDZE Arpt Elev <b>9300</b> <b>217</b> <b>233</b>
---------------------------	-------------------------	---

[USAF]

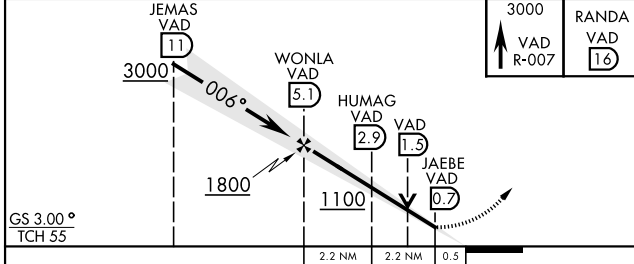
MOODY AFB (KVAD)

RADAR or DME required		ALSF-1 	MISSED APPROACH: Climb to 3000 on VAD TACAN R-007 to RANDA and hold.
▼ * When ALS inop, increase RVR to 40 and vis to 3/4 mile. ** When ALS inop, increase RVR CAT AB to 55 and vis to 1 mile, RVR CAT CDE vis to 1 3/8 miles.			

ATIS ★ <b>142.6 273.5</b>	VALDOSTA APP CON ★ <b>126.6 285.6</b>	TOWER ★ <b>128.45 (CTAF) 257.625</b>	GND CON <b>138.95 275.8</b>
------------------------------	--	---	--------------------------------



EMERG SAFE ALT 100 NM 3300



ELEV	233	TDZE	217
8002 x 150 8200 x 150 0.3% UP		16L 16R 0.3% UP	
HIRL all rwys 006°			
FAF to MAP 4.3 NM			
Knots	60	90	120 150 180
Min:Sec	4:18	2:52	2:09 1:43 1:26

CATEGORY	A	B	C	D	E
S-ILS 1R *	417/24		200	(200-1/2)	
S-LOC 1R **	660/24	443 (500-1/2)	660/45	443 (500-7/8)	
CIRCLING	760-1	527 (600-1)	800-1 1/2	567 (600-1 1/2)	800-2 567 (600-2)

# ILS Y or LOC Y RWY 1R

SE-4, 14 MAY 2026 to 11 JUN 2026

SE-4, 14 MAY 2026 to 11 JUN 2026