

VALDOSTA, GEORGIA

RNAV (GPS) RWY 1L

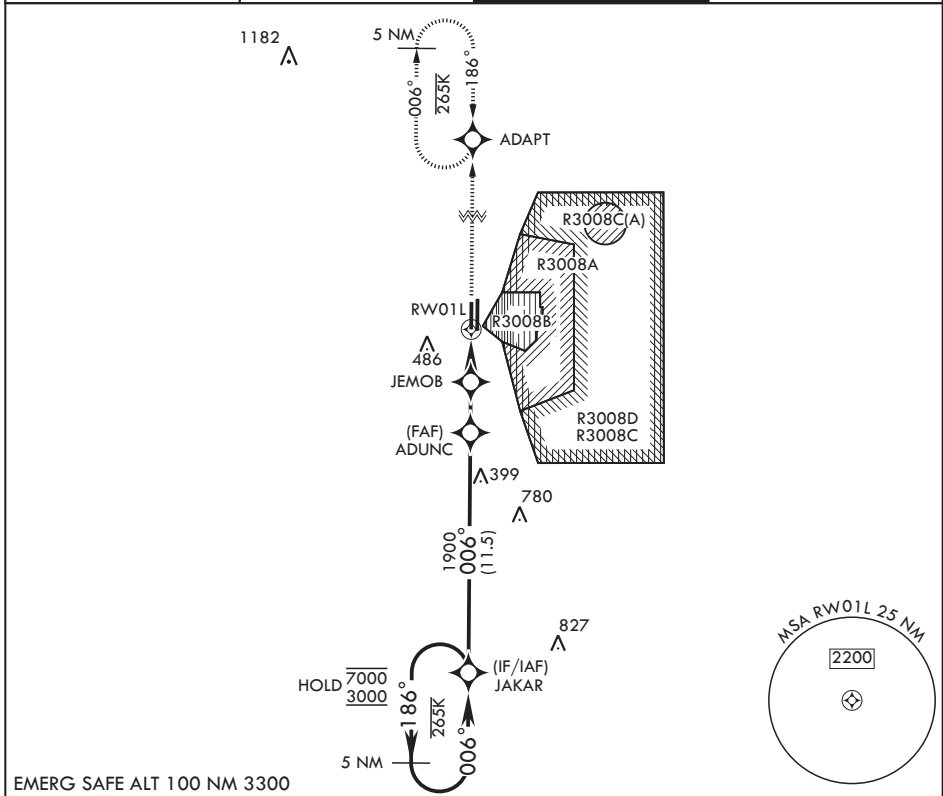
APCH CRS 006°	Rwy Idg 8002
	TDZE 225
	Arprt Elev 233

(USAF)

MOODY AFB (KVAD)

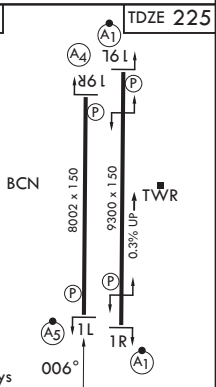
RNP APCH-GPS	MALSR 	MISSED APPROACH: Climb to 3000 direct ADAPT and hold.
<p>▼ * When ALS inop, increase CAT AB RVR to 55, vis to 1 mile; CAT CDE vis to 1 1/4 miles.</p>		

ATIS* 142.6 273.5	VALDOSTA APP CON* 126.6 285.6	TOWER* 128.45 (CTAF) 257.625	GND CON 138.95 275.8
----------------------	----------------------------------	---------------------------------	-------------------------



EMERG SAFE ALT 100 NM 3300

5 NM Holding Pattern JAKAR	3000	ADAPT	ELEV 233	TDZE 225	
7000 ← 186°	3000 → 006°	ADUNC	JEMOB	RWY 1L	
1900	1100	1.2 NM to RWY 1L	RWY 1L		
3.10° ≥ TCH 50	2.4 NM	2.5 NM			
CATEGORY	A	B	C	D	E
LNAV MDA*	660/40	435 (500-¾)	660/50	435	(500-1)
CIRCLING	760-1	527 (600-1)	800-1½ 567 (600-1½)	800-2	567 (600-2)
HIRL all rwys					



VALDOSTA, GEORGIA

30°58'N - 83°12'W

MOODY AFB (KVAD)

Orig 27NOV25

RNAV (GPS) RWY 1L

SE-4, 14 MAY 2026 to 11 JUN 2026

SE-4, 14 MAY 2026 to 11 JUN 2026