

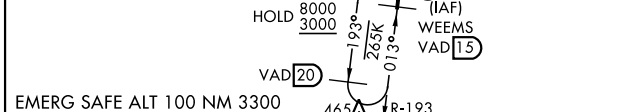
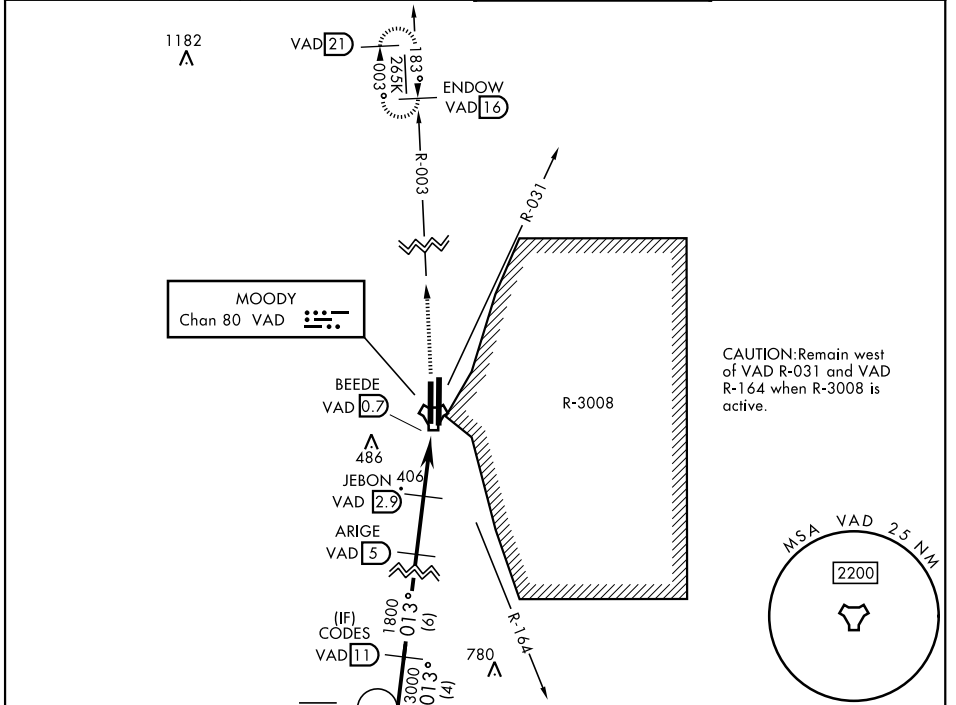
# TACAN Y RWY 1L

TACAN VAD Chan <b>80</b>	APCH CRS <b>013°</b>	Rwy ldg TDZE Arprt Elev <b>8002</b> <b>225</b> <b>233</b>	[USAF]	MOODY AFB (KVAD)
-----------------------------	-------------------------	--	--------	------------------

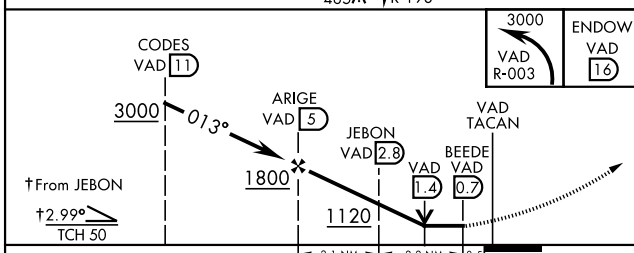
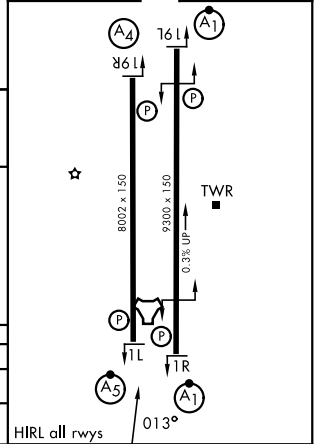
▼ \* When ALS inop, increase CAT AB RVR to 55 and vis to 1 mile, CAT CDE vis to 1¼ miles.

MALSR  MISSED APPROACH: Climb to 3000 on VAD TACAN R-003 to ENDOW and hold.

ATIS ★ <b>142.6 273.5</b>	VALDOSTA APP CON ★ <b>126.6 285.6</b>	TOWER ★ <b>128.45 (CTAF) 257.625</b>	GND CON <b>138.95 275.8</b>
------------------------------	--	---	--------------------------------



ELEV 233	TDZE 225
----------	----------



CATEGORY	A	B	C	D	E
S-1L*	660/40	435 (500-¾)	660/50	435 (500-1)	
CIRCLING	760-1	527 (600-1)	800-1½ 567 (600-1½)	800-2	567 (600-2)

# TACAN Y RWY 1L

SE-4, 14 MAY 2026 to 11 JUN 2026

SE-4, 14 MAY 2026 to 11 JUN 2026