

TACAN Y RWY 1R

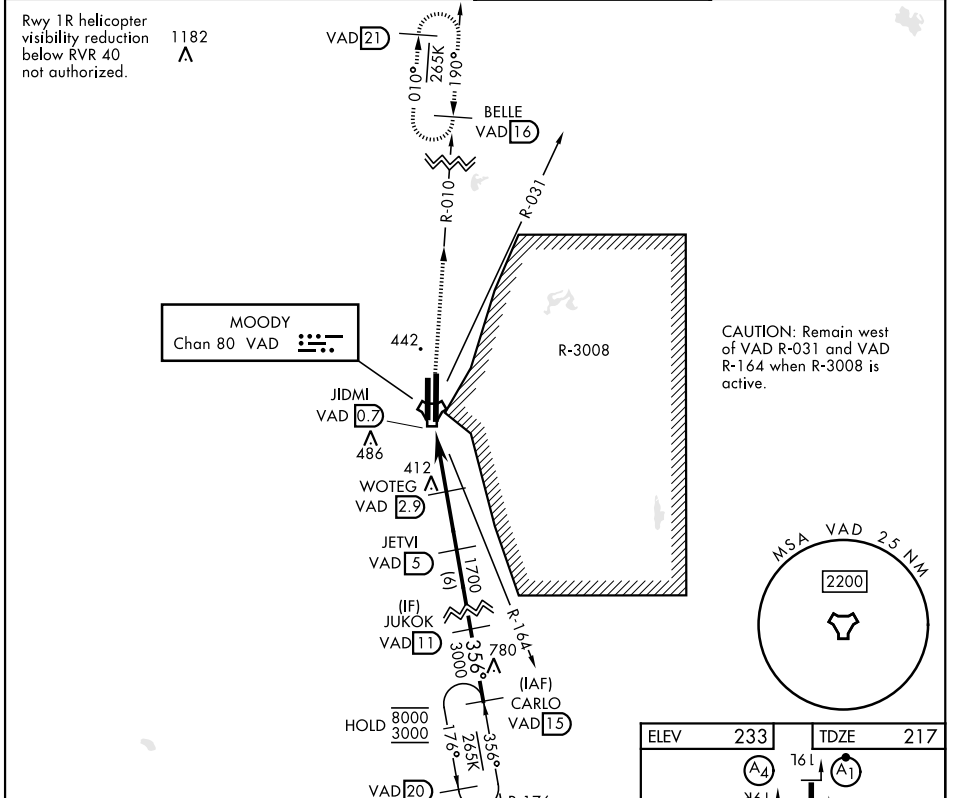
TACAN VAD Chan 80	APCH CRS 356°	Rwy ldg TDZE Arprt Elev 9300 217 233
-----------------------------	-------------------------	--

[USAF]

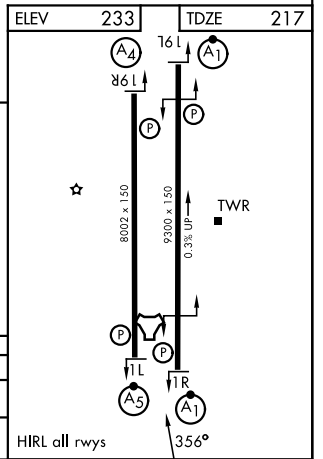
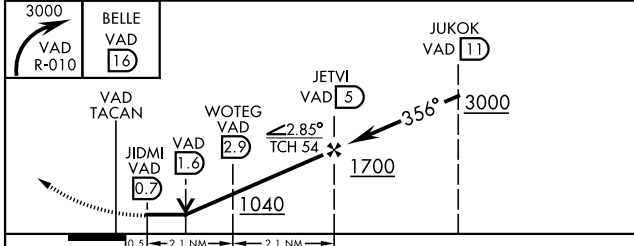
MOODY AFB (KVAD)

A1
ALSIF-1
*When ALS inop, increase CAT AB RVR to 55 and vis to 1 mile, CAT CDE vis to 1 1/8 miles.
MISSED APPROACH: Climb to 3000 on VAD TACAN R-010 to BELLE and hold.

ATIS ★ 142.6 273.5	VALDOSTA APP CON ★ 126.6 285.6	TOWER ★ 128.45 (CTAF) 257.625	GND CON 138.95 275.8
-------------------------------------	---	--	---------------------------------------



EMERG SAFE ALT 100 NM 3300



CATEGORY	A	B	C	D	E
S-1R*	680/40	463 (500-3/4)	680/50	463	(500-1)
CIRCLING	760-1	527 (600-1)	800-1 1/2 567 (600-1 1/2)	800-2	567 (600-2)

TACAN Y RWY 1R

SE-4, 14 MAY 2026 to 11 JUN 2026

SE-4, 14 MAY 2026 to 11 JUN 2026