

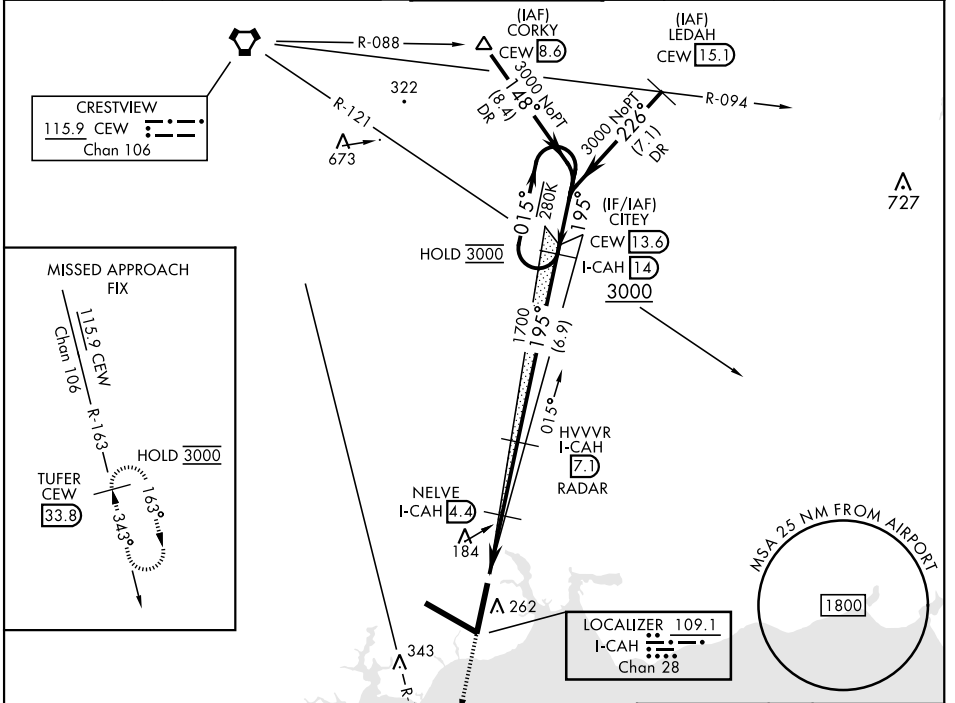
VALPARAISO DESTIN FT WALTON BEACH, FLORIDA

ILS or LOC Z RWY 20

LOC/DME I-CAH 109.1 Chan 28	APCH CRS 195°	Rwy Idg 10,012 TDZE 62 Arprt Elev 84
---	-------------------------	---

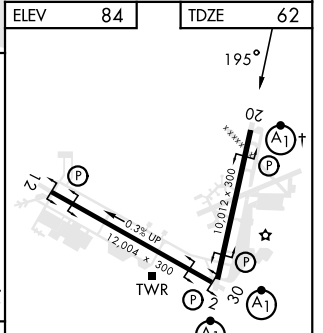
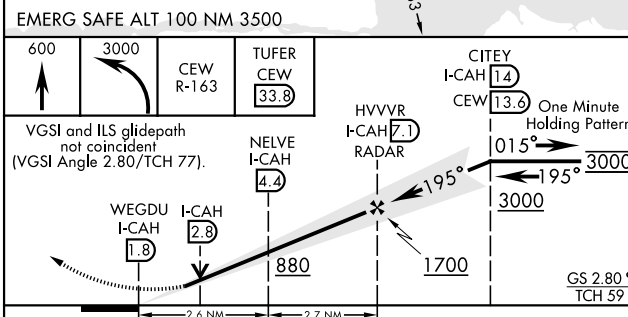
[USAF] EGLIN AFB DESTIN FORT WALTON BEACH (KVPS)

DME required		ALSF-1 	MISSED APPROACH: Climb to 600, then climbing left turn to 3000 on CEW VORTAC R-163 to TUFER/33.8 DME and hold.	
* When ALS inop increase RVR to 40, vis to 3/4 mile. ** When ALS inop increase RVR to 55, vis to 1 mile.				
ATIS ★ 134.625 273.5	APP CON 125.1 281.45 271°-089° 132.1 360.6 090°-270°	TOWER 118.2 353.65	GND CON 121.8 335.8	CLNC DEL 127.7 377.2



SE-3, 14 MAY 2026 to 11 JUN 2026

SE-3, 14 MAY 2026 to 11 JUN 2026



EMERG SAFE ALT 100 NM 3500	600	3000	CEW R-163	TUFER CEW 33.8	CITEY I-CAH 14	HVVVR I-CAH 7.1	NELVE I-CAH 4.4	WEGDU I-CAH 1.8	I-CAH 2.8	880	1700	3000	3000
VGSI and ILS glidepath not coincident (VGSI Angle 2.80/TCH 77).													
One Minute Holding Pattern													
GS 2.80° TCH 59°													
CATEGORY	A	B	C	D	E								
S-ILS 20 *	262/24			200	(200-1/2)								
S-LOC 20 **	440/24	378	(400-1/2)	440/35	378	(400-3/4)							
Ⓢ CIRCLING	600-1	516	(600-1)	680-1 1/2	596	(600-1 1/2)	680-2	596	(600-2)	700-2 1/4	616	(700-2 1/4)	

ELEV	84	TDZE	62		
† Rwy 20 apch lgt 1500' nonstandard.					
HIRL all rwys					
FAF to MAP 5.3 NM					
Knots	60	90	120	150	180
Min:Sec	5:18	3:32	2:39	2:07	1:46

VALPARAISO DESTIN FT WALTON BEACH, FLORIDA
Orig 16MAY24

EGLIN AFB DESTIN FORT WALTON BEACH (KVPS)
30°29'N-86°32'W

ILS or LOC Z RWY 20