

ILS or LOC Z RWY 30

[USAF] EGLIN AFB DESTIN FORT WALTON BEACH(KVPS)

LOC/DME I-VPS 109.1 Chan 28	APCH CRS 303°	Rwy Idg 12,004 TDZE 68 Arprt Elev 84
---	-------------------------	---

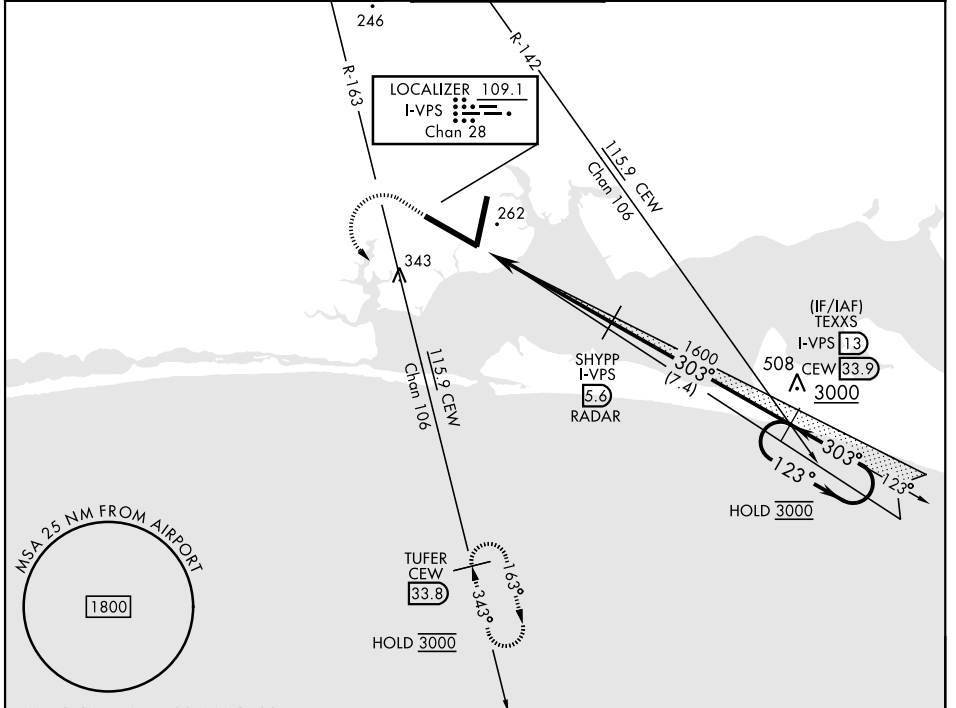
DME required

*When ALS inop, increase RVR to 40, vis to 3/4 mile.
 **When ALS inop increase CAT AB RVR to 55, vis to 1 mile;
 CAT CDE RVR to 50, vis to 1 mile.

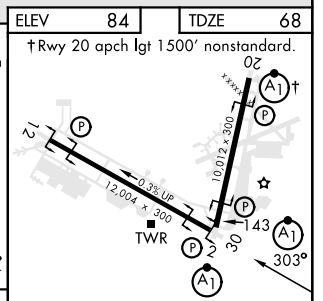
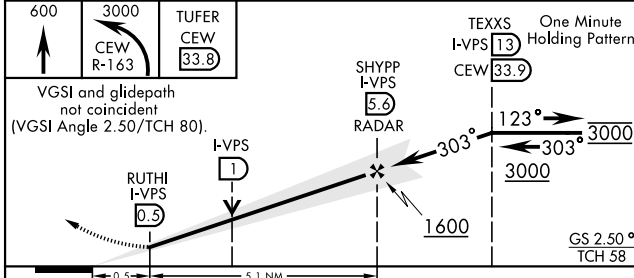
ALSF-1

MISSED APPROACH: Climb to 600, then climbing left turn to 3000 on CEW VORTAC R-163 to TUFER/33.8 DME and hold.

ATIS ★ 134.625 273.5	APP CON 125.1 281.45 271°-089° 132.1 360.6 090°-270°	TOWER 118.2 353.65	GND CON 121.8 335.8	CLNC DEL 127.7 377.2
--------------------------------	--	------------------------------	-------------------------------	--------------------------------



EMERG SAFE ALT 100 NM 3500



CATEGORY	A	B	C	D	E
S-ILS 30 *	268/24		200	(200-1/2)	
S-LOC 30 **	400/24	332 (400-1/2)	400/26	332	(400-1/2)
CIRCLING	600-1	516 (600-1)	680-1 1/2 596 (600-1 1/2)	680-2 596 (600-2)	700-2 1/4 616 (700-2 1/4)

ELEV	84	TDZE	68
†Rwy 20 apch lgt 1500' nonstandard.			
HIRL all rwys			
FAF to MAP 5.1 NM			
Knots	60	90	120 150 180
Min:Sec	5:06	3:24	2:33 2:02 1:42

ILS or LOC Z RWY 30

SE-3, 14 MAY 2026 to 11 JUN 2026

SE-3, 14 MAY 2026 to 11 JUN 2026