

VALPARAISO DESTIN FT WALTON BEACH, FLORIDA

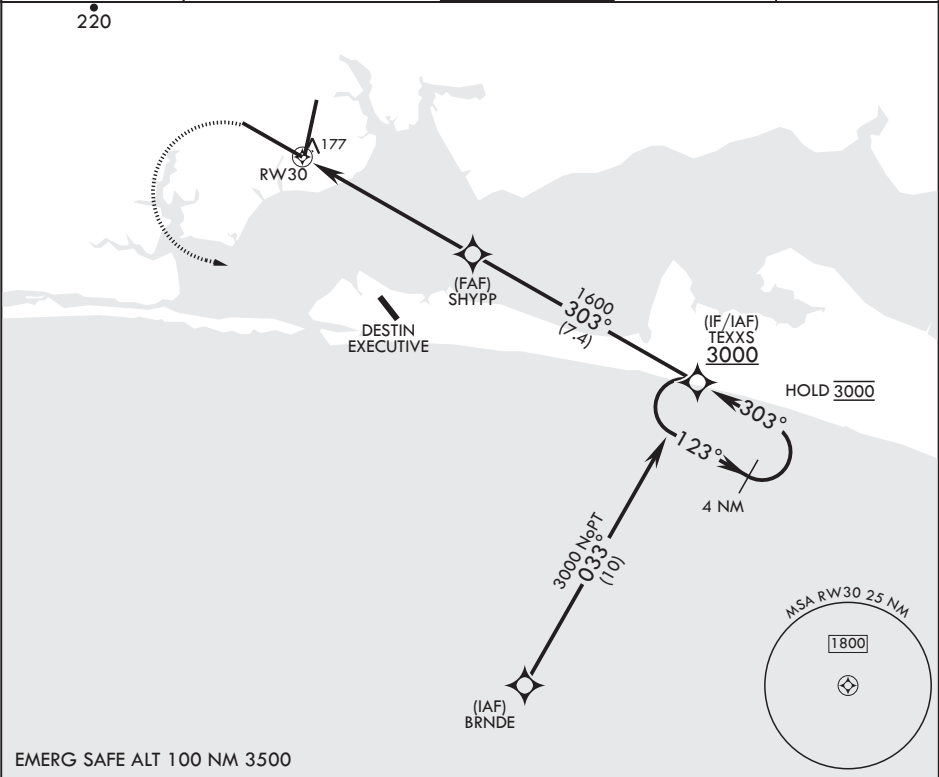
# RNAV (GPS) RWY 30

APCH CRS <b>303°</b>	Rwy Idg TDZE Arprt Elev	<b>12,004</b> <b>68</b> <b>84</b>
-------------------------	-------------------------------	-----------------------------------------

- (USAF) EGLIN AFB DESTIN FORT WALTON BEACH (KVPS)

RNP APCH - GPS	ALSF-1	MISSED APPROACH: Climb to 600 then climbing left turn to 3000 direct TEXXS and hold.
* When ALS inop increase CAT AB RVR to 55, vis to 1 mile; CAT CDE vis to 1 1/4 miles.		

ATIS* <b>134.625 273.5</b>	APP CON/DEP CON <b>125.1 281.45 271°-089°</b> <b>132.1 360.6 090°-270°</b>	TOWER <b>118.2 353.65</b>	GND CON <b>121.8 335.8</b>	CLNC DEL <b>127.7 377.2</b>
-------------------------------	----------------------------------------------------------------------------------	------------------------------	-------------------------------	--------------------------------



SE-3, 14 MAY 2026 to 11 JUN 2026

SE-3, 14 MAY 2026 to 11 JUN 2026

EMERG SAFE ALT 100 NM 3500

			VGSI and descent angle not coincident (VGSI angle 2.5° TCH 80 ft).	4 NM Holding Pattern	ELEV 84	TDZE 68
					† Rwy 20 apch lgt 1500' nonstandard.	
CATEGORY	A	B	C	D	E	
RNAV MDA*	500/24	432 (500-½)	500/40	432	(500-¾)	
	600-1	516 (600-1)	680-1½ 596 (600-1½)	680-2 596 (600-2)	700-2¼ 616 (700-2¼)	HIRL all Rwys

VALPARAISO DESTIN FT WALTON BEACH, FLORIDA

EGLIN AFB DESTIN FORT WALTON BEACH (KVPS)

Amdt 1 16MAY24

30°29'N - 86°32'W

# RNAV (GPS) RWY 30