

WAAS CH <b>53511</b> <b>W12A</b>	APP CRS <b>118°</b>	Rwy Ldg TDZE Apt Elev	<b>7314</b> <b>23</b> <b>24</b>
--	------------------------	-----------------------------	---------------------------------------

# RNAV (GPS) RWY 12R

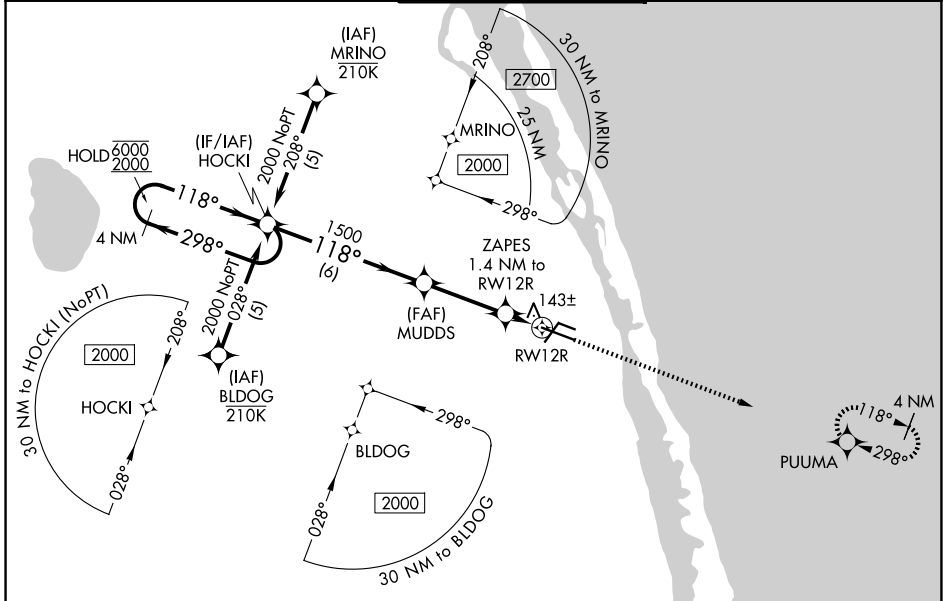
VERO BEACH RGNL (VRB)

RNP APCH - GPS.

**▲** For uncompensated Baro-VNAV systems, LNAV/VNAV NA below 1°C or above 54°C.  
Circling Rwy 12L, 30R NA at night.

MISSED APPROACH:  
Climb to 2000 direct  
PUUMA and hold.

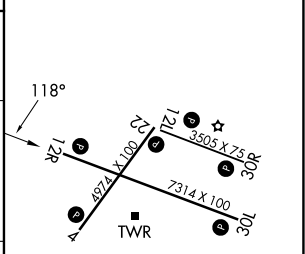
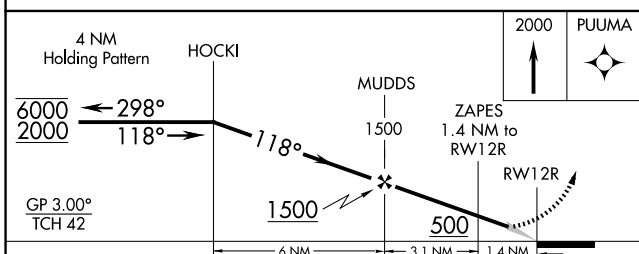
ATIS <b>120.575</b>	PALM BEACH APP CON <b>123.625 225.4 (N)</b>	<b>VERO BEACH TOWER ★</b> <b>126.3 (CTAF) 0</b>	GND CON <b>127.45</b>	UNICOM <b>122.95</b>
------------------------	--	--	--------------------------	-------------------------



SE-3, 14 MAY 2026 to 11 JUN 2026

SE-3, 14 MAY 2026 to 11 JUN 2026

ELEV 24	<b>D</b>	TDZE 23
---------	----------	---------



CATEGORY	A	B	C	D
LPV DA		279-3/4	256 (300-3/4)	
LNAV/VNAV DA		400-1	377 (400-1)	
LNAV MDA		400-1	377 (400-1)	
CIRCLING	560-1 536 (600-1)		660-1 3/4 636 (700-1 3/4)	820-2 1/2 796 (800-2 1/2)

MIRL Rwy 4-22, 12R-30L, and 12L-30R  
REIL Rwy 4, 12R, 22 and 30L