

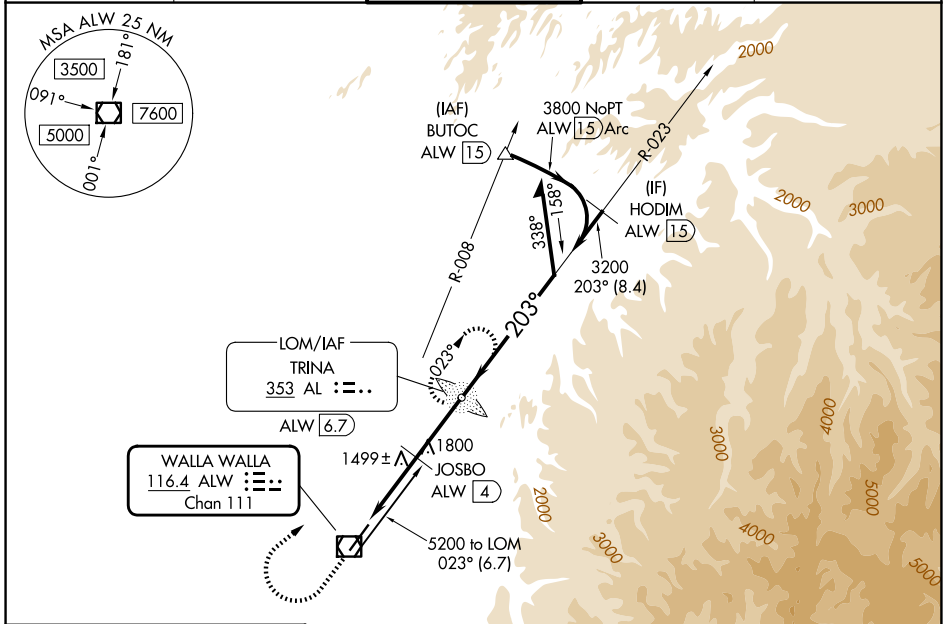
VOR/DME ALW 116.4 Chan 111	APP CRS 203°	Rwy Ldg 6527 TDZE 1194 Apt Elev 1194
------------------------------------------------	------------------------	-----------------------------------------------------------------

VOR RWY 20

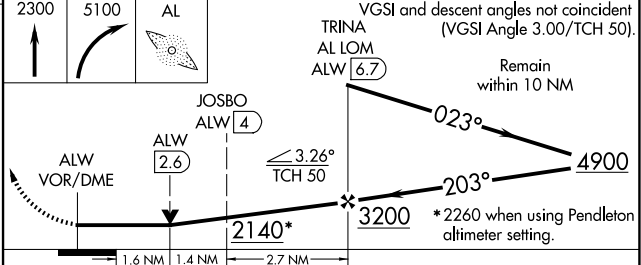
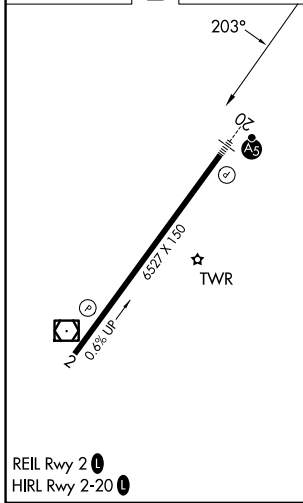
WALLA WALLA RGNL (ALW)

ADF required.	MALSR	MISSED APPROACH: Climb to 2300 then climbing right turn to 5100 direct TRINA LOM/ALW 6.7 DME and hold, continue climb-in-hold to 5100.
<p>▼</p> <p>▲ NA For inop ALS, increase JOSBO fix minimums S-20 Cats C/D visibility to 1 3/8 SM.</p>		

ASOS 135.875	SPOKANE APP CON* 133.15 379.15	WALLA WALLA TOWER* 118.5 (CTAF) 289.4	GND CON 121.6 289.4	UNICOM 122.95
------------------------	------------------------------------------	-------------------------------------------------	-------------------------------	-------------------------



ELEV 1194	D	TDZE 1194
-----------	----------	-----------



CATEGORY	A	B	C	D
S-20	2140/40	946 (1000-3/4)	2140-2	946 (1000-2)
CIRCLING	2140-1 1/4	946 (1000-1 1/4)	2140-2 3/4 946 (1000-2 3/4)	2300-3 1106 (1200-3)
JOSBO FIX MINIMUMS (DME REQUIRED)				
S-20	1760/24	566 (600-1/2)	1760-1 1/4	566 (600-1 1/4)
CIRCLING	1760-1 566 (600-1)	1820-1 626 (700-1)	2120-2 3/4 926 (1000-2 3/4)	2300-3 1106 (1200-3)

NW-1, 14 MAY 2026 to 11 JUN 2026

NW-1, 14 MAY 2026 to 11 JUN 2026