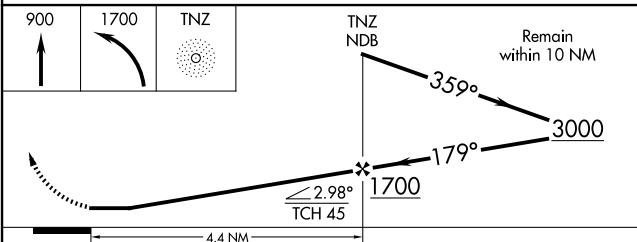
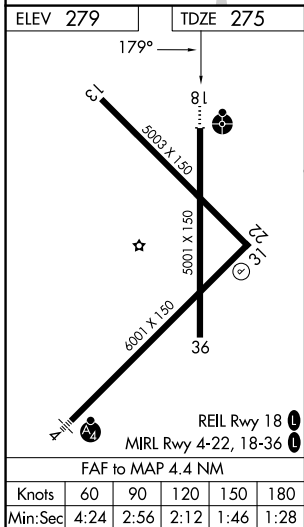
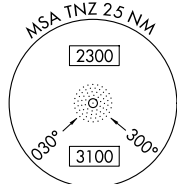
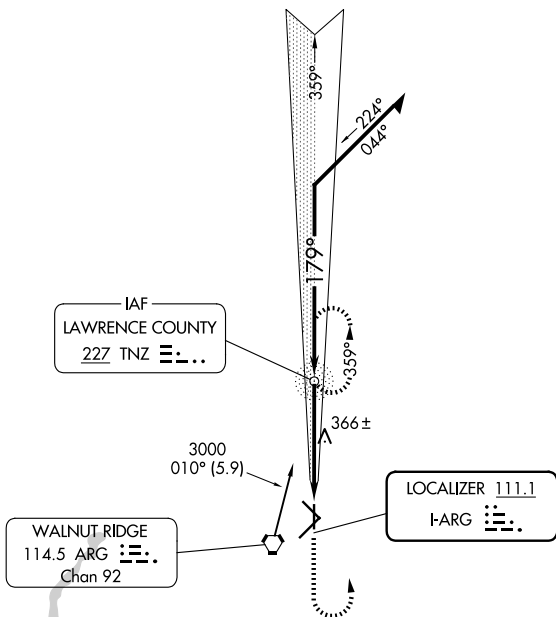


LOC I-ARG <b>111.1</b>	APP CRS <b>179°</b>	Rwy Ldg TDZE Apt Elev	<b>5001</b> <b>275</b> <b>279</b>
---------------------------	------------------------	-----------------------------	---

# LOC RWY 18

WALNUT RIDGE RGNL (ARG)

ADF required.		ODALS 	MISSED APPROACH: Climb to 900 then climbing left turn to 1700 direct TNZ NDB and hold.
Inop table does not apply to S-18 Cat D.			
AWOS-3PT <b>126.525</b>	MEMPHIS CENTER <b>120.075 289.4</b>	UNICOM <b>122.8 (CTAF) 0</b>	



CATEGORY	A	B	C	D
S-18	620-3/4	345 (400-3/4)	620-7/8 345 (400-7/8)	620-1 1/4 345 (400-1 1/4)
CIRCLING	760-1	481 (500-1)	800-1 1/2 521 (600-1 1/2)	1000-2 1/4 721 (800-2 1/4)

SC-1, 14 MAY 2026 to 11 JUN 2026

SC-1, 14 MAY 2026 to 11 JUN 2026