

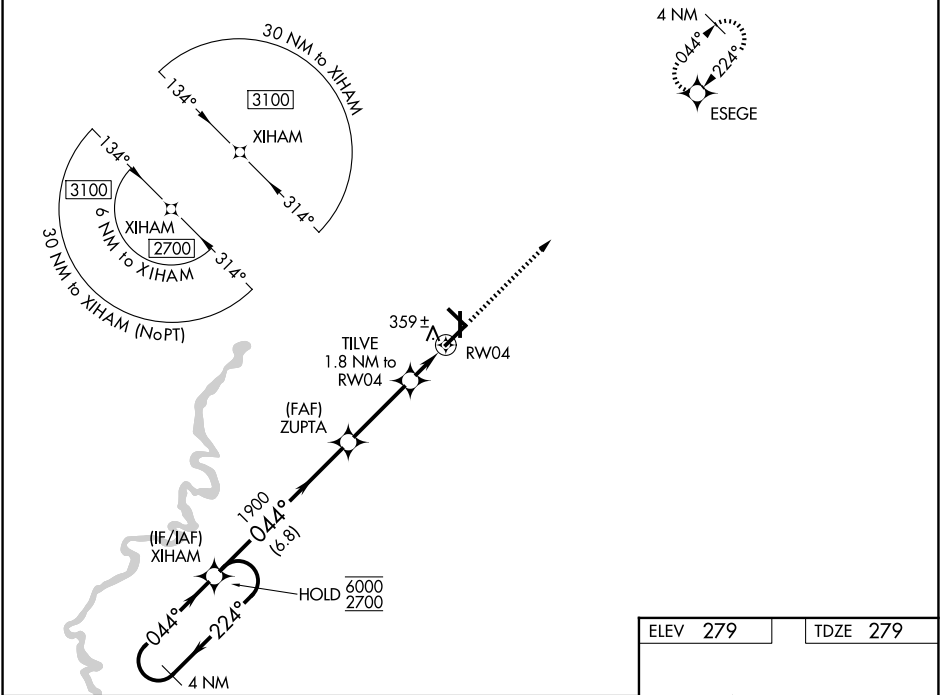
WAAS CH <b>77825</b> <b>W04A</b>	APP CRS <b>044°</b>	Rwy Ldg TDZE Apt Elev	<b>6001</b> <b>279</b> <b>279</b>
--	------------------------	-----------------------------	---

# RNAV (GPS) RWY 4

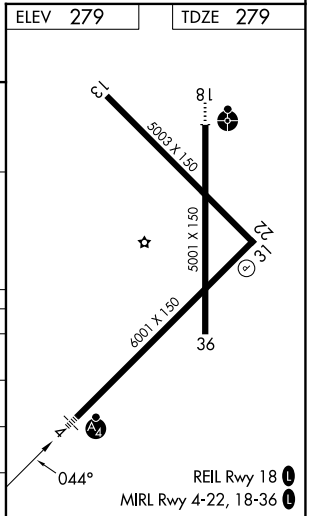
WALNUT RIDGE RGNL (A.R.G)

RNP APCH - GPS.	MALSF	MISSED APPROACH: Climb to 2700 direct ESEGE and hold.
<p><b>⚠</b> For uncompensated Baro-VNAV systems, LNAV/VNAV NA below -1.5°C or above 54°C. For inop ALS, increase LNAV Cat C/D visibility to 1½ SM. Inop table does not apply to LPV and LNAV/VNAV all Cats.</p>		

AWOS-3PT <b>126.525</b>	MEMPHIS CENTER <b>120.075 289.4</b>	UNICOM <b>122.8 (CTAF) 0</b>
----------------------------	--	---------------------------------



4 NM Holding Pattern	XIHAM	ZUPTA	TILVE	2700	ESEGE
6000 ← 224°		1900	1.8 NM to RW04	↑	⬠
2700 → 044°		900	0.9 NM to RW04		
GP 3.00°					
TCH 45					
	6.8 NM	3.1 NM	0.9	0.9	
CATEGORY	A	B	C	D	
LPV DA		529-¾	250 (300-¾)		
LNAV/VNAV DA		529-¾	250 (300-¾)		
LNAV MDA		620-¾	341 (400-¾)		
CIRCLING	840-1	561 (600-1)	840-1½ 561 (600-1½)	1000-2¼ 721 (800-2¼)	



SC-1, 14 MAY 2026 to 11 JUN 2026

SC-1, 14 MAY 2026 to 11 JUN 2026