

HI-ILS or LOC Z RWY 15

LOC I-RJM 111.7	APCH CRS 146°	Rwy ldg 12,001 TDZE 294 Arpt Elev 294
---------------------------	-------------------------	--

[USAF]

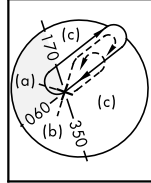
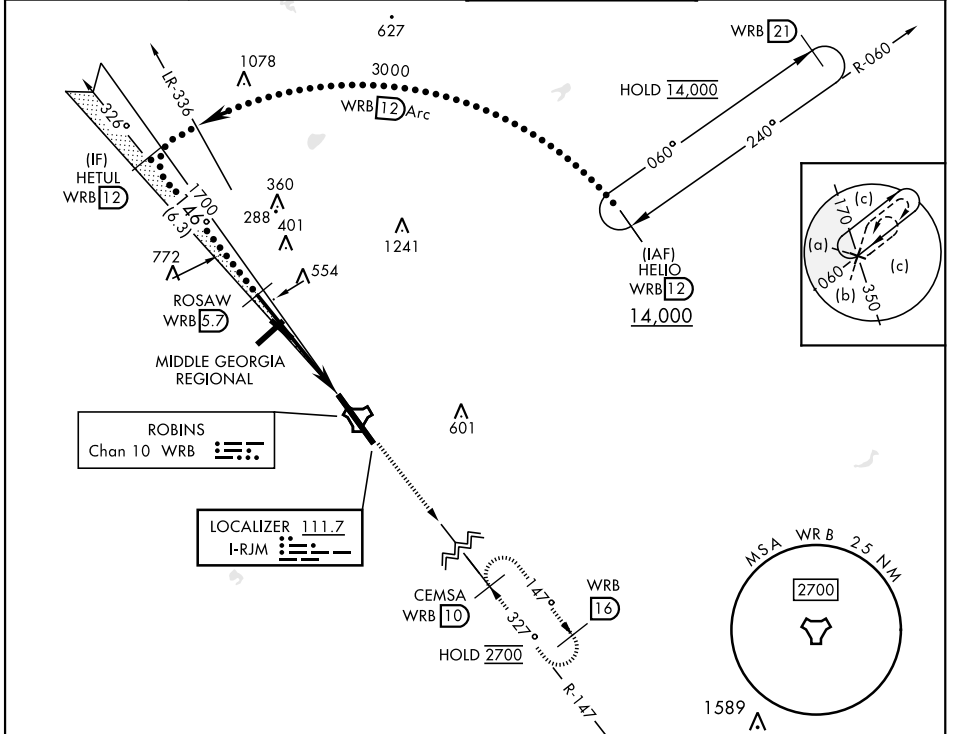
ROBINS AFB (KWRB)

* When ALS inop, increase RVR to 40, vis to 3/4 mile.
 ** When ALS inop, increase vis to 1 1/2 miles.
 *** Circling not authorized SW of Rwy 15-33.



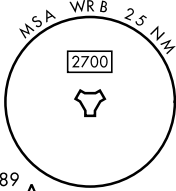
MISSED APPROACH: Climb To 2700 on WRB TACAN R-147 to CEMSA and hold.

ATIS 119.475 273.475	ATLANTA APP CON 124.2 279.6	TOWER 133.225 257.975	GND CON 121.85 275.8
--------------------------------	---------------------------------------	---------------------------------	--------------------------------

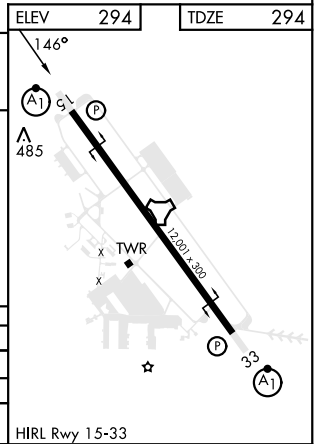
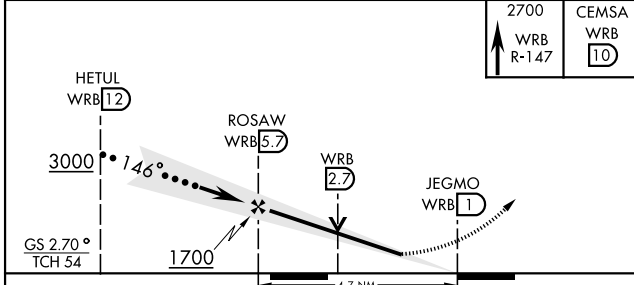


ROBINS
Chan 10 WRB

LOCALIZER 111.7
I-RJM



EMERG SAFE ALT 100 NM 3700	ELEV 294	TDZE 294
----------------------------	----------	----------



CATEGORY	C	D	E
S-ILS 15*	494/24	200	(200-1/2)
S-LOC 15**	840/60	546	(600-1 1/2)
***	880-1 1/2	960-2	1040-2 3/4
CIRCLING	586 (600-1 1/2)	666 (700-2)	746 (800-2 3/4)

HIRL Rwy 15-33

HI-ILS or LOC Z RWY 15

SE-4, 14 MAY 2026 to 11 JUN 2026

SE-4, 14 MAY 2026 to 11 JUN 2026