


HI-TACAN Z RWY 33

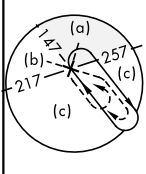
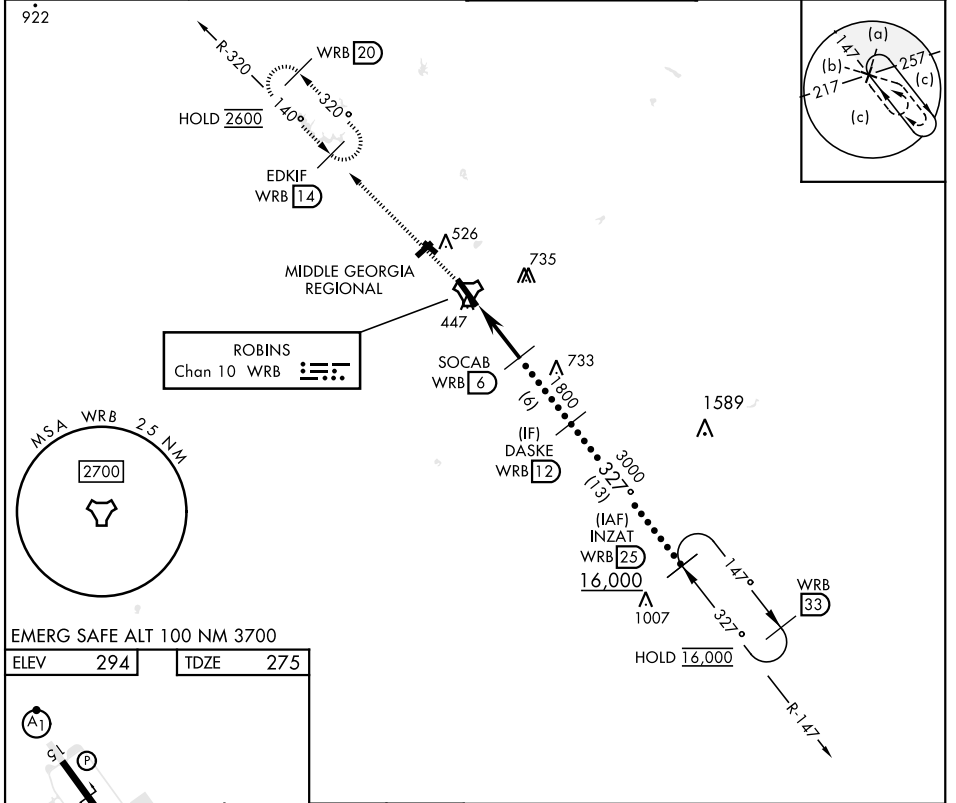
TACAN WRB Chan 10	APCH CRS 327°	Rwy ldg 12,001 TDZE 275 Arprt Elev 294	[USAF]	ROBINS AFB (KWRB)
-----------------------------	-------------------------	---	--------	-------------------

* When ALS inop, increase CAT CDE vis to 1 3/8 miles.
 ** Circling NA SW of Rwy 15-33.

ALSF-1 

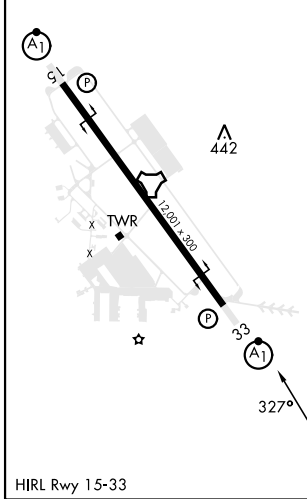
MISSED APPROACH: Climb To 2600 on WRB TACAN R-320 to EDKIF and hold.

ATIS 119.475 273.475	ATLANTA APP CON 124.2 279.6	TOWER 133.225 257.975	GND CON 121.85 275.8
--------------------------------	---------------------------------------	---------------------------------	--------------------------------



EMERG SAFE ALT 100 NM 3700

ELEV	294	TDZE	275
------	-----	------	-----



2600	EDKIF WRB 14	INZAT WRB 25
WRB R-320		
TACAN	SOCAB WRB 6	DASKE WRB 12
CAPMI WRB 1	WRB 2,3	
	1800	3000
		16,000
	5 NM	
2.77°	TCH 55	
327°		

CATEGORY	C	D	E
S-33*	720/45	445	(500- 7/8)
CIRCLING**	880-1 1/2	960-2	1040-2 3/4
	586 (600-1 1/2)	666 (700-2)	746 (800-2 3/4)

HI-TACAN Z RWY 33

SE-4, 14 MAY 2026 to 11 JUN 2026

SE-4, 14 MAY 2026 to 11 JUN 2026