

WARNER ROBINS, GEORGIA

RNAV (GPS) RWY 33

APCH CRS 326°	Rwy Idg TDZE Arprt Elev	12,001 275 294
-------------------------	-------------------------------	---

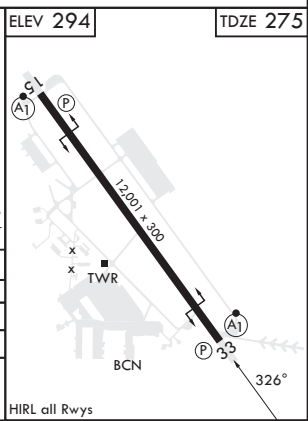
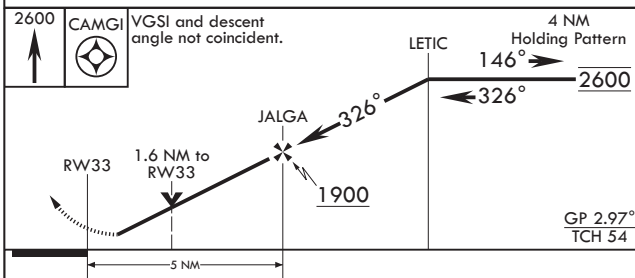
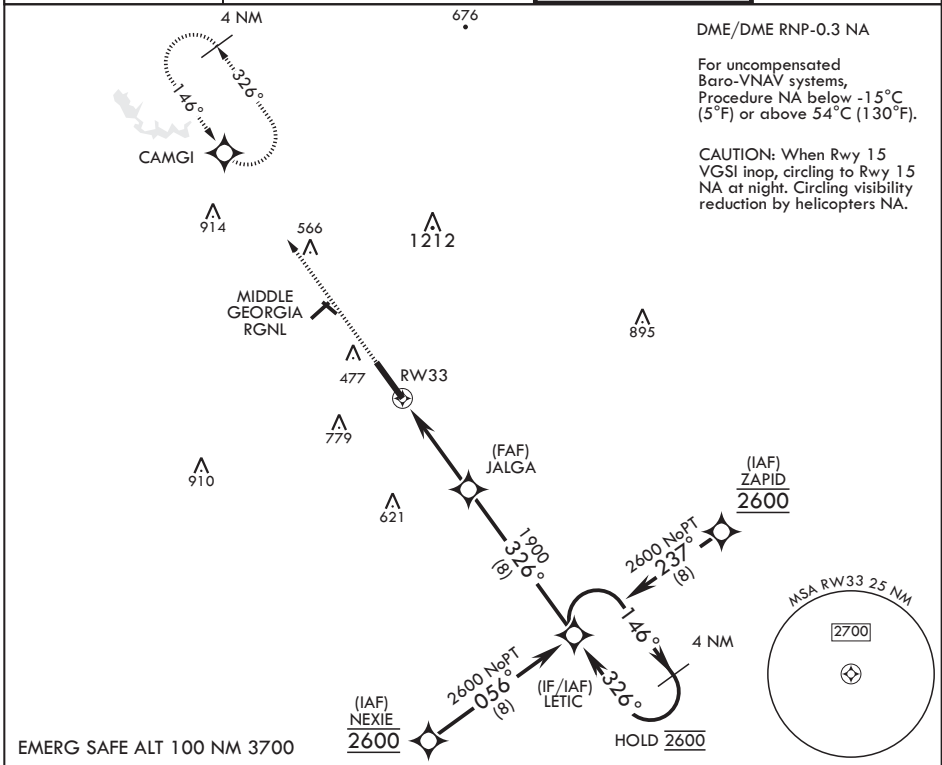
- (USAF)


ROBINS AFB (KW RB)

* When ALS inop increase CAT ABCDE vis to 1 7/8 miles.
 ** When ALS inop, increase CAT AB RVR to 55, vis to 1 mile, CAT CDE vis to 1 3/8.
 *** Circling NA SW of RWY 33-15.

ALS-1  MISSED APPROACH: Climb to 2600 direct CAMGI and hold.

ATIS 119.475 273.475	ATLANTA APP CON/DEP CON 124.2 279.6	TOWER 133.225 257.975	GND CON 121.85 275.8
--------------------------------	---	---------------------------------	--------------------------------



CATEGORY	A	B	C	D	E
LNAV/VNAV DA*	820-1 ³ / ₈		545	(600-1 ³ / ₈)	
LNAV MDA**	760/24	485 (500-1/2)	760/50	485	(500-1)
 CIRCLING***	820-1 ³ / ₈	486 (600-1 ³ / ₈)	840-1 ¹ / ₂ 546 (600-1 ¹ / ₂)	960-2 666 (700-2)	1100-2 ³ / ₄ 806 (900-2 ³ / ₄)

WARNER ROBINS, GEORGIA

32°38'N - 83°36'W

ROBINS AFB (KW RB)

Amdt 5 20MAY21

RNAV (GPS) RWY 33

SE-4, 14 MAY 2026 to 11 JUN 2026

SE-4, 14 MAY 2026 to 11 JUN 2026