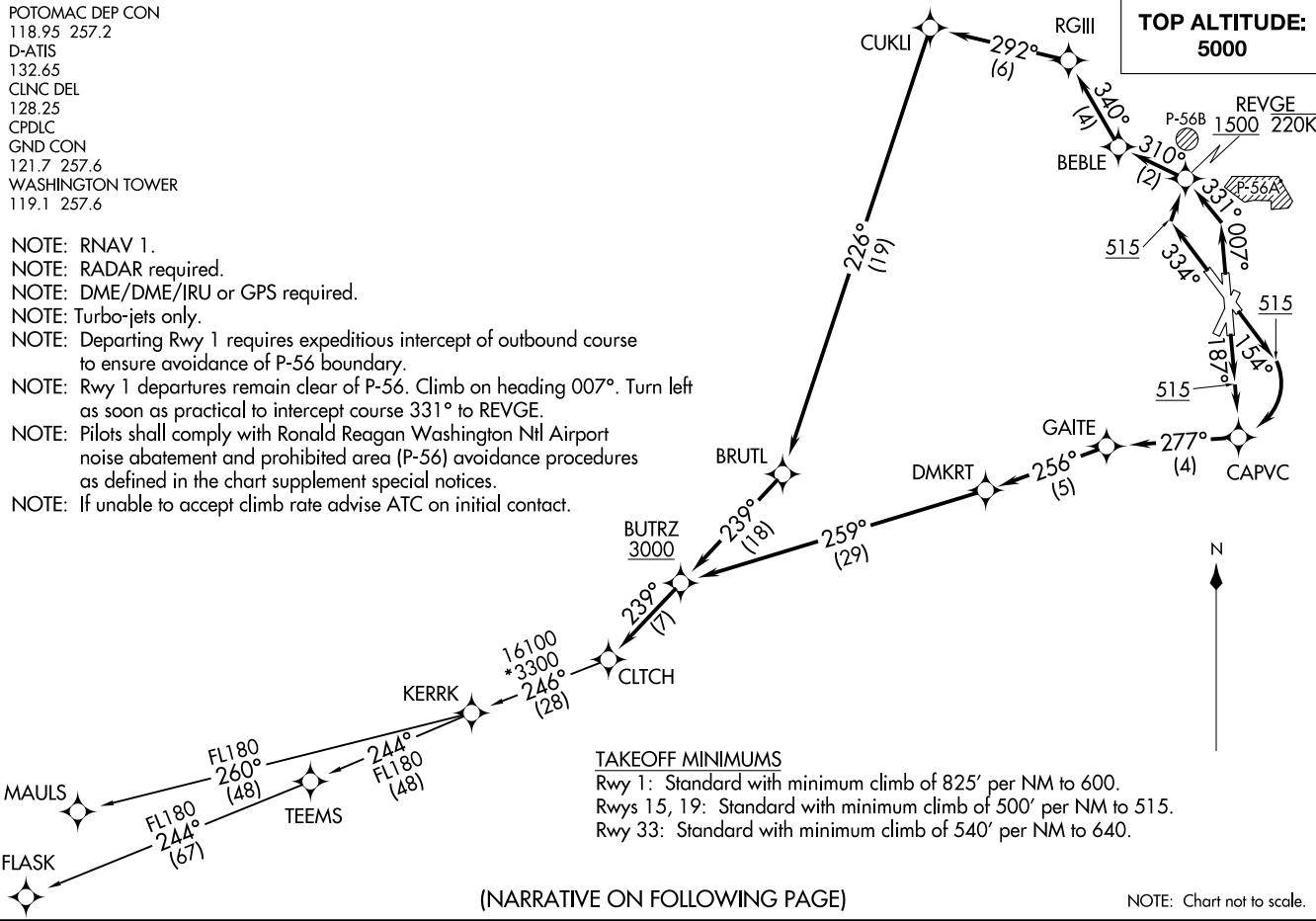


CLTCH THREE DEPARTURE (RNAV)
(CLTCH3 CLTCH) 31DEC20

POTOMAC DEP CON
118.95 257.2
D-ATIS
132.65
CLNC DEL
128.25
CPDLC
GND CON
121.7 257.6
WASHINGTON TOWER
119.1 257.6

- NOTE: RNAV 1.
- NOTE: RADAR required.
- NOTE: DME/DME/IRU or GPS required.
- NOTE: Turbo-jets only.
- NOTE: Departing Rwy 1 requires expeditious intercept of outbound course to ensure avoidance of P-56 boundary.
- NOTE: Rwy 1 departures remain clear of P-56. Climb on heading 007°. Turn left as soon as practical to intercept course 331° to REVGE.
- NOTE: Pilots shall comply with Ronald Reagan Washington Ntl Airport noise abatement and prohibited area (P-56) avoidance procedures as defined in the chart supplement special notices.
- NOTE: If unable to accept climb rate advise ATC on initial contact.

WASHINGTON, DC
RONALD REAGAN WASHINGTON NTL (DCA)



CLTCH3 CLTCH) 24193
CLTCH THREE DEPARTURE (RNAV)

AL-443 (FAA)
RONALD REAGAN WASHINGTON NTL (DCA)
WASHINGTON, DC

(NARRATIVE ON FOLLOWING PAGE)

NOTE: Chart not to scale.



DEPARTURE ROUTE DESCRIPTION

TAKEOFF RUNWAY 1: Climb on heading 007° to intercept course 331° to REVGE, cross REVGE at or above 1500 and at or below 220K, then on track 310° to BEBLE, then on track 340° to RGIII, then on track 292° to CUKLI, then on track 226° to BRUTL, then on track 239° to BUTRZ, cross BUTRZ at or above 3000, then on track 239° to CLTCH, thence

TAKEOFF RUNWAY 15: Climb on heading 154° to 515, then right turn direct CAPVC, then on track 277° to GAITE, then on track 256° to DMKRT, then on track 259° to BUTRZ, cross BUTRZ at or above 3000, then on track 239° to CLTCH, thence

TAKEOFF RUNWAY 19: Climb on heading 187° to 515, then direct CAPVC, then on track 277° to GAITE, then on track 256° to DMKRT, then on track 259° to BUTRZ, cross BUTRZ at or above 3000, then on track 239° to CLTCH, thence

TAKEOFF RUNWAY 33: Climb on heading 334° to 515, then direct REVGE, cross REVGE at or above 1500 and at or below 220K, then on track 310° to BEBLE, then on track 340° to RGIII, then on track 292° to CUKLI, then on track 226° to BRUTL, then on track 239° to BUTRZ, cross BUTRZ at or above 3000, then on track 239° to CLTCH, thence

. . . . on assigned transition. Maintain 5000. Expect clearance to filed altitude within ten (10) minutes after departure.

FLASK TRANSITION (CLTCH3.FLASK)

MAULS TRANSITION (CLTCH3.MAULS)

NE-3, 14 MAY 2026 to 11 JUN 2026

NE-3, 14 MAY 2026 to 11 JUN 2026