

LOC/DME I-DCA 109.9 Chan 36	APP CRS 007°	Rwy Ldg 6869 TDZE 14 Apt Elev 14
---	------------------------	---

ILS or LOC RWY 1

RONALD REAGAN WASHINGTON NTL (DCA)

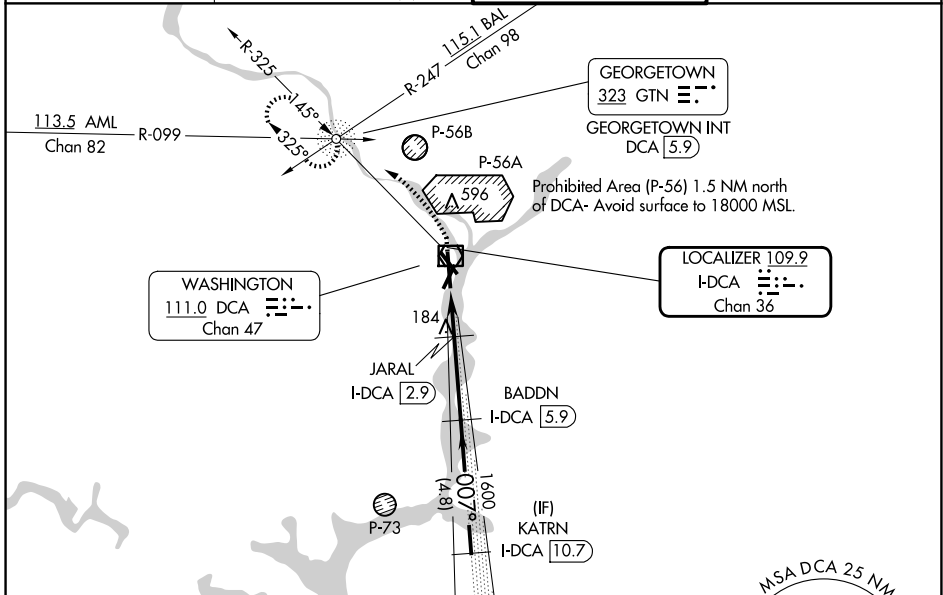
DME required. RADAR required for procedure entry.

⚠ Circling NA northeast of Rwy 15-33.
⚠ For inop ALS, increase S-LOC 1 Cats C and D visibility to 1½ SM.
Circling NA to Rwy 4.

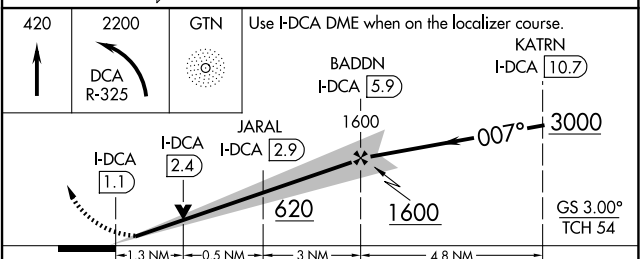
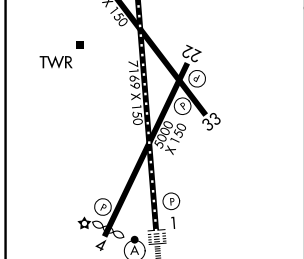
ALSF-2

MISSED APPROACH: Climb to 420 then climbing left turn to 2200 on DCA VOR/DME R-325 to GTN NDB/INT/DCA 5.9 DME and hold.

D-ATIS 132.65	POTOMAC APP CON 119.85 239.25 (W/S) 124.2 360.8 (E)	WASHINGTON TOWER 119.1 257.6	GND CON 121.7 257.6
-------------------------	---	--	-------------------------------



ELEV 14	D	TDZE 14
REIL Rwys 4, 15, 22 and 33 MIRL Rwy 4-22 and 15-33 HIRL Rwys 1-19 TDZ/CL Rwy 1		



CATEGORY	A	B	C	D
S-ILS 1	214/18 200 (200-½)			
S-LOC 1	480/24	466 (500-½)	480/50	466 (500-1)
CIRCLING	720-1	900-1¼	900-2¾	900-3
	706 (800-1)	886 (900-1¼)	886 (900-2¾)	886 (900-3)

FAF to MAP 4.8 NM					
Knots	60	90	120	150	180
Min:Sec	4:48	3:12	2:24	1:55	1:36

NE-3, 14 MAY 2026 to 11 JUN 2026

NE-3, 14 MAY 2026 to 11 JUN 2026