

LOC/DME I-VVWH <b>111.35</b> Chan <b>50 (Y)</b>	APP CRS <b>147°</b>	Rwy Ldg TDZE <b>13</b> Apt Elev <b>14</b>	<b>6869</b>
-------------------------------------------------------	------------------------	-------------------------------------------------	-------------

# LDA RWY 19

## RONALD REAGAN WASHINGTON NTL (DCA)

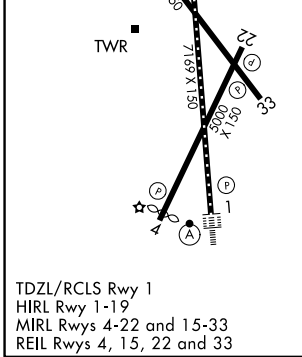
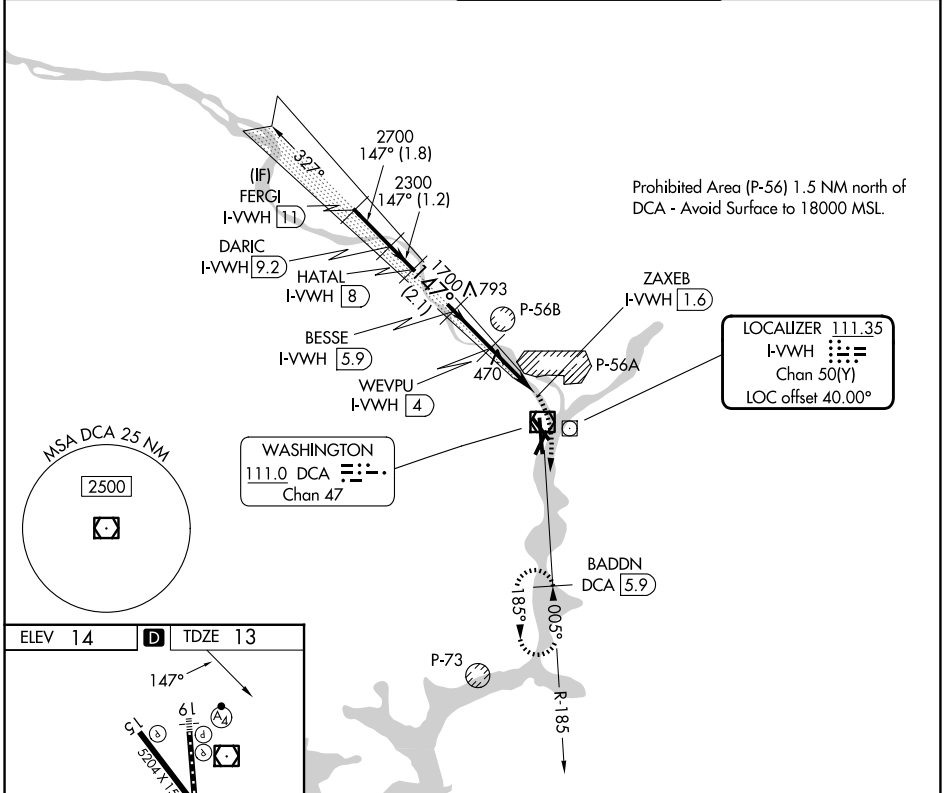
DME required. RADAR required for procedure entry.

MALSF

- ▼ Rwy 19 helicopter visibility reduction below 1 SM NA.
- ▲ Circling NA northeast of Rwy 15-33. Inop table does not apply. Circling Rwy 4 NA.

MISSED APPROACH: Climbing right turn to 3000 on DCA VOR/DME R-185 to BADDN/DCA VOR/DME 5.9 DME and hold, continue climb-in-hold to 3000.

D-ATIS <b>132.65</b>	POTOMAC APP CON <b>119.85 239.25</b> (W/S) <b>124.2 360.8</b> (E)	WASHINGTON TOWER <b>119.1 257.6</b>	GND CON <b>121.7 257.6</b>
-------------------------	-------------------------------------------------------------------------	----------------------------------------	-------------------------------



	FERGI I-VVWH (11)	DARIC I-VVWH (9.2)	HATAL I-VVWH (8)	BESSE I-VVWH (5.9)	WEVPU I-VVWH (4)	ZAXEB I-VVWH (1.6)	3000	BADDN DCA (5.9)
	1.8 NM						0.9 NM	
CATEGORY	A	B	C	D				
S-19	780/50 767 (800-1)	780/55 767 (800-1)	780-2½	767 (800-2½)				
CIRCLING	780-1 766 (800-1)	780-1¼ 766 (800-1¼)	840-2½	900-3				

# LDA RWY 19

NE-3, 14 MAY 2026 to 11 JUN 2026

NE-3, 14 MAY 2026 to 11 JUN 2026