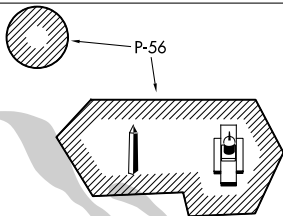


# MOUNT VERNON VISUAL RUNWAY 1

AL-443 (FAA)

WASHINGTON, DC

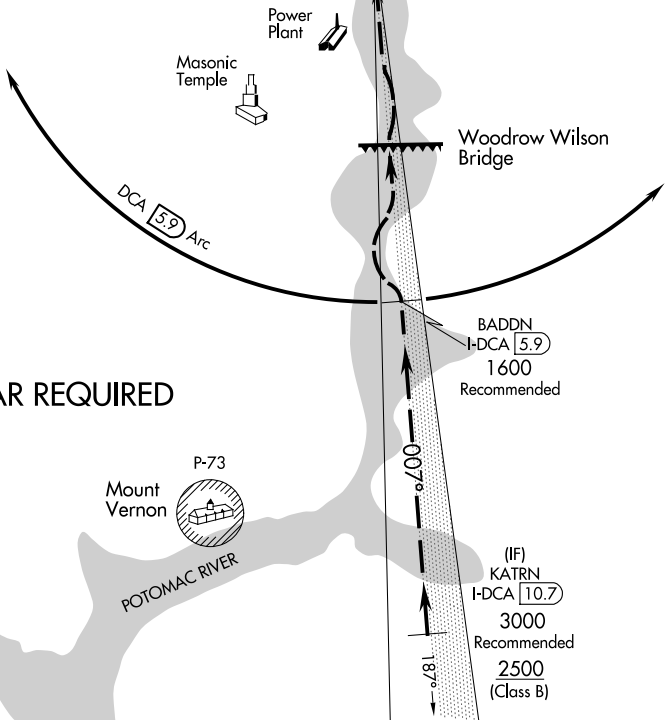
D-ATIS 132.65  
 POTOMAC APP CON  
 119.85 239.25 (WEST/SOUTH)  
 124.2 360.8 (EAST)  
 WASHINGTON TOWER  
 119.1 257.6  
 GND CON  
 121.7 257.6



LOCALIZER 109.9  
 I-DCA [Morse code] Chan 36

WASHINGTON  
 111.0 DCA [Morse code] Chan 47

NOTE: PROHIBITED AREA (P-56) 1.5 NM NORTH OF DCA-AVOID-SURFACE TO 18000 MSL.



## RADAR REQUIRED

NE-3, 14 MAY 2026 to 11 JUN 2026

NE-3, 14 MAY 2026 to 11 JUN 2026

|      |   |   |   |   |   |   |   |   |    |    |    |    |
|------|---|---|---|---|---|---|---|---|----|----|----|----|
| 1 NM | 2 | 3 | 4 | 5 | 6 | 7 | 8 | 9 | 10 | 11 | 12 | 13 |
|------|---|---|---|---|---|---|---|---|----|----|----|----|

Aircraft may proceed via DCA VOR/DME R-185 (inbound 005°), or via the ILS or LOC RWY 1 approach to 5.9 DME, then follow the Potomac River to the airport.

# MOUNT VERNON VISUAL RUNWAY 1

38°51'N-77°02'W

WASHINGTON, DC

Amdt 4A 14MAY26

RONALD REAGAN WASHINGTON NTL (DCA)