

# NUMMY THREE ARRIVAL

WASHINGTON, DC

NE-3, 14 MAY 2026 to 11 JUN 2026

## ARRIVAL ROUTE DESCRIPTION

**BUCKO TRANSITION (BUCKO.NUMMY3):** From over BUCKO on ESL R-282 to ESL VOR/DME, then on ESL R-103 to DRUZZ, then on AML R-297 to AML VOR/DME.

**Landing DCA Rwy 1, 4, 33, ADW Rwys 1L, 1R, and DAA:** From over AML VOR/DME on AML VOR/DME R-130 to cross NUMMY at 6000, then on heading 187°, expect radar vectors to final approach course.

**Landing DCA Rwys 15, 19, 22 and ADW Rwys 19L, 19R:** Depart AML VOR/DME on heading 070°, expect radar vectors to final approach course.

POTOMAC APP CON  
118.675 323.175  
DCA D-ATIS 132.65  
KADW D-ATIS  
133.675 251.05  
\*KDAA ATIS  
128.175

MORGANTOWN  
111.6 MGW  
Chan 53

KESSEL  
110.8 ESL  
Chan 45  
FL230

MARTINSBURG  
112.1 MRB  
Chan 58

ARMEL  
113.5 AML  
Chan 82

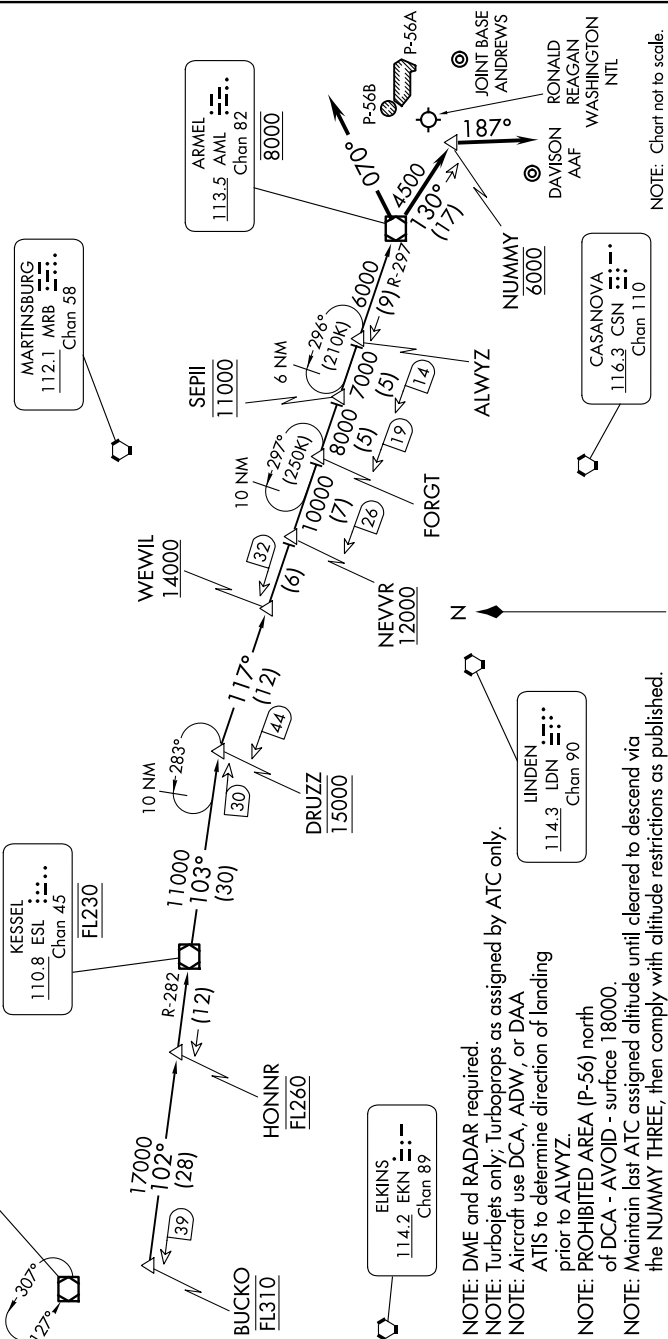
CASANOVA  
116.3 CSN  
Chan 110

# NUMMY THREE ARRIVAL

(AML.NUMMY3) 20JUN19

WASHINGTON, DC

NE-3, 14 MAY 2026 to 11 JUN 2026



NOTE: DME and RADAR required.  
 NOTE: Turboprops only; Turboprops as assigned by ATC only.  
 NOTE: Aircraft use DCA, ADW, or DAA  
 ATIS to determine direction of landing prior to ALWYZ.  
 NOTE: PROHIBITED AREA (P-56) north of DCA - AVOID - surface 18000.  
 NOTE: Maintain last ATC assigned altitude until cleared to descend via the NUMMY THREE, then comply with altitude restrictions as published.

NOTE: Chart not to scale.