

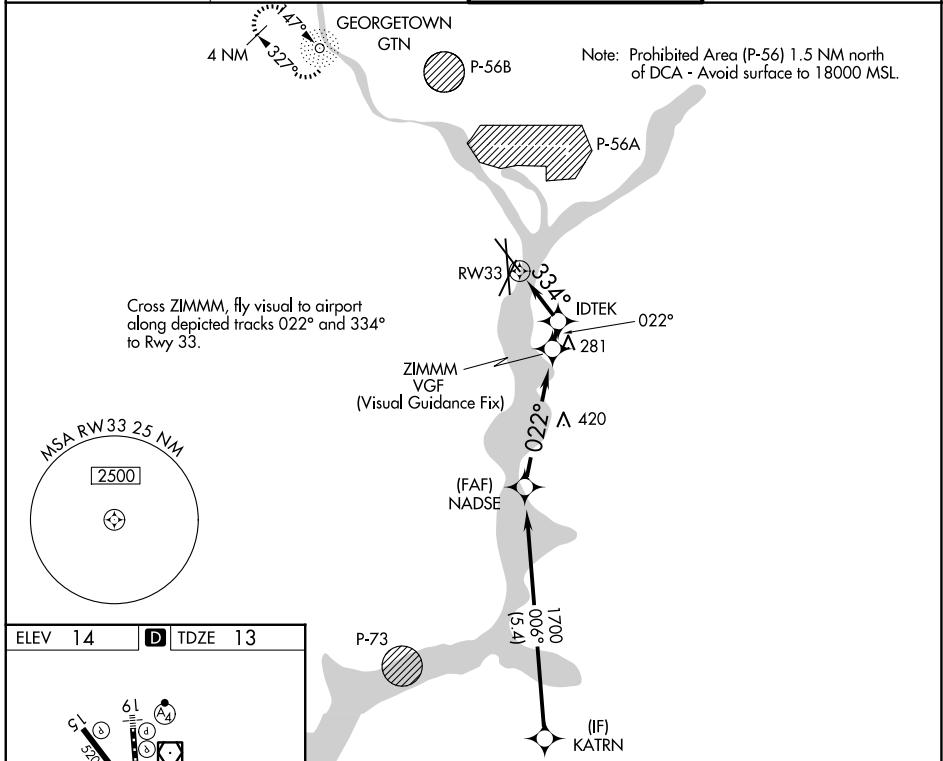
APP CRS 334°	Rwy Ldg TDZE Apt Elev	5204 13 14
------------------------	-----------------------------	---------------------------------------

RNAV (GPS) RWY 33

RONALD REAGAN WASHINGTON NTL (DCA)

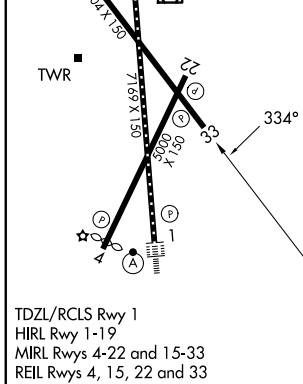
RNP APCH - GPS. RADAR required.	MISSED APPROACH: (Do not exceed 210K until Rwy 33) Climb to 2200 on the FMS lateral path to Rwy 33 and direct to GTN NDB and hold, continue climb-in-hold to 2200.
⚠ Helicopter visibility reduction is not authorized.	

D-ATIS 132.65	POTOMAC APP CON 119.85 239.25 (W/S) 124.2 360.8 (E)	WASHINGTON TOWER 119.1 257.6	GND CON 121.7 257.6
-------------------------	---	--	-------------------------------



NE-3, 14 MAY 2026 to 11 JUN 2026

NE-3, 14 MAY 2026 to 11 JUN 2026



ELEV 14	D	TDZE 13		
2200	GTN	VGSI and descent angles not coincident (VGSi Angle 3.00/TCH 37).		
Turn required from VGf to RWY 33.				
* Recommended altitude.				
RWY 33	IDTEK	ZIMMZ		
	* 500	* 700		
		NADSE		
		≤ 3.10° TCH 40		
		KATRN		
		1700		
		006°		
		3000		
	1.4 NM	0.6 NM	3 NM	5.4 NM
CATEGORY	A	B	C	D
LNAV MDA	700-2½ 687 (700-2½)			