

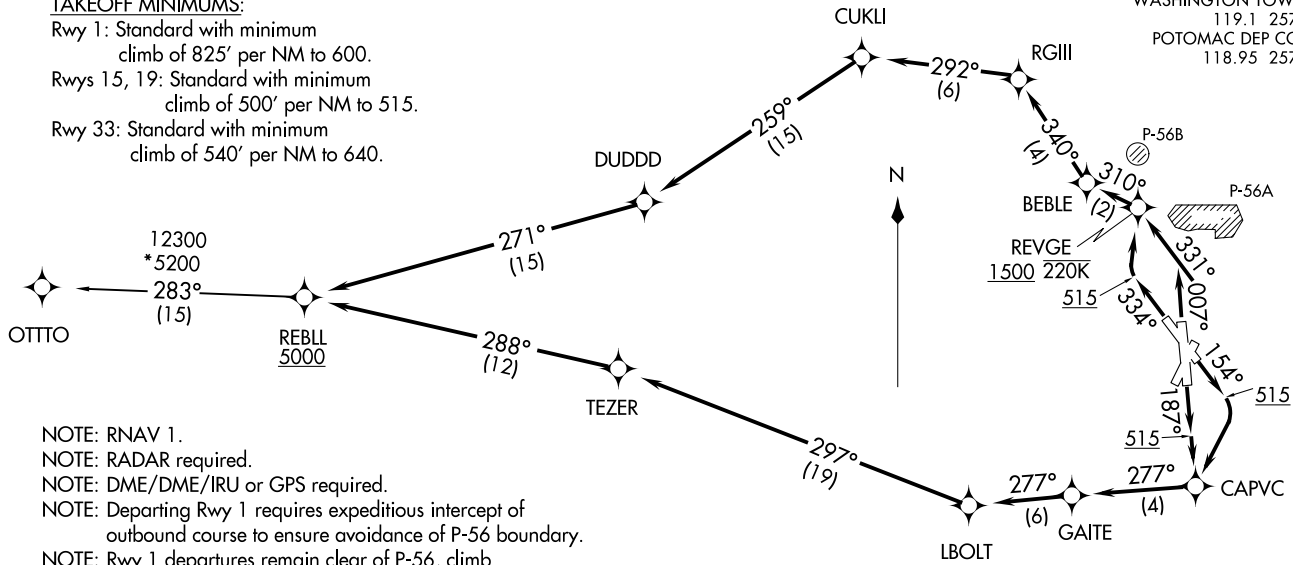
REBL FIVE DEPARTURE (RNAV)
 (REBL5, REBL) 31 DEC 20

WASHINGTON, DC
 RONALD REAGAN WASHINGTON NTL (DCA)

**TOP ALTITUDE:
 5000**

TAKEOFF MINIMUMS:

Rwy 1: Standard with minimum climb of 825' per NM to 600.
 Rws 15, 19: Standard with minimum climb of 500' per NM to 515.
 Rwy 33: Standard with minimum climb of 540' per NM to 640.



- NOTE: RNAV 1.
- NOTE: RADAR required.
- NOTE: DME/DME/IRU or GPS required.
- NOTE: Departing Rwy 1 requires expeditious intercept of outbound course to ensure avoidance of P-56 boundary.
- NOTE: Rwy 1 departures remain clear of P-56, climb heading 007°, turn left as soon as practical to intercept course 331° to REVGE.
- NOTE: Pilots shall comply with Ronald Reagan Washington Ntl Airport noise abatement and prohibited area (P-56) avoidance procedures as defined in the Chart Supplement Special Notices.
- NOTE: Turbo-jets only.

(NARRATIVE ON FOLLOWING PAGE)

NOTE: Chart not to scale.

(REBL5, REBL) 21112
 REBL FIVE DEPARTURE (RNAV)

AL-43 (FAA)

WASHINGTON, DC
 RONALD REAGAN WASHINGTON NTL (DCA)



DEPARTURE ROUTE DESCRIPTION

TAKEOFF RUNWAY 1: Climb on heading 007° to intercept course 331° to REVGE, cross REVGE at or above 1500 and at or below 220K, then on track 310° to BEBLE, then on track 340° to RGIII, then on track 292° to CUKLI, then on track 259° to DUDDD, then on track 271° to REBLL, cross REBLL at or above 5000, thence....

TAKEOFF RUNWAY 15: Climb on heading 154° to 515, then right turn direct CAPVC, then on track 277° to GAITE, then on track 268 to LBOLT, then on track 297° to TEZER, then on track 288° to REBLL, cross REBLL at or above 5000, thence....

TAKEOFF RUNWAY 19: Climb on heading 187° to 515, then direct CAPVC, then on track 277° to GAITE, then on track 277° to LBOLT, then on track 297° to TEZER, then on track 288° to REBLL, cross REBLL at or above 5000, thence....

TAKEOFF RUNWAY 33: Climb on heading 334° to 515, then direct REVGE, cross REVGE at or above 1500 and at or below 220K, then on track 310° to BEBLE, then on track 340° to RGIII, then on track 292° to CUKLI, then on track 259° to DUDDD, then on track 271° to REBLL, cross REBLL at or above 5000, thence....

....on OTTO transition. Maintain 5000. Expect filed altitude within ten (10) minutes after departure.

OTTO TRANSITION (REBLL5.OTTO):

NE-3, 14 MAY 2026 to 11 JUN 2026

NE-3, 14 MAY 2026 to 11 JUN 2026