

RIVER VISUAL RWY 19

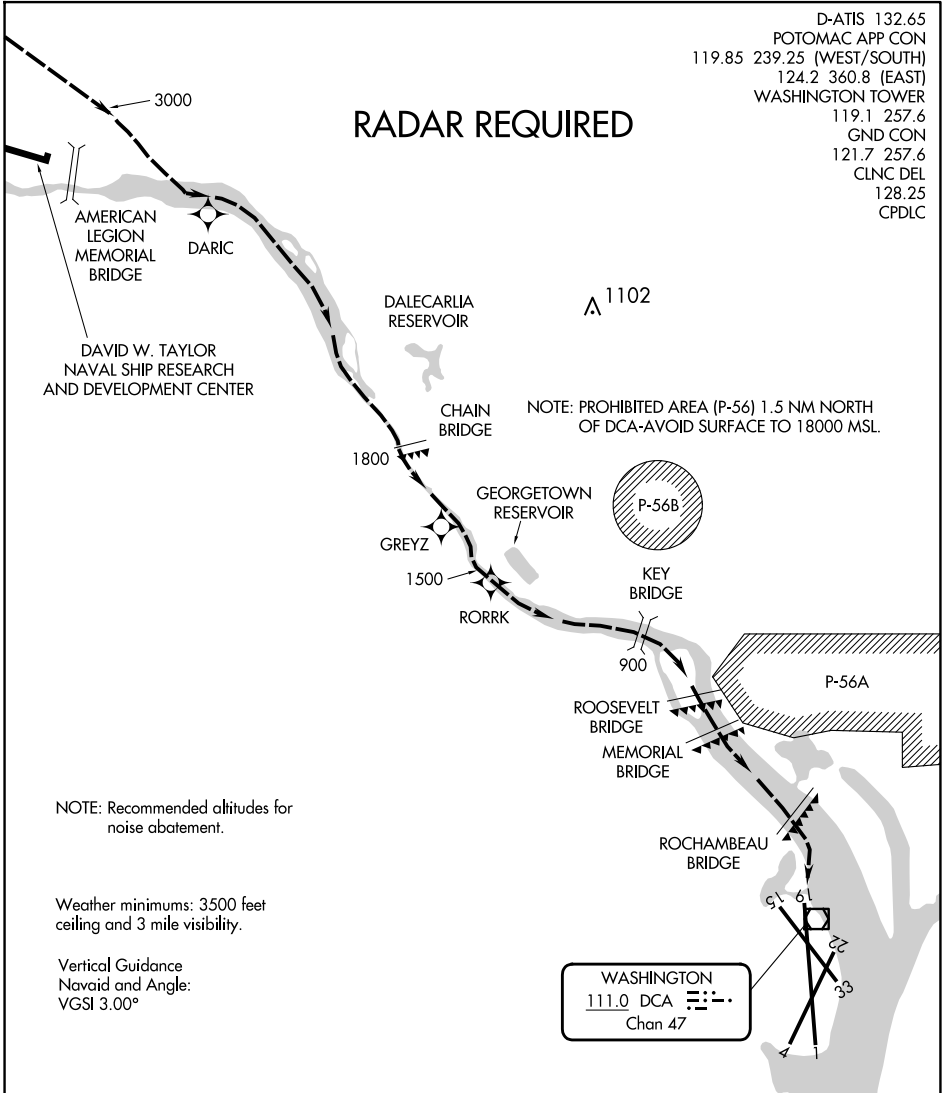
RONALD REAGAN WASHINGTON NTL (DCA)

AL-443 (FAA)

WASHINGTON, DC

D-ATIS 132.65
 POTOMAC APP CON
 119.85 239.25 (WEST/SOUTH)
 124.2 360.8 (EAST)
 WASHINGTON TOWER
 119.1 257.6
 GND CON
 121.7 257.6
 CLNC DEL
 128.25
 CPDLC

RADAR REQUIRED



NOTE: Recommended altitudes for noise abatement.

Weather minimums: 3500 feet ceiling and 3 mile visibility.

Vertical Guidance
Navaid and Angle:
VGS1 3.00°

WASHINGTON
 111.0 DCA Chan 47

NE-3, 14 MAY 2026 to 11 JUN 2026

NE-3, 14 MAY 2026 to 11 JUN 2026

1 NM	2	3	4	5	6	7	8
------	---	---	---	---	---	---	---

RIVER VISUAL RWY 19

Aircraft may visually follow the river to the airport, or may proceed via the RNAV (GPS) Y RWY 19 to RORRK, or via the RNAV (RNP) Z RWY 19 to GREYZ, then follow the river to the airport.

NOTE: Clearance for visual approach does not authorize penetration of P-56.

RIVER VISUAL RWY 19

38°51'N-77°02'W

WASHINGTON, DC