

(SHILO.SKILS5) 23222

SKILS FIVE ARRIVAL (RNAV)

RONALD REAGAN WASHINGTON NTL (DCA)
AL-443 (FAA) WASHINGTON, DC

POTOMAC APP CON
128.7 307.9
D-ATIS
132.65

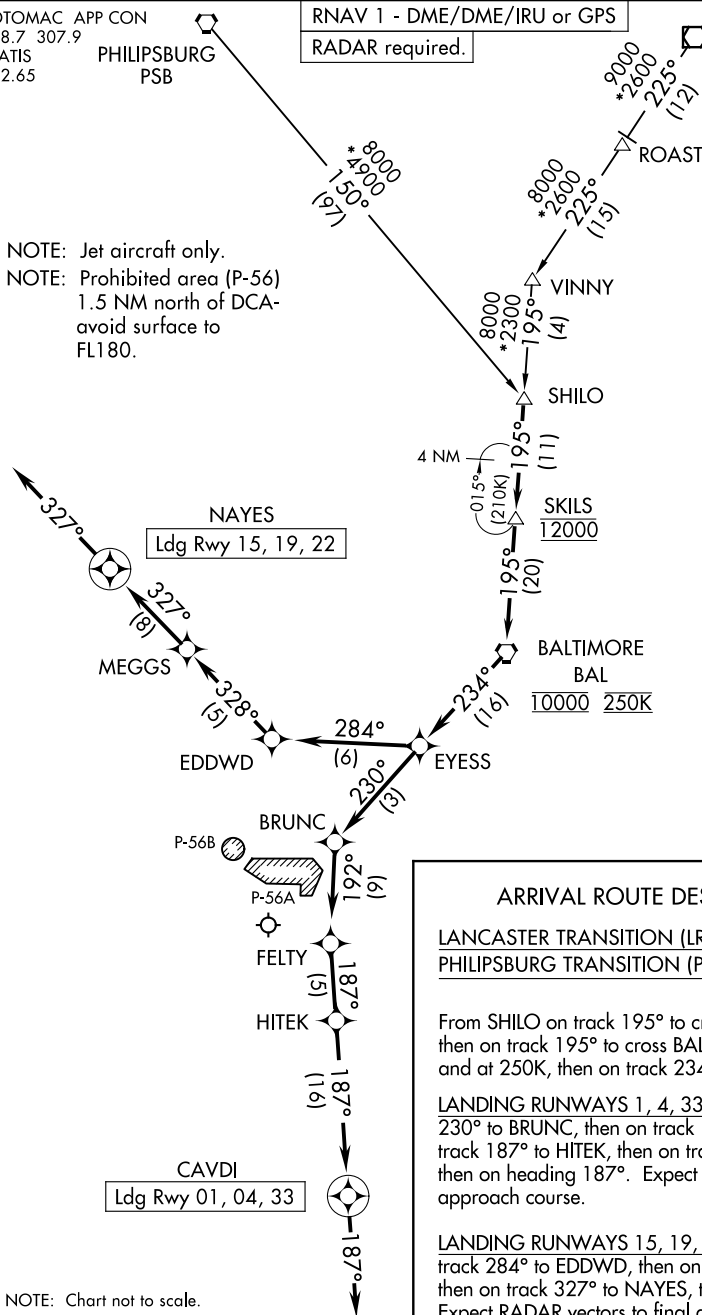
PHILIPSBURG
PSB

RNAV 1 - DME/DME/IRU or GPS

RADAR required.

LANCASTER
LRP

NOTE: Jet aircraft only.
NOTE: Prohibited area (P-56)
1.5 NM north of DCA-
avoid surface to
FL180.



ARRIVAL ROUTE DESCRIPTION

LANCASTER TRANSITION (LRP.SKILS5):
PHILIPSBURG TRANSITION (PSB.SKILS5):

From SHILO on track 195° to cross SKILS, at 12000, then on track 195° to cross BAL VORTAC, at 10000 and at 250K, then on track 234° to EYESS.

LANDING RUNWAYS 1, 4, 33: From EYESS on track 230° to BRUNC, then on track 192° to FELTY, then on track 187° to HITEK, then on track 187° to CAVDI, then on heading 187°. Expect RADAR vectors to final approach course.

LANDING RUNWAYS 15, 19, 22: From EYESS on track 284° to EDDWD, then on track 328° to MEGGS, then on track 327° to NAYES, then on heading 327°. Expect RADAR vectors to final approach course.

NOTE: Chart not to scale.

SKILS FIVE ARRIVAL (RNAV)
(SHILO.SKILS5) 10AUG23

WASHINGTON, DC
RONALD REAGAN WASHINGTON NTL (DCA)

NE-3, 14 MAY 2026 to 11 JUN 2026

NE-3, 14 MAY 2026 to 11 JUN 2026