

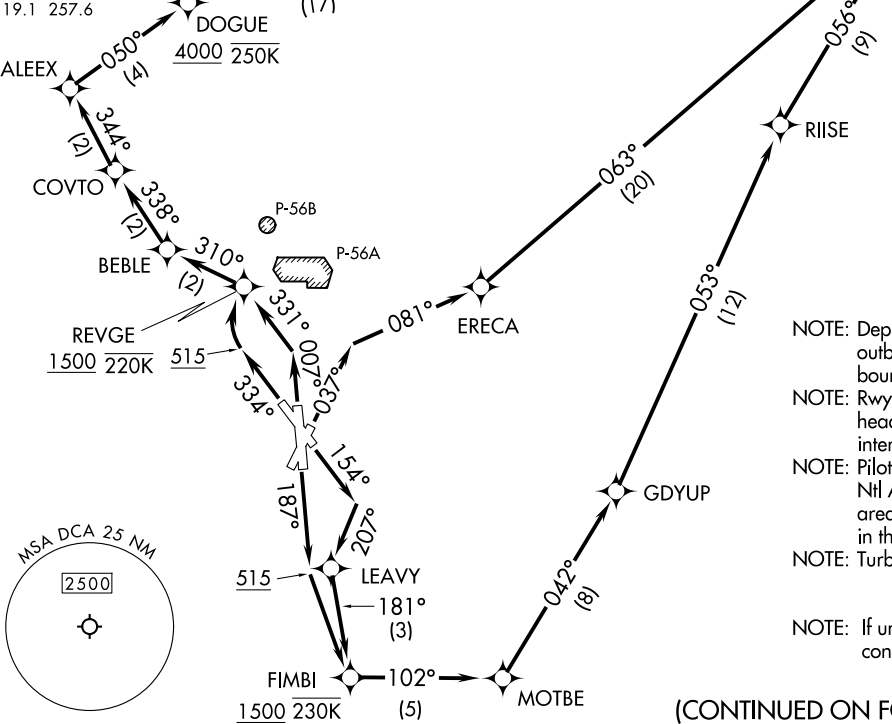
**SOOKI SIX DEPARTURE (RNAV)**  
 (SOOKI6; SOOKI) 22JAN26

WASHINGTON, DC  
 RONALD REAGAN WASHINGTON NTL (DCA)

**POTOMAC DEP CON**  
 125.65 348.725  
**D-ATIS**  
 132.65  
**CLNC DEL**  
 128.25  
**CPDLC**  
**GND CON**  
 121.7 257.6  
**WASHINGTON TOWER**  
 119.1 257.6

**RNAV 1 - DME/DME/IRU or GPS.**  
**RADAR required.**

**TOP ALTITUDE:**  
**5000**



**TAKEOFF MINIMUMS:**  
 Rwy 1: Standard with minimum climb of 825' per NM to 600.  
 Rws 4, 15, 19: Standard with minimum climb of 500' per NM to 515.  
 Rwy 33: Standard with minimum climb of 540' per NM to 640.

- NOTE: Departing Rwy 1 requires expeditious intercept of outbound course to ensure avoidance of P-56 boundary.
- NOTE: Rwy 1 departures remain clear of P-56, climb on heading 007°, turn left as practical to intercept course 331° to REVGE.
- NOTE: Pilots shall comply with Ronald Reagan Washington Ntl Airport noise abatement and prohibited area (P-56) avoidance procedures as defined in the Chart Supplement Special Notices.
- NOTE: Turbojet only.
- NOTE: If unable to accept climb rate, advise ATC on initial contact.

(CONTINUED ON FOLLOWING PAGE) NOTE: Chart not to scale.

**SOOKI SIX DEPARTURE (RNAV)**  
 (SOOKI6; SOOKI) 26022

WASHINGTON, DC  
 RONALD REAGAN WASHINGTON NTL (DCA)  
 AL-443 (FAA)



DEPARTURE ROUTE DESCRIPTION

TAKEOFF RUNWAY 1: Climb on heading 007° to intercept course 331° to REVGE, cross REVGE at or above 1500 and at or below 220K, then on track 310° to BEBLE, then on track 338° to COVTO, then on track 344° to ALEEX, then on track 050° to DOGUE, cross DOGUE at or above 4000 and at or below 250K, then on track 092° to PHERB, then on track 091° to SOOKI, cross SOOKI at or above 5000, thence....

TAKEOFF RUNWAY 4: Climb on heading 037° to intercept course 081° to ERECA, then on track 063° to SOOKI, cross SOOKI at or above 5000, thence....

TAKEOFF RUNWAY 15: Climb on heading 154° to intercept course 207° to LEAVY, then on track 181° to FIMBI, cross FIMBI at or above 1500 and at or below 230K, then on track 102° to MOTBE, then on track 042° to GDYUP, then on track 053° to RIISE, then on track 056° to SOOKI, cross SOOKI at or above 5000, thence....

TAKEOFF RUNWAY 19: Climb on heading 187° to 515, then direct FIMBI, cross FIMBI at or above 1500 and at or below 230K, then on track 102° to MOTBE, then on track 042° to GDYUP, then on track 053° to RIISE, then on track 056° to SOOKI, cross SOOKI at or above 5000, thence....

TAKEOFF RUNWAY 33: Climb on heading 334° to 515, then direct REVGE, cross REVGE at or above 1500 and at or below 220K, then on track 310° to BEBLE, then on track 338° to COVTO, then on track 344° to ALEEX, then on track 050° to DOGUE, cross DOGUE at or above 4000 and at or below 250K, then on track 092° to PHERB, then on track 091° to SOOKI, cross SOOKI at or above 5000, thence....

...on SWANN transition. Maintain 5000. Expect filed altitude 10 minutes after departure.

SWANN TRANSITION (SOOKI6.SWANN)

NE-3, 14 MAY 2026 to 11 JUN 2026

NE-3, 14 MAY 2026 to 11 JUN 2026