

RNAV 1 - DME/DME/IRU or GPS.
RADAR required.

See following page for arrival routes.
TRUPS
11000 250K

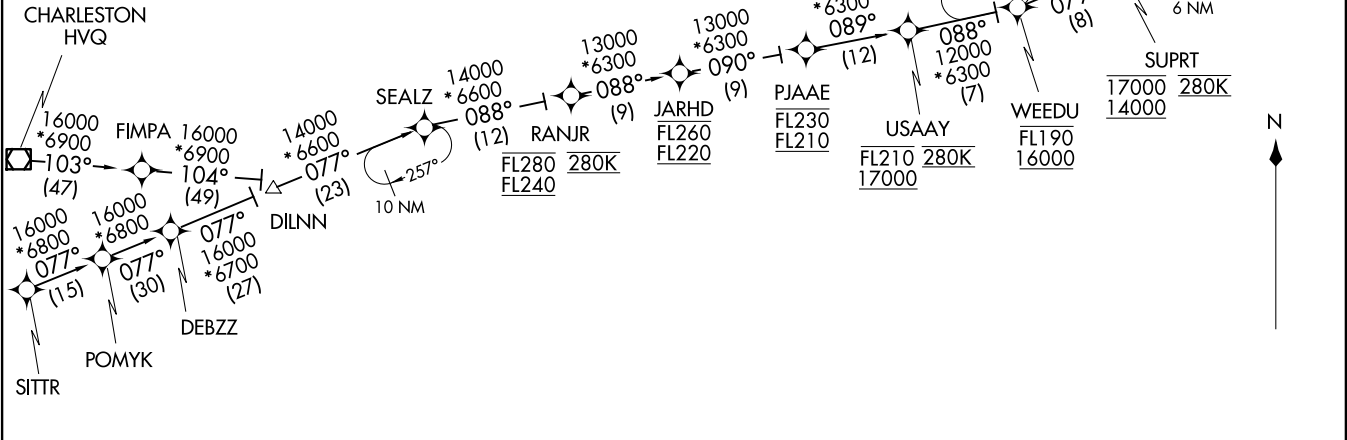
- NOTE: Jet aircraft only.
- NOTE: Turboprops as assigned by ATC only.
- NOTE: PROHIBITED AREA (P-56) 1.5 NM north of KDCA - AVOID - surface to FL180.
- NOTE: Landing south at DCA use Runway 19 transition, landing north use Runway 1 transition.
- Landing south at ADW use Runway 19R transition, landing north use Runway 1L transition.
- Expect runway assignment from TRACON 10 miles prior to TRUPS.

POTOMAC APP CON
118.675 323.175
DCA D-ATIS
132.65
ADW D-ATIS
133.675 251.05
DAA ATIS ★
128.175

TRUPS FIVE ARRIVAL (RNAV) Transition Routes
(TRUPS, TRUPS5) 16MAY24

TRUPS FIVE ARRIVAL (RNAV) Transition Routes

WASHINGTON, DC



(TRUPS, TRUPS5) 25051

AL-443 (FAA)

WASHINGTON, DC

CHARLESTON TRANSITION (HVQ, TRUPS5):
SITTR TRANSITION (SITTR, TRUPS5):

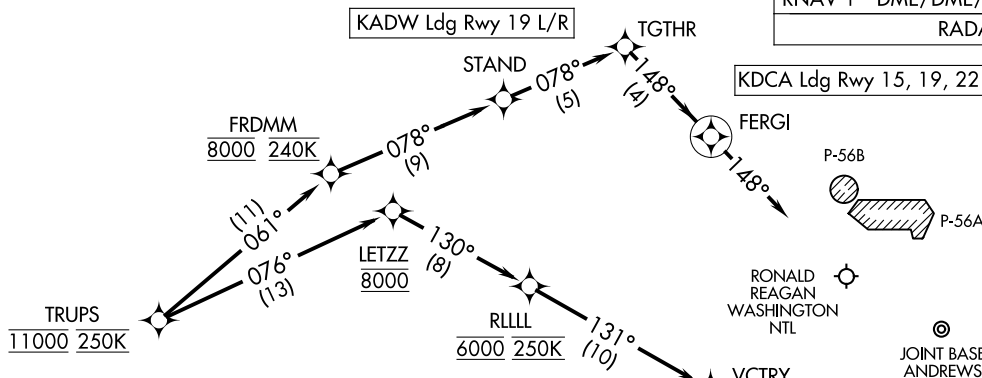
(CONTINUED ON FOLLOWING PAGE)

NOTE: Chart not to scale.

TRUPS FIVE ARRIVAL (RNAV) Arrival Routes
(TRUPS, TRUPS5) 16MAY24

POTOMAC APP CON
118.675 323.175
DCA D-ATIS
132.65
ADW D-ATIS
133.675 251.05
DAA ATIS ★
128.175

RNAV 1 - DME/DME/IRU or GPS.
RADAR required.



NOTE: Chart not to scale.

ARRIVAL ROUTE DESCRIPTION

LANDING ADW RUNWAY 1L/R: From TRUPS on track 076° to cross LETZZ at 8000, then on track 130° to cross RLLLL at 6000 and at 250K, then on track 131° to VCTRY, then on track 189° to HEROO, then on track 189°. Expect RADAR vectors to final approach course.

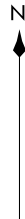
LANDING ADW RUNWAY 19L/R: From TRUPS on track 061° to cross FRDMM at 8000 and at 240K, then on track 078° to STAND. Expect RADAR vectors to final approach course.

LANDING DCA RUNWAY 1, 4, 33: From TRUPS on track 076° to cross LETZZ at 8000, then on track 130° to cross RLLLL at 6000 and at 250K, then on track 131° to VCTRY, then on track 189° to HEROO, then on track 189°. Expect RADAR vectors to final approach course.

LANDING DCA RUNWAY 15, 19, 22: From TRUPS on track 061° to cross FRDMM at 8000 and at 240K, then on track 078° to STAND, then on track 078° to TGTHR, then on track 148° to FERG1, then on track 148°. Expect RADAR vectors to final approach course.

LANDING DAA: From TRUPS on track 076° to cross LETZZ at 8000, then on track 130° to cross RLLLL at 6000 and at 250K, then on track 131° to VCTRY, then on track 189° to HEROO, then on track 189°. Expect RADAR vectors to final approach course.

NOTE: Jet aircraft only.
NOTE: Turboprops as assigned by ATC only.
NOTE: PROHIBITED AREA (P-56) 1.5 NM north of KDCA - AVOID - surface to FL180.
NOTE: Landing south at DCA use Runway 19 transition, landing north use Runway 1 transition. Landing south at ADW use Runway 19R transition, landing north use Runway 1L transition. Expect runway assignment from TRACON 10 miles prior to TRUPS.



TRUPS, TRUPS5) 24137
TRUPS FIVE ARRIVAL (RNAV) Arrival Routes

AL-443 (FAA)

WASHINGTON, DC

WASHINGTON, DC