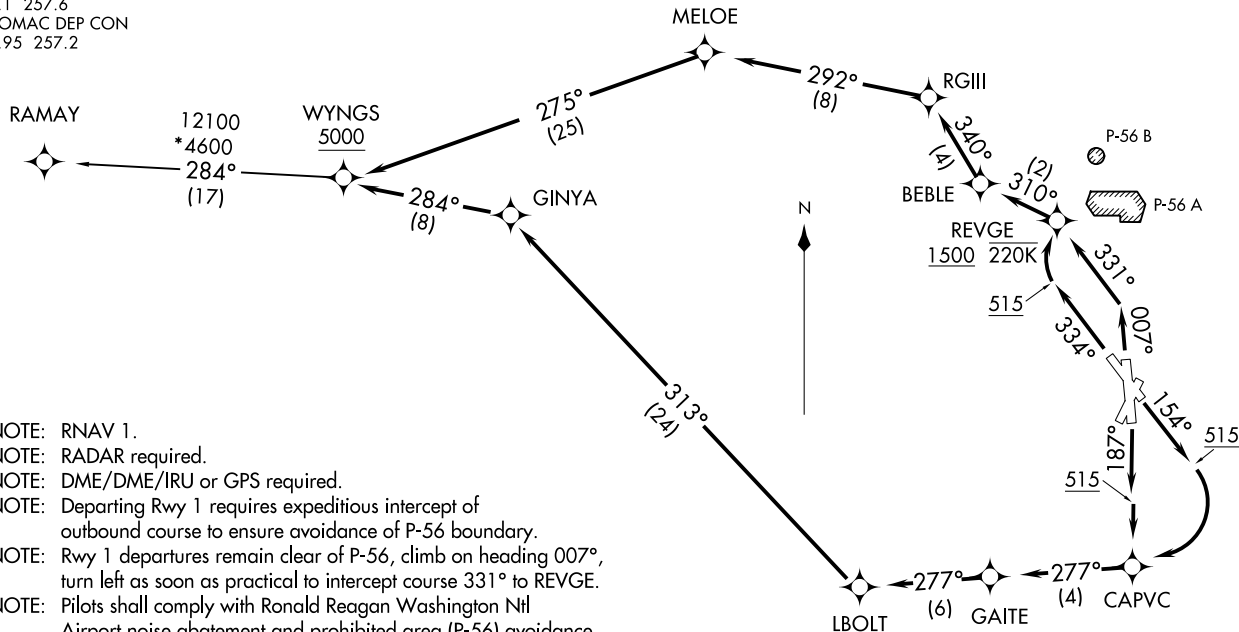


**TOP ALTITUDE:
5000**

TAKEOFF MINIMUMS:

- Rwy 1: Standard with minimum climb of 825' per NM to 600.
- Rwys 15, 19: Standard with minimum climb of 500' per NM to 515.
- Rwy 33: Standard with minimum climb of 540' per NM to 640.

D-ATIS
132.65
CLNC DEL
128.25
CPDLC
GND CON
121.7 257.6
WASHINGTON TOWER
119.1 257.6
POTOMAC DEP CON
118.95 257.2



- NOTE: RNAV 1.
 NOTE: RADAR required.
 NOTE: DME/DME/IRU or GPS required.
 NOTE: Departing Rwy 1 requires expeditious intercept of outbound course to ensure avoidance of P-56 boundary.
 NOTE: Rwy 1 departures remain clear of P-56, climb on heading 007°, turn left as soon as practical to intercept course 331° to REVGE.
 NOTE: Pilots shall comply with Ronald Reagan Washington Ntl Airport noise abatement and prohibited area (P-56) avoidance procedures as defined in the Chart Supplement Special Notices.
 NOTE: Turbo-jets only.
 NOTE: If unable to accept climb rate advise ATC on initial contact.

(NARRATIVE ON FOLLOWING PAGE)

NOTE: Chart not to scale.

WYNGS FIVE DEPARTURE (RNAV)
(WYNGS5.WYNGS) 31DEC20

WASHINGTON, DC
RONALD REAGAN WASHINGTON NTL (DCA)

(WYNGS5.WYNGS) 21112
WYNGS FIVE DEPARTURE (RNAV)

A-443 (FAA)

WASHINGTON, DC
RONALD REAGAN WASHINGTON NTL (DCA)



DEPARTURE ROUTE DESCRIPTION

TAKEOFF RUNWAY 1: Climb on heading 007° to intercept course 331° to REVGE, cross REVGE at or above 1500 and at or below 220K, then on track 310° to BEBLE, then on track 340° to RGIII, then on track 292° to MELOE, then on track 275° to WYNGS, cross WYNGS at or above 5000, thence....

TAKEOFF RUNWAY 15: Climb on heading 154° to 515, then right turn direct CAPVC, then on track 277° to GAITE, then on track 277° to LBOLT, then on track 313° to GINYA, then on track 284° to WYNGS, cross WYNGS at or above 5000, thence....

TAKEOFF RUNWAY 19: Climb on heading 187° to 515, then direct CAPVC, then on track 277° to GAITE, then on track 277° to LBOLT, then on track 313° to GINYA, then on track 284° to WYNGS, cross WYNGS at or above 5000, thence....

TAKEOFF RUNWAY 33: Climb on heading 334° to 515, then direct REVGE, cross REVGE at or above 1500 and at or below 220K, then on track 310° to BEBLE, then on track 340° to RGIII, then on track 292° to MELOE, then on track 275° to WYNGS, cross WYNGS at or above 5000, thence....

....on RAMAY transition. Maintain 5000. Expect clearance to filed altitude within ten (10) minutes after departure.

RAMAY TRANSITION (WYNGS5.RAMAY)

NE-3, 14 MAY 2026 to 11 JUN 2026

NE-3, 14 MAY 2026 to 11 JUN 2026