

WAAS CH 53405 W12A	APP CRS 118°	Rwy Ldg TDZE Apt Elev	6898 1749 1749
--	------------------------	-----------------------------	---

RNAV (GPS) RWY 12

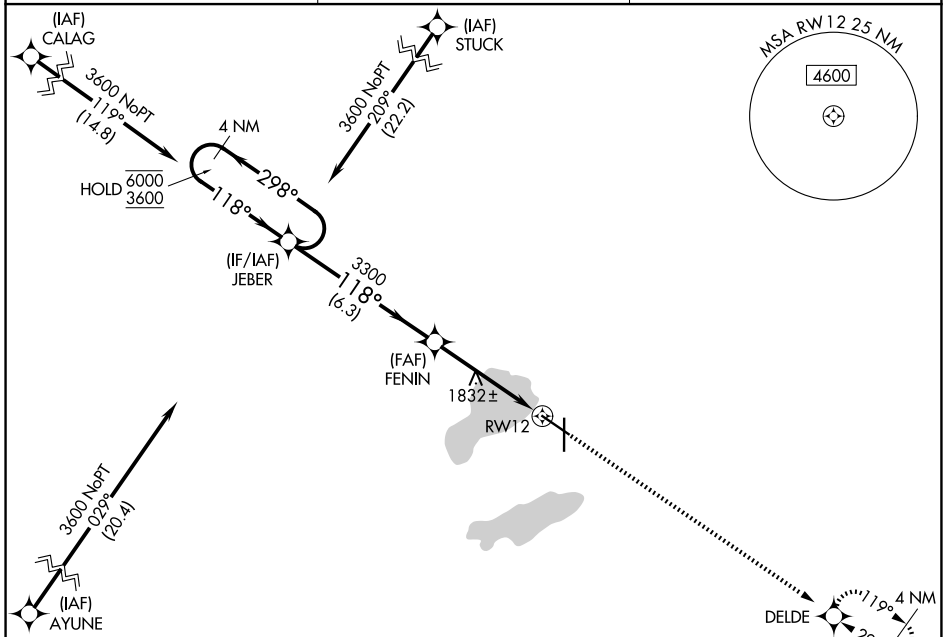
WATERTOWN RGNL (ATY)

RNP APCH - GPS.

▼ Rwy 12 helicopter visibility reduction below 3/4 SM NA.
 ▲ For uncompensated Baro-VNAV systems, LNAV/VNAV NA below -18°C or above 54°C.

MISSED APPROACH: Climb to 3600 direct DELDE and hold.

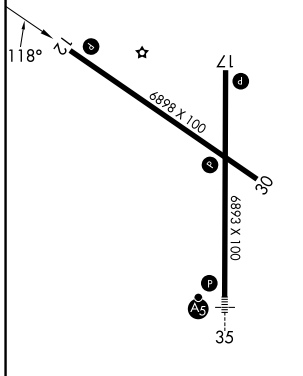
ASOS 126.625	MINNEAPOLIS CENTER 128.5 306.2	UNICOM 123.05 (CTAF) 0
------------------------	--	----------------------------------



NC-1, 14 MAY 2026 to 11 JUN 2026

NC-1, 14 MAY 2026 to 11 JUN 2026

ELEV 1749	D	TDZE 1749
-----------	----------	-----------



	4 NM Holding Pattern		JEBER	FENIN	3600	DELDE
	6000	← 298°	3600	→ 118°	3300	118°
	GP 3.00°		3300		1 NM to RWY 12	
	TCH 48		3300		RWY 12	
			6.3 NM		3.7 NM	
					1 NM	
CATEGORY	A	B	C	D		
LPV DA	2021-7/8		272 (300-7/8)			
LNAV/VNAV DA	2076-1		327 (400-1)			
LNAV MDA	2100-1		351 (400-1)			
CIRCLING	2260-1	511 (600-1)	2500-2 1/4	751 (800-2 1/4)	2500-2 1/2	751 (800-2 1/2)

REIL Rws 12, 17 and 30 **L**
 HIRL Rwy 17-35 **L**
 MIRL Rwy 12-30 **L**