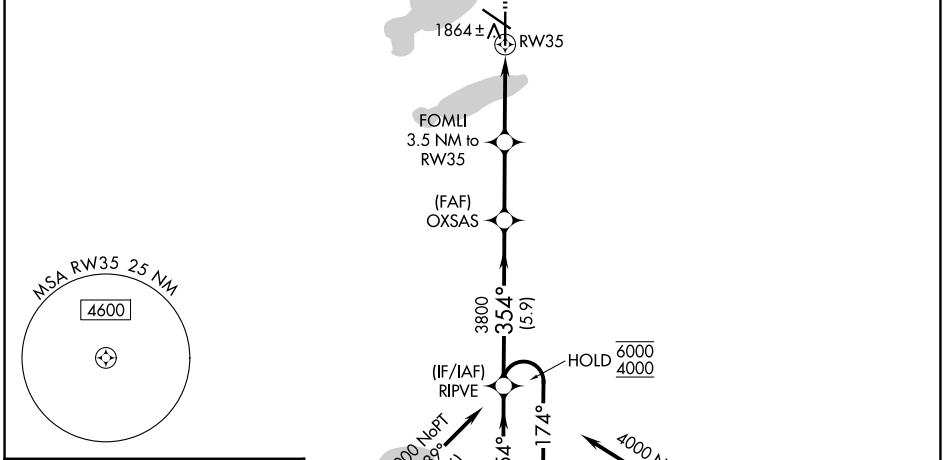
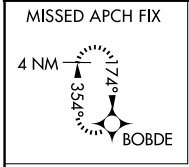


WAAS CH <b>82614</b> <b>W35A</b>	APP CRS <b>354°</b>	Rwy Ldg TDZE Apt Elev	<b>6893</b> <b>1745</b> <b>1749</b>
--	------------------------	-----------------------------	---

# RNAV (GPS) RWY 35

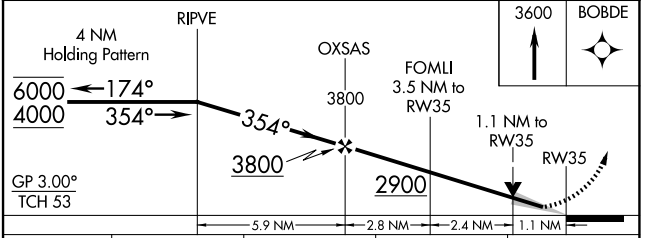
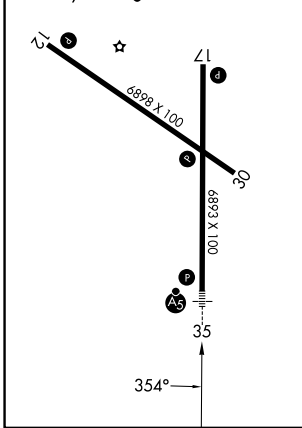
WATERTOWN RGNL (ATY)

RNP APCH - GPS.		MALSR	MISSED APPROACH: Climb to 3600 direct BOBDE and hold.
⚠ For uncompensated Baro-VNAV systems, LNAV/VNAV NA below -21°C or above 54°C. For inop ALS, increase LNAV Cat C/D visibility to 1½ SM.			
ASOS <b>126.625</b>	MINNEAPOLIS CENTER <b>128.5 306.2</b>	UNICOM <b>123.05 (CTAF) 0</b>	



ELEV 1749	<b>D</b>	TDZE 1745
-----------	----------	-----------

REIL Rwys 12, 17 and 30  
 HIRL Rwy 17-35  
 MIRL Rwy 12-30



CATEGORY	A	B	C	D
LPV DA	1945-½ 200 (200-½)			
LNAV/VNAV DA	2180-¾ 435 (500-¾)			
LNAV MDA	2160-½	415 (500-½)	2160-¾	415 (500-¾)
CIRCLING	2260-1	511 (600-1)	2500-2¼ 751 (800-2¼)	2500-2½ 751 (800-2½)

NC-1, 14 MAY 2026 to 11 JUN 2026

NC-1, 14 MAY 2026 to 11 JUN 2026